



SLOANE AVENUE, LONDON, SW3  
**£1,050 PER WEEK FURNISHED**

## FANTASTIC OPPORTUNITY TO RENT IN A BRAND NEW DEVELOPMENT ON SLOANE AVENUE OFFERING FEATURES LIKE HIGHLY EFFICIENT MECHANICAL VENTILATION HEAT

### DESCRIPTION:

Fantastic opportunity to rent in a brand new development on Sloane Avenue offering features like highly efficient mechanical ventilation heat recovery systems, bike racks for residents (first come first served), under floor heating, wood floors throughout and burglar alarms.

Knightsbridge & Chelsea | 0207 589 6616 | [knightsbridge@winkworth.co.uk](mailto:knightsbridge@winkworth.co.uk)

**Winkworth**

for every step...

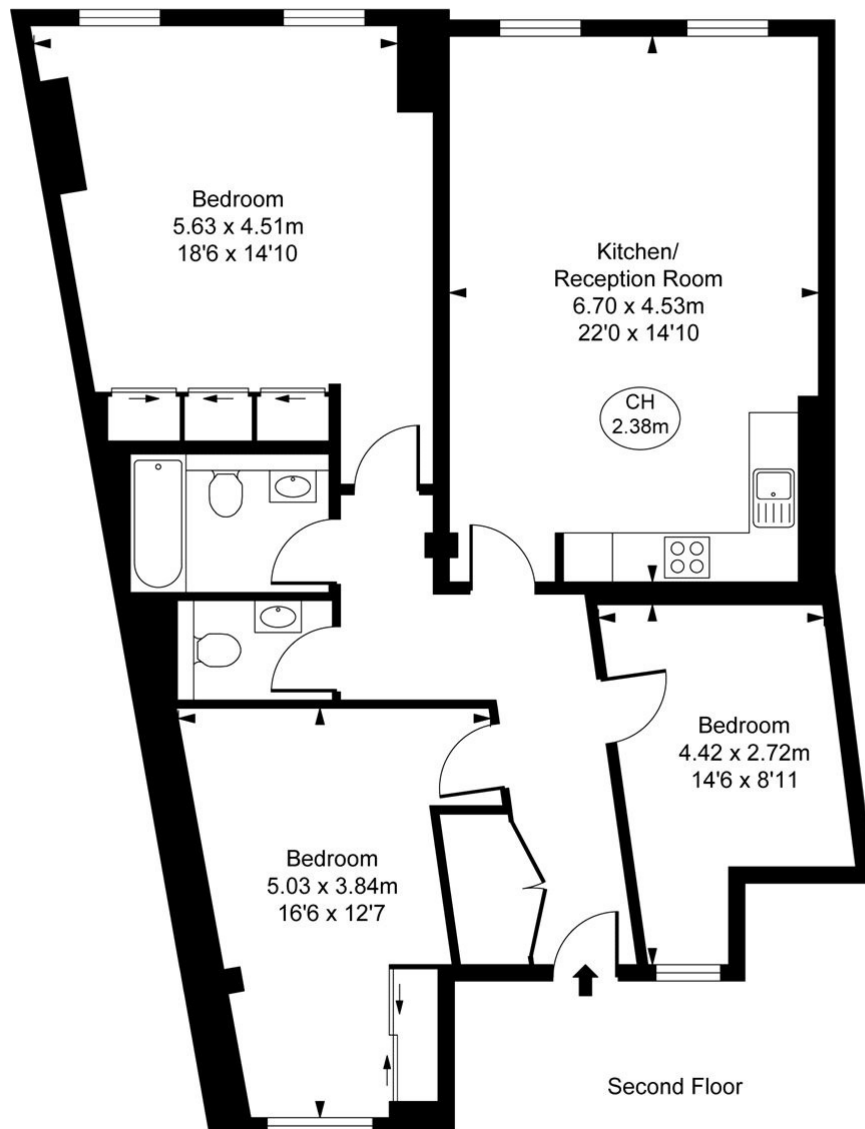
*[winkworth.co.uk](http://winkworth.co.uk)*







Sloane Avenue, SW3  
Approximate Gross Internal Area  
102.07 sq m / 1,099 sq ft  
( CH = Ceiling Heights )



This plan is not to scale. It is for guidance and not for valuation purposes.  
All measurements and areas are approximate only, and have been prepared in accordance with the current edition of the RICS Code of Measuring Practice.  
© Fulham Performance

This floorplan is for illustration purposes only and is not to scale. The position and size of doors, windows, appliances and other features are approximate.

Energy Efficiency Rating		
	Current	Potential
Very energy efficient - lower running costs		
(92-100) <b>A</b>		
(81-91) <b>B</b>		
(69-80) <b>C</b>		
(55-68) <b>D</b>	58	58
(39-54) <b>E</b>		
(21-38) <b>F</b>		
(1-20) <b>G</b>		
Not energy efficient - higher running costs		
England, Scotland & Wales EU Directive 2002/91/EC		

**Deposit: £5,250.00**

**Holding Deposit: £1,050.00**

**Council Tax Band: G**

Where no figures are shown, we have been unable to ascertain the information. All figures that are shown were correct at the time of printing.

**Winkworth**

for every step...

Knightsbridge & Chelsea | 0207 589 6616 | knightsbridge@winkworth.co.uk

[winkworth.co.uk](http://winkworth.co.uk)

Winkworth wishes to inform prospective buyers and tenants that these particulars are a guide and act as information only. All our details are given in good faith and believed to be correct at the time of printing but they don't form part of an offer or contract. No Winkworth employee has authority to make or give any representation or warranty in relation to this property. All fixtures and fittings, whether fitted or not are deemed removable by the vendor unless stated otherwise and room sizes are measured between internal wall surfaces, including furnishings.