



**THE OLD SCHOOL, GRETTON ROAD, GOTHERINGTON, CHELTENHAM, GL52  
£850,000 FREEHOLD**

## **IMMACULATELY PRESENTED FOUR BEDROOM SEMI DETACHED PERIOD PROPERTY**

Cheltenham | 01242 386586 | [cheltenham@winkworth.co.uk](mailto:cheltenham@winkworth.co.uk)

**Winkworth**

for every step...

[winkworth.co.uk](http://winkworth.co.uk)



## DESCRIPTION:

This house is a stunning example of a property providing a tranquil village lifestyle setting. Throughout this beautiful home you will find large, light and airy rooms which combined with the outbuilding, offers over 2000sq ft of well-presented accommodation.



**Winkworth**

for every step...

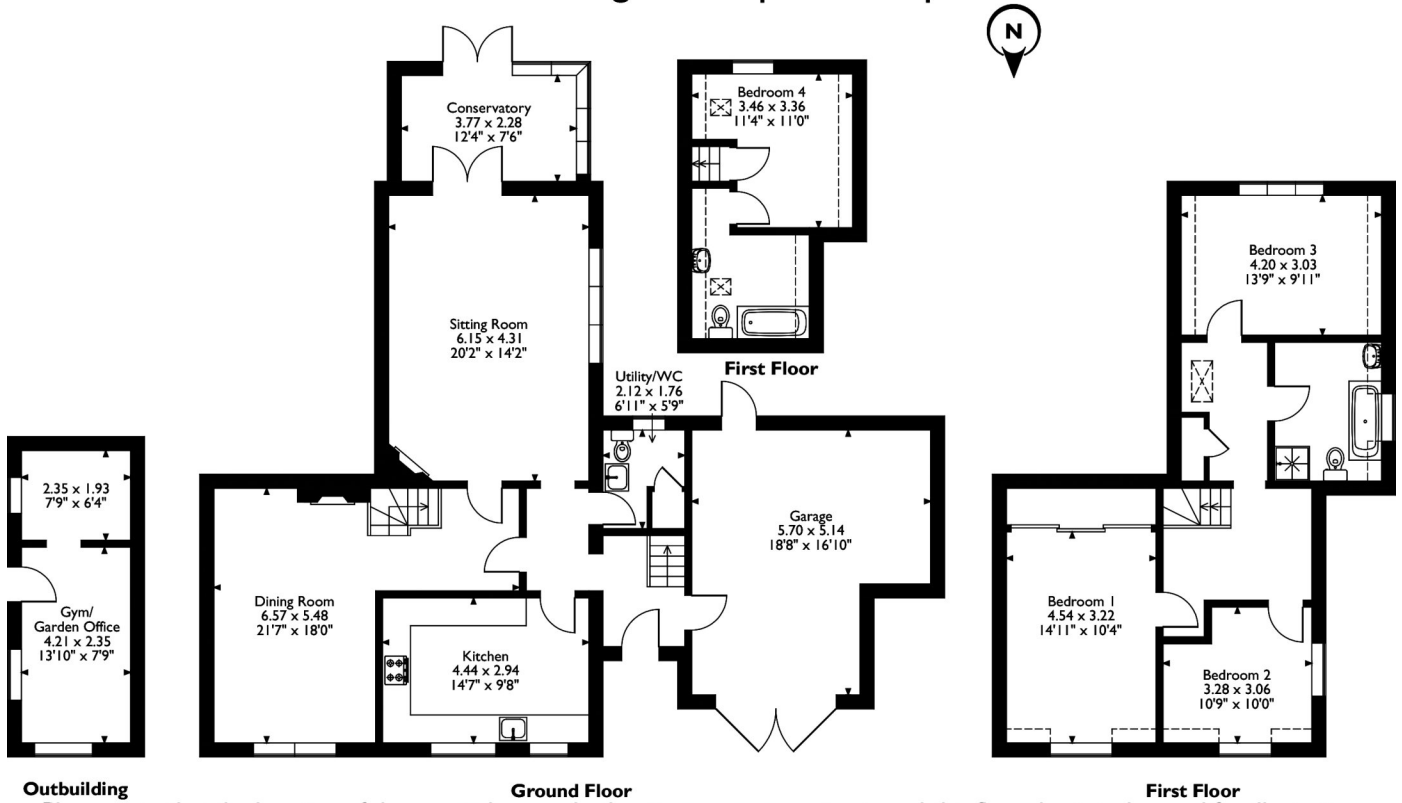


**Winkworth**

for every step...

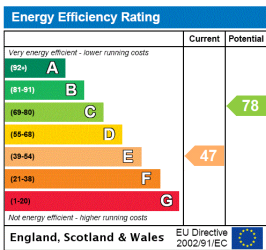
## 2 Gretton Road Gotherington, Cheltenham, Gloucestershire

Approximate Gross Internal Area  
 Main House = 197 Sq M/2120 Sq Ft  
 Outbuilding = 15 Sq M/161 Sq Ft



Please note that the location of doors, windows and other items are approximate and this floorplan is to be used for illustrative purposes only. Unauthorized reproduction is prohibited.

This floorplan is for illustration purposes only and is not to scale. The position and size of doors, windows, appliances and other features are approximate.



Cheltenham | 01242 386586 | cheltenham@winkworth.co.uk



for every step...

winkworth.co.uk

Winkworth wishes to inform prospective buyers and tenants that these particulars are a guide and act as information only. All our details are given in good faith and believed to be correct at the time of printing but they don't form part of an offer or contract. No Winkworth employee has authority to make or give any representation or warranty in relation to this property. All fixtures and fittings, whether fitted or not are deemed removable by the vendor unless stated otherwise and room sizes are measured between internal wall surfaces, including furnishings.