



FRYENT WAY, LONDON, NW9  
**£750,000 FREEHOLD**

## 4 BEDROOM SEMI DETACHED FAMILY HOME BLANK CANVAS

Kingsbury | 020 8204 0000 | [kingsbury@winkworth.co.uk](mailto:kingsbury@winkworth.co.uk)

**Winkworth**

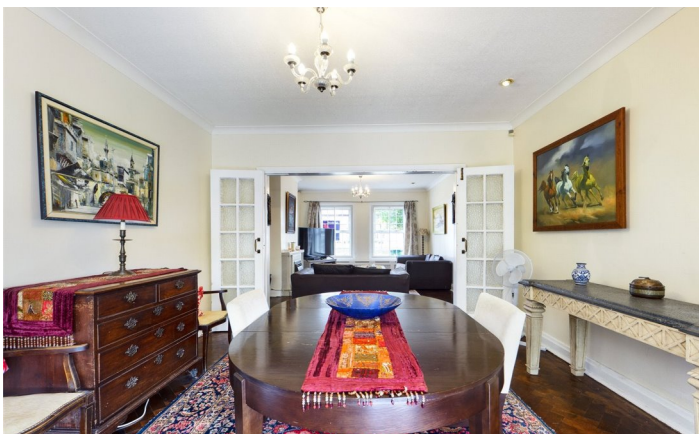
[winkworth.co.uk](http://winkworth.co.uk)

See things differently





**DESCRIPTION:** Winkworth are proud to offer as sole agents this 4 bedroom semi-detached blank canvas situated on Fryent Way, moments from the acres of scenic beauty Fryent Park has to offer. Arranged over 2 floors, the ground floor of the property comprises of an extensive, bright, and ample double reception/ dining room with adjoining conservatory allowing a warm, relaxing area allowing all round views of the garden as well as a simplistic kitchen and downstairs shower room. On the upper floor, 4 well sized bedrooms and a further family bathroom allows a fair amount of living space for a growing family as well as scope to extend into the loft and to the rear of the property (STPP). Externally, there is a generous rear garden with endless potential, and off street parking for 2 cars. This is an overall rare and beautiful opportunity for a growing family to obtain and create their forever home sitting in a desirable location just a short stroll from Kingsbury High Road and all of its amenities, Kingsbury Station (Jubilee Line) and within the catchment area for reputable local schools including JFS and Lycée International. An internal viewing is recommended.



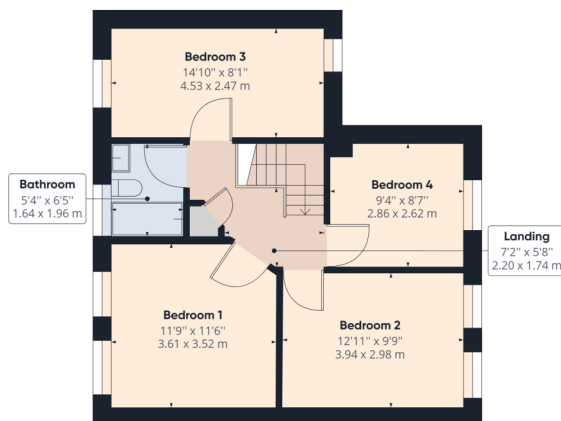
**Winkworth**







Ground Floor Building 1



Floor 1 Building 1

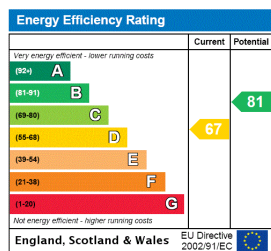
Approximate total area<sup>(1)</sup>  
1373.73 ft<sup>2</sup>  
127.62 m<sup>2</sup>

(1) Excluding balconies and terraces

While every attempt has been made to ensure accuracy, all measurements are approximate, not to scale. This floor plan is for illustrative purposes only.

GIRAFFE360

This floorplan is for illustration purposes only and is not to scale. The position and size of doors, windows, appliances and other features are approximate.



Kingsbury | 020 8204 0000 | kingsbury@winkworth.co.uk

Winkworth

winkworth.co.uk

See things differently

Winkworth wishes to inform prospective buyers and tenants that these particulars are a guide and act as information only. All our details are given in good faith and believed to be correct at the time of printing but they don't form part of an offer or contract. No Winkworth employee has authority to make or give any representation or warranty in relation to this property. All fixtures and fittings, whether fitted or not are deemed removable by the vendor unless stated otherwise and room sizes are measured between internal wall surfaces, including furnishings.