



## PEMBRIDGE PLACE, W2

**£565 PER WEEK (£2,448.33 PCM) Furnished**

**A RARE OPPORTUNITY TO RENT THIS VERY CHARMING TOP FLOOR ONE BEDROOM FLAT WITH A PRIVATE ROOF TERRACE ON ONE OF THE AREAS MOST SOUGHT AFTER LOCATIONS.**

Long Let, 1 Bedroom, 1 Reception Room, 1 Bathroom, Flat/Apartment, Upper Floor without Lift, Furnished, 462 Approx Sq Ft

**Winkworth**

Notting Hill | 0207 727 3227 | [nottinghill@winkworth.co.uk](mailto:nottinghill@winkworth.co.uk)

[winkworth.co.uk](http://winkworth.co.uk)

for every step...



### DESCRIPTION:

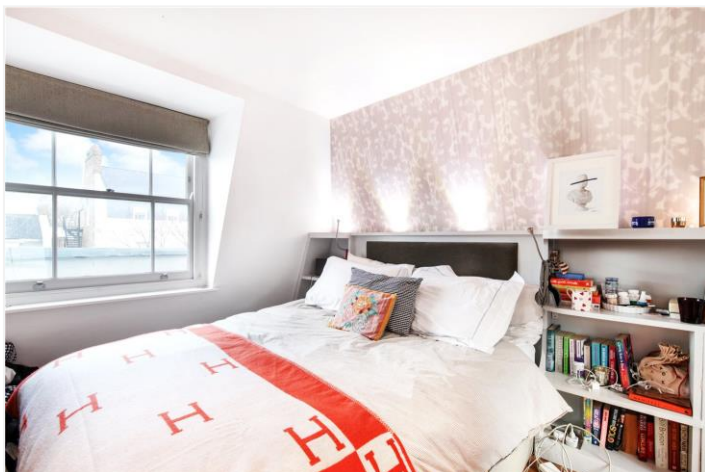
Property comprises open plan living room with vaulted ceilings, French doors leading out to west, facing pretty balcony, fully fitted open plan kitchen, spacious double bedroom with walk-in wardrobe and ensuite bathroom with bath tub and shower. The property is beautifully presented throughout and has an abundance of charm. The property is offered furnished and viewings are highly recommended.

### LOCATION:

Pembridge Place is one of Notting Hill's most sought-after streets – an imposing residential street running north from Pembridge Square, conveniently placed between Westbourne Grove and Notting Hill Gate.

### LOCAL AUTHORITY AND COUNCIL TAX BAND:

Royal Borough of Kensington and Chelsea (Band E)



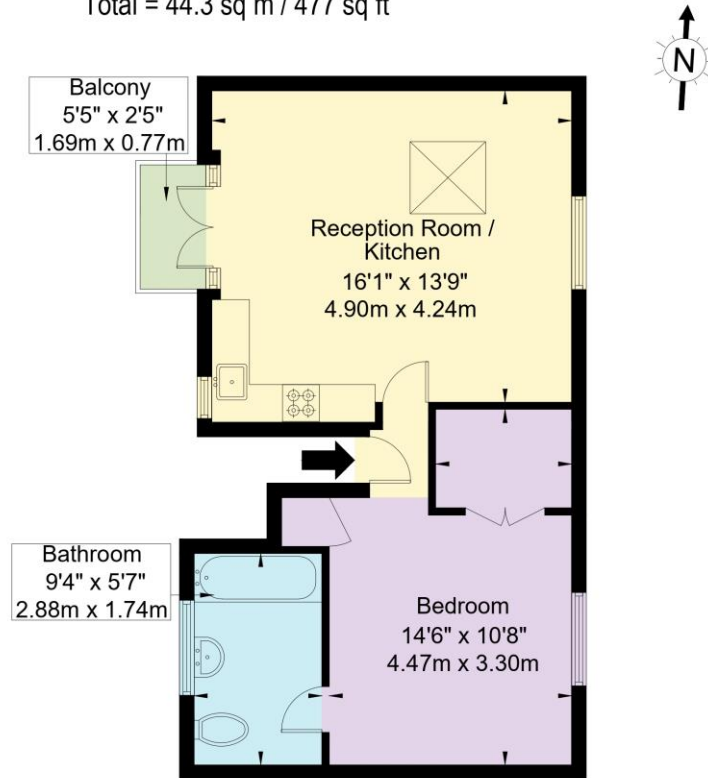


# Pembridge Place, W2 4XB

Approx Gross Internal Area = 43 sq m / 462 sq ft

Balcony = 1.3 sq m / 13 sq ft

Total = 44.3 sq m / 477 sq ft



Third Floor

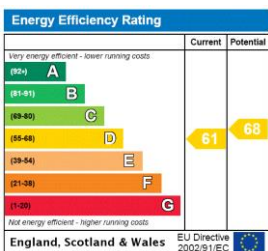
Ref:

Copyright **BLEU  
PLAN**

The Floor plan is not to scale and measurements and areas shown are approximate and therefore should be used for illustrative purposes only. The plan has been prepared in accordance with the RICS code of Measuring Practice and whilst we have confidence in the information produced it must not be relied on. If there is any aspect of particular importance, you should carry out or commission your own inspection of the property.

Copyright @ BLEUPLAN

This floorplan is for illustration purposes only and is not to scale. The position and size of doors, windows, appliances and other features are approximate.



Notting Hill | 0207 727 3227 | [nottinghill@winkworth.co.uk](mailto:nottinghill@winkworth.co.uk)

**Winkworth**

[winkworth.co.uk](http://winkworth.co.uk)

for every step...

winkworth wishes to inform prospective buyers and tenants that these particulars are a guide and act as information only. All our details are given in good faith and believed to be correct at the time of printing but they don't form part of an offer or contract. No Winkworth employee has authority to make or give any representation or warranty in relation to this property. All fixtures and fittings, whether fitted or not are deemed removable by the vendor unless stated otherwise and room sizes are measured between internal wall surfaces, including furnishings.