



**GLOVER HOUSE, NUNHEAD LANE, PECKHAM RYE, SE15
OFFERS IN EXCESS OF £300,000 LEASEHOLD**

A SPACIOUS, BRIGHT & AIRY ONE-BEDROOM MAISONETTE, SITUATED IN A POPULAR LOCATION CLOSE TO PECKHAM RYE PARK.

DESCRIPTION:

A spacious, bright and airy one-bedroom maisonette, lovingly renovated and maintained by the current owners, is situated in a popular location close to Peckham Rye Park. This lovely maisonette is offered to the market chain free and in fantastic condition. Boasting wood flooring, a spacious bedroom with built-in storage, large open-plan kitchen reception with built-in appliances, and wooden worktops. The property further offers communal gardens and off-street designated parking. The location offers fantastic access to the bars, shops, and restaurants on Evelina Road, as well as Rye Lane and Lordship Lane. Transport links are provided via Peckham Rye for the overground or Nunhead station for direct links to Victoria. This is a lovely flat and an ideal first-time purchase with early viewings highly advised.

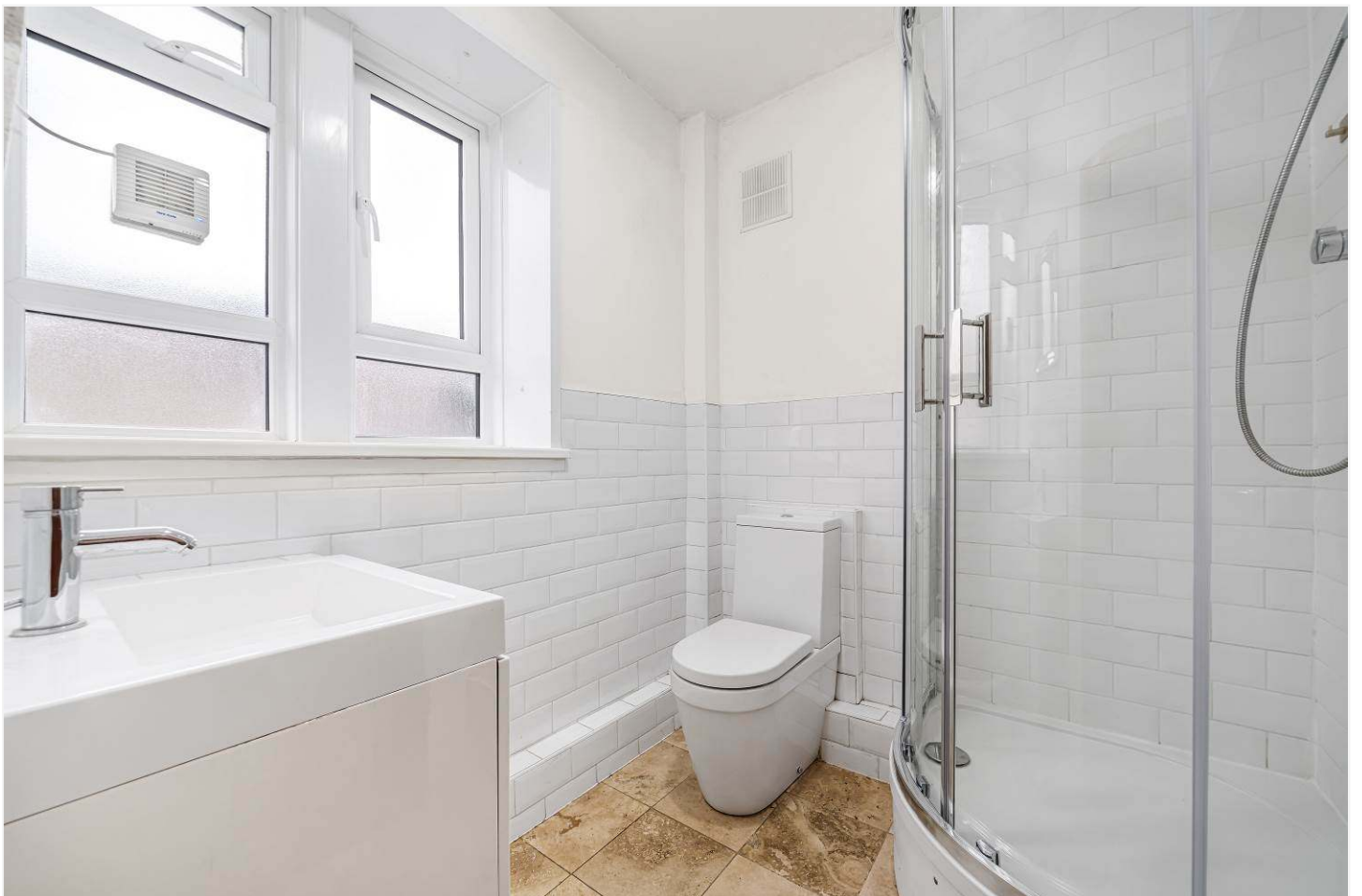
Dulwich | 020 8299 2722 | dulwich@winkworth.co.uk

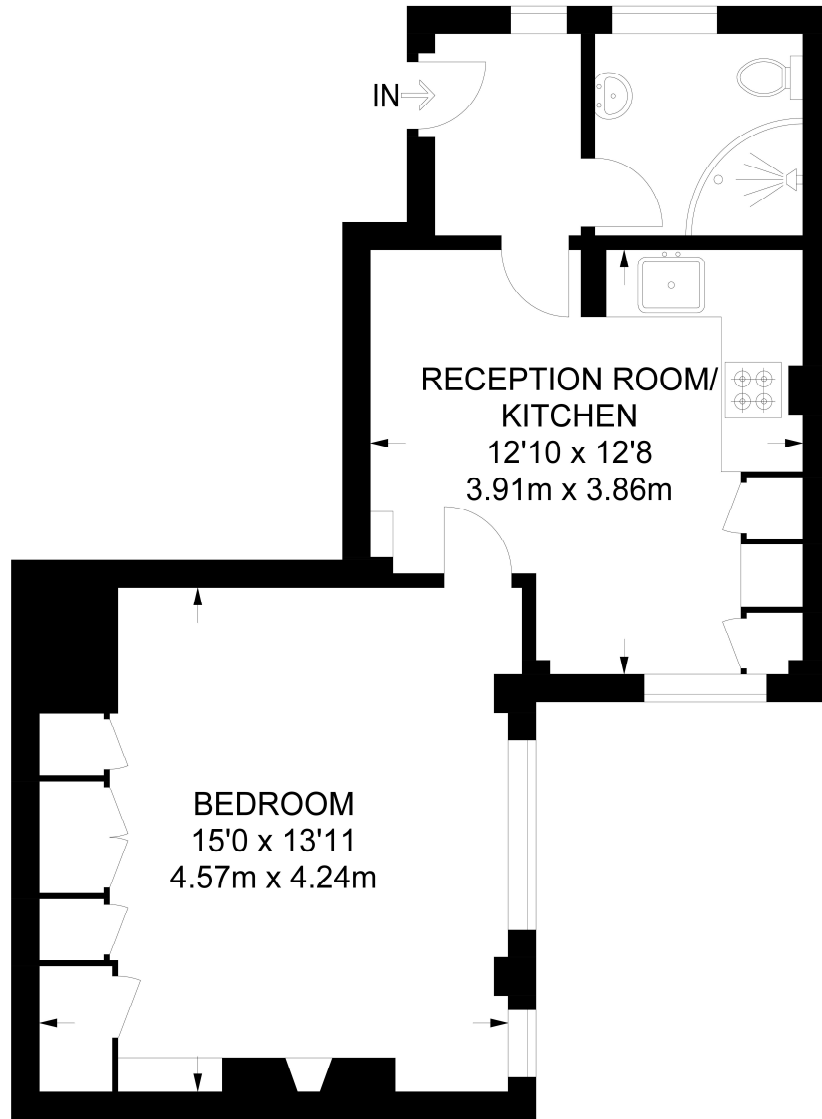
AT A GLANCE

- One Bedroom
- Ground Floor Maisonette
- Open-Plan Kitchen/Reception
- Designated Parking
- Close to Peckham Rye Park
- Chain Free

Winkworth



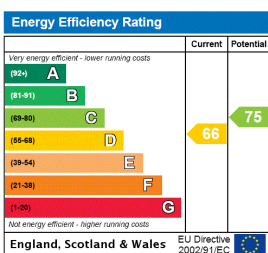




GROUND FLOOR

**APPROXIMATE GROSS INTERNAL AREA
430 SQ FT / 39.9 SQ M**

This floorplan is for illustration purposes only and is not to scale. The position and size of doors, windows, appliances and other features are approximate.



Dulwich | 020 8299 2722 | dulwich@winkworth.co.uk



winkworth.co.uk

See things differently

Winkworth wishes to inform prospective buyers and tenants that these particulars are a guide and act as information only. All our details are given in good faith and believed to be correct at the time of printing but they don't form part of an offer or contract. No Winkworth employee has authority to make or give any representation or warranty in relation to this property. All fixtures and fittings, whether fitted or not are deemed removable by the vendor unless stated otherwise and room sizes are measured between internal wall surfaces, including furnishings.