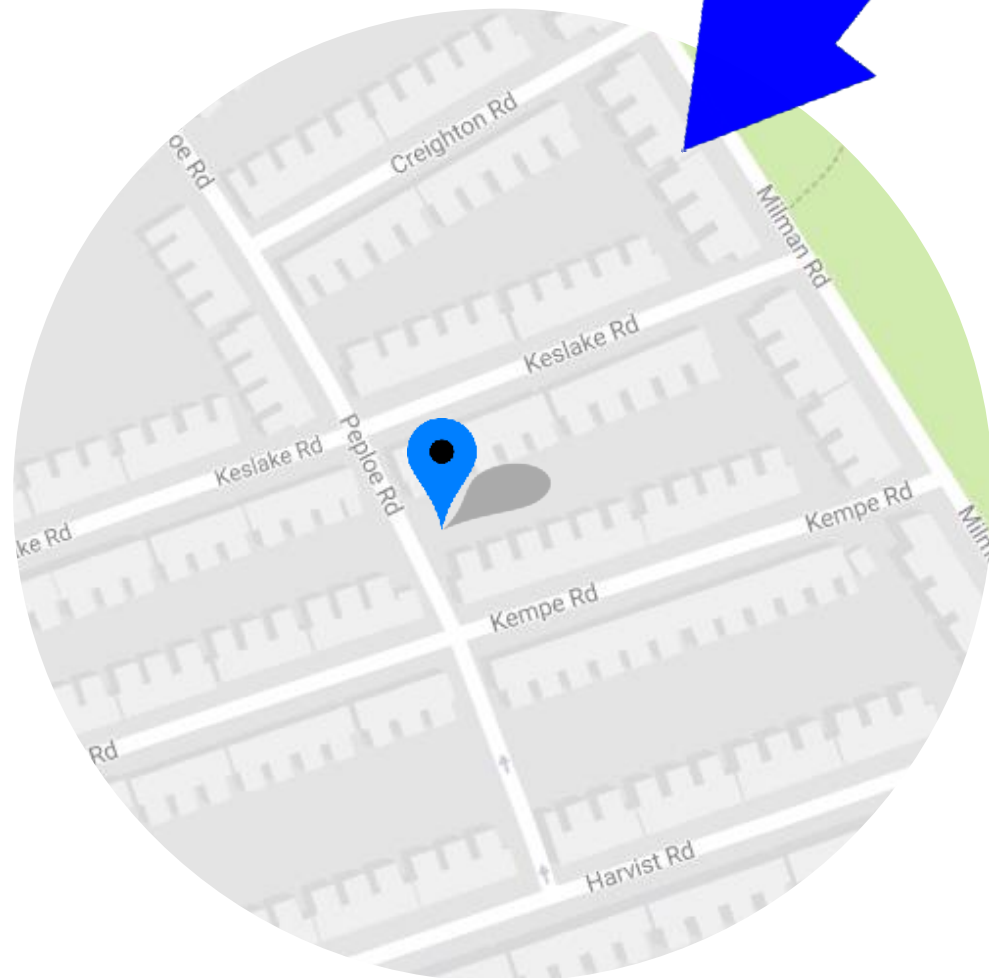
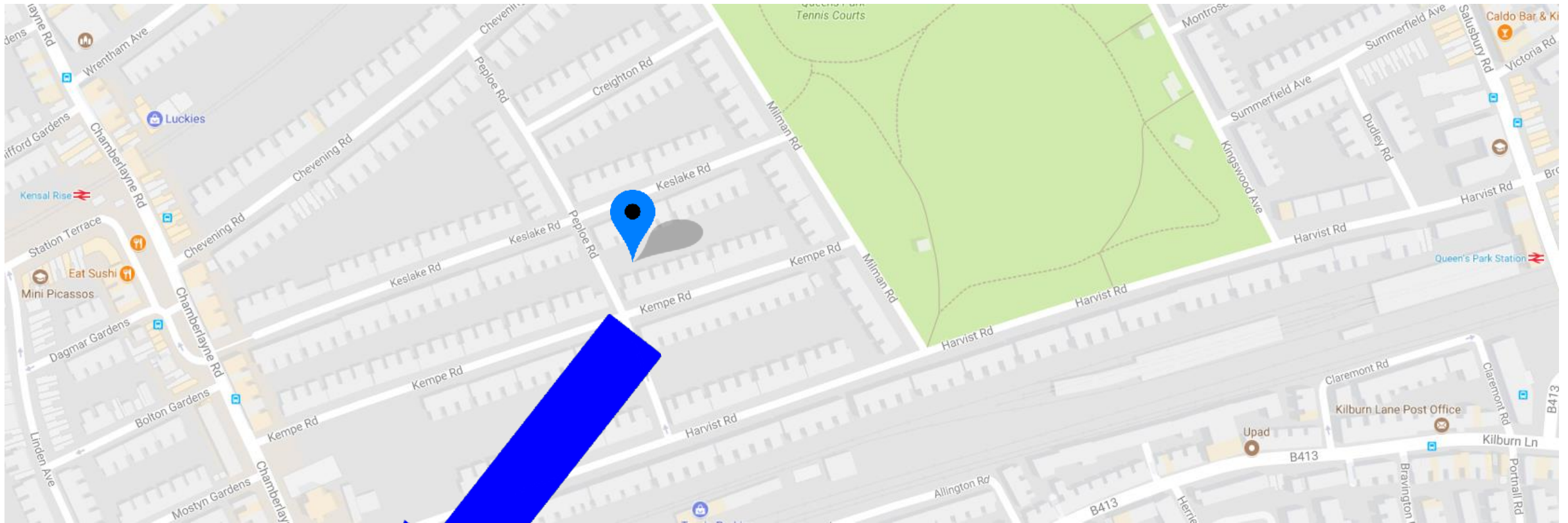


Winkworth

Development & Commercial Investment

Peploe Road

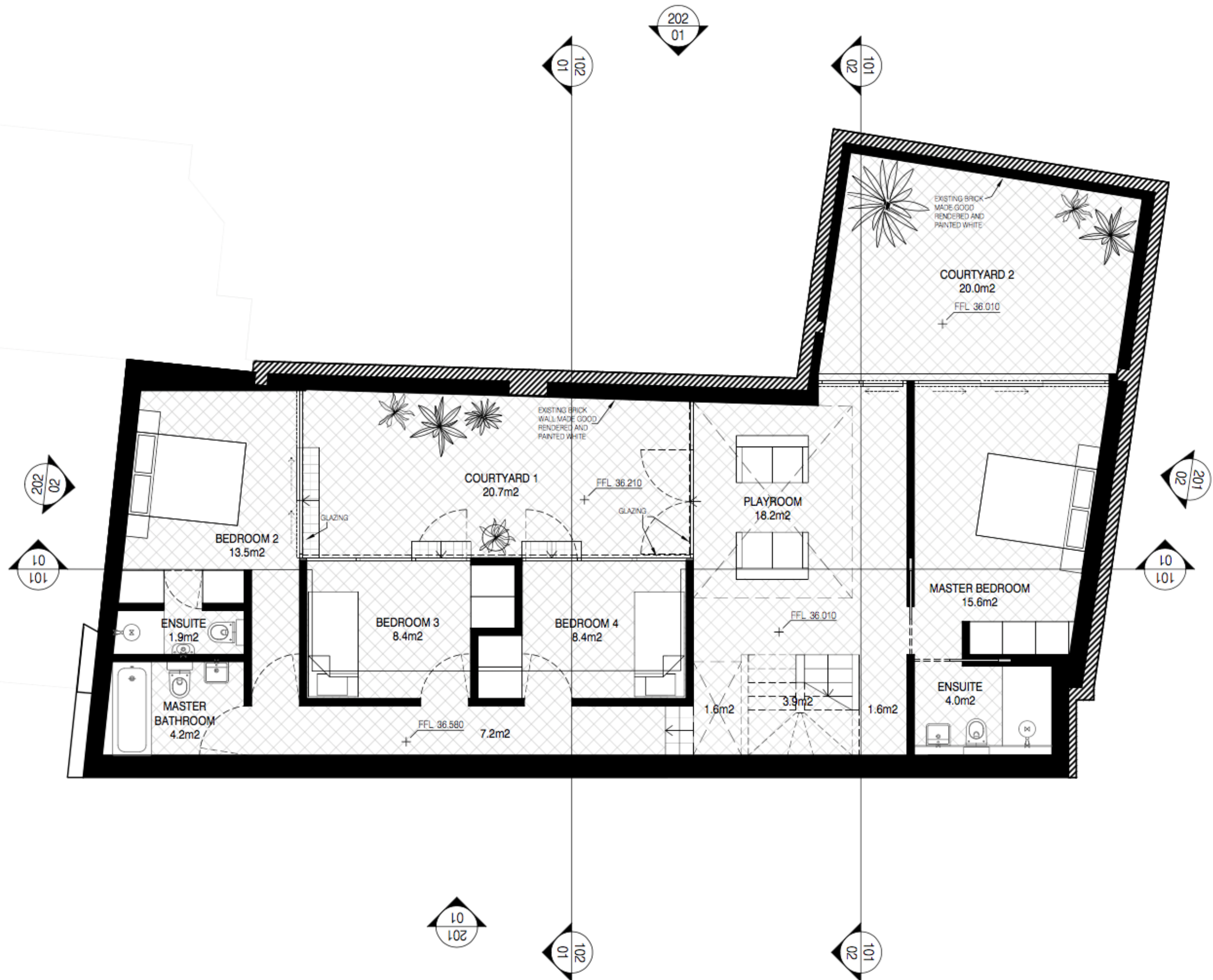




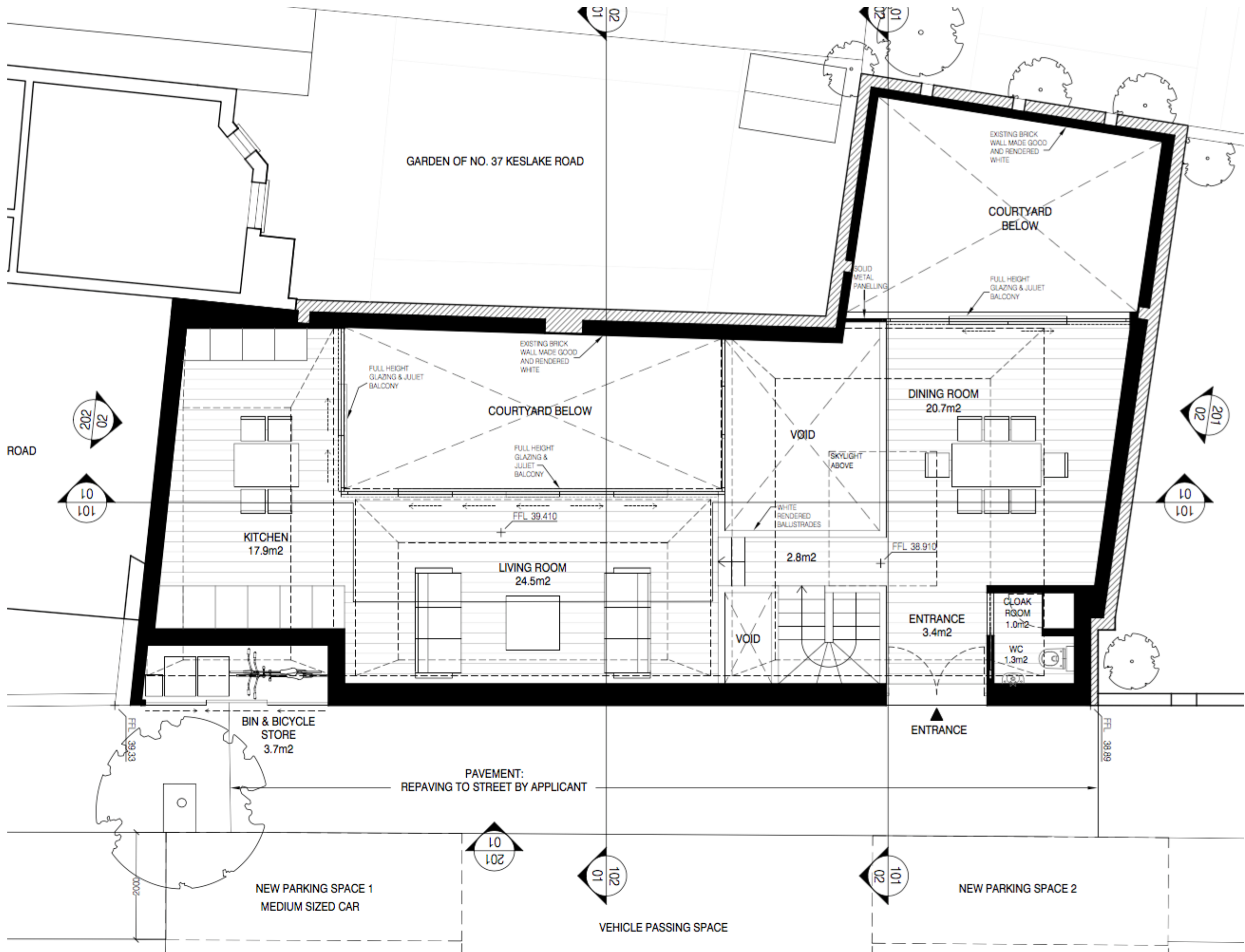
## **Peploe Road**

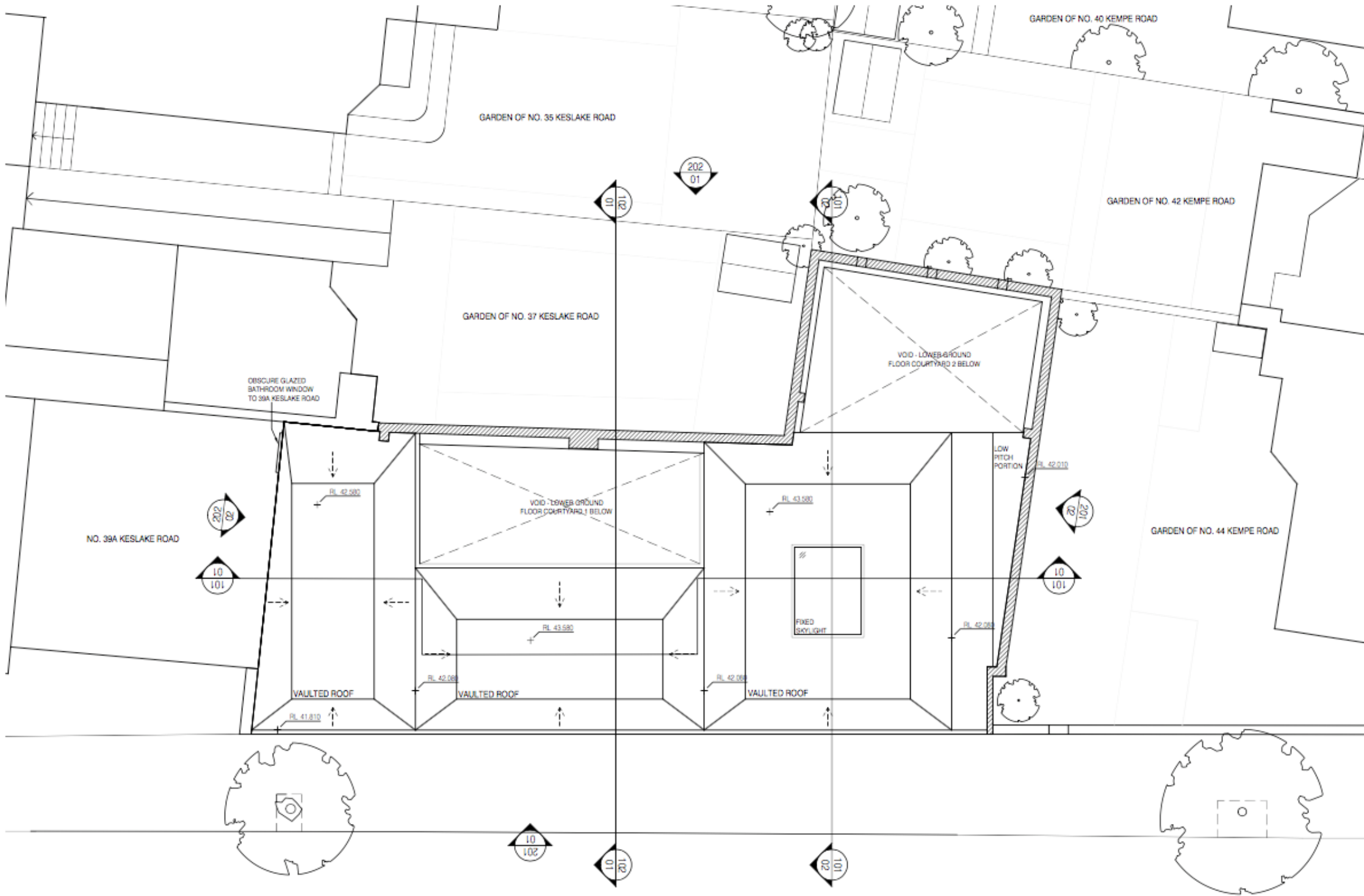
We have planning permission to build a contemporary 4 bedroom, 3 bathroom (two en-suite) house with a courtyard designed by the RIBA award winning vPPR architects.

The house will be situated between Keslake Rd and Kempe Rd only 1 block away from Queens Park itself.









REVISION	NO.	DESCRIPTION	DATE

NOTES:  
1. DO NOT SCALE FROM THIS DRAWING.

KEY:  
FL - FLOOR LEVEL  
FRL - FINISHED FLOOR LEVEL  
RL - ROOF LEVEL



PROJECT	PEPLOE ROAD
STATUS	PLANNING
DRAWN	CM
CHECKED	TvP
DATE	10 MAR 2017
SCALE	1:50 @ A1 / 1:100 @ A3
DRAWING TITLE	PROPOSED ROOF PLAN
DRAWING NO.	065-A-012

**vPPR ARCHITECTS**

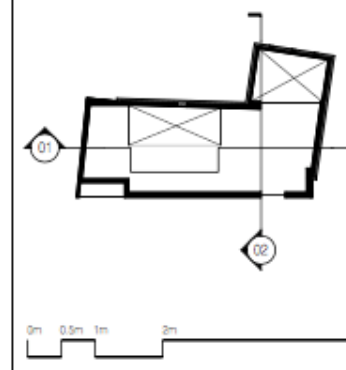
UNIT 12, 5 DURHAM YARD, LONDON E2 6QF  
T. +4420 7729 6168 W. www.vPPR.co.uk

NO.	DATE	DESCRIPTION	BY

NOTES:  
1. DO NOT SCALE FROM THIS DRAWING.

RL - ROOF LEVEL  
UGF - UPPER GROUND FLOOR  
LGF - LOWER GROUND FLOOR

--- PREVIOUS ROOF LEVEL OF 1ST PLANNING APPLICATION, REF: 15/2562  
- - - PREVIOUS ROOF LEVEL OF 2ND PLANNING APPLICATION, REF: 16/0440  
--- EXISTING BUILDING LEVELS



project	PEPLOE ROAD
status	PLANNING
drawn	CM
checked	TvP
date	10 MAR 2017
scale	1:50 @ A1 / 1:100 @ A3
drawing title	PROPOSED SECTIONS AA & BB
drawing no.	065-A-101

**vPPR**  
**ARCHI**  
**TECTS**

UNIT 12, 5 DURHAM YARD, LONDON E2 6DF  
T: +4420 7729 6168 W: www.vPPR.co.uk

01 SECTION AA  
SCALE: 1:50 @ A1 / 1:100 @ A3

02 SECTION BB  
SCALE: 1:50 @ A1 / 1:100 @ A3

		Existing	Proposed
NIA	Upper Ground Floor Lower Ground Floor	159m <sup>2</sup> / 1711ft <sup>2</sup>	75m <sup>2</sup> / 807ft <sup>2</sup> 89m <sup>2</sup> / 958ft <sup>2</sup>
Amenity Space	Upper Ground Floor Lower Ground Floor	0m <sup>2</sup>	0m <sup>2</sup> 41m <sup>2</sup> / 441ft <sup>2</sup>
NIA	TOTAL	159.30m <sup>2</sup> / 1715ft <sup>2</sup>	164.2m <sup>2</sup> / 1767ft <sup>2</sup>
Amenity Space	TOTAL	0m <sup>2</sup>	41m <sup>2</sup> / 441ft <sup>2</sup>











