



CARNFORTH ROAD, SW16
£775,000 FREEHOLD

**AN EXCEPTIONAL AND EXTENSIVELY RENOVATED
 FOUR-BEDROOM FAMILY HOUSE ARRANGED OVER
 THREE FLOORS.**

Tooting | 020 8767 5221 | tooting@winkworth.co.uk

Winkworth

for every step...

winkworth.co.uk



DESCRIPTION

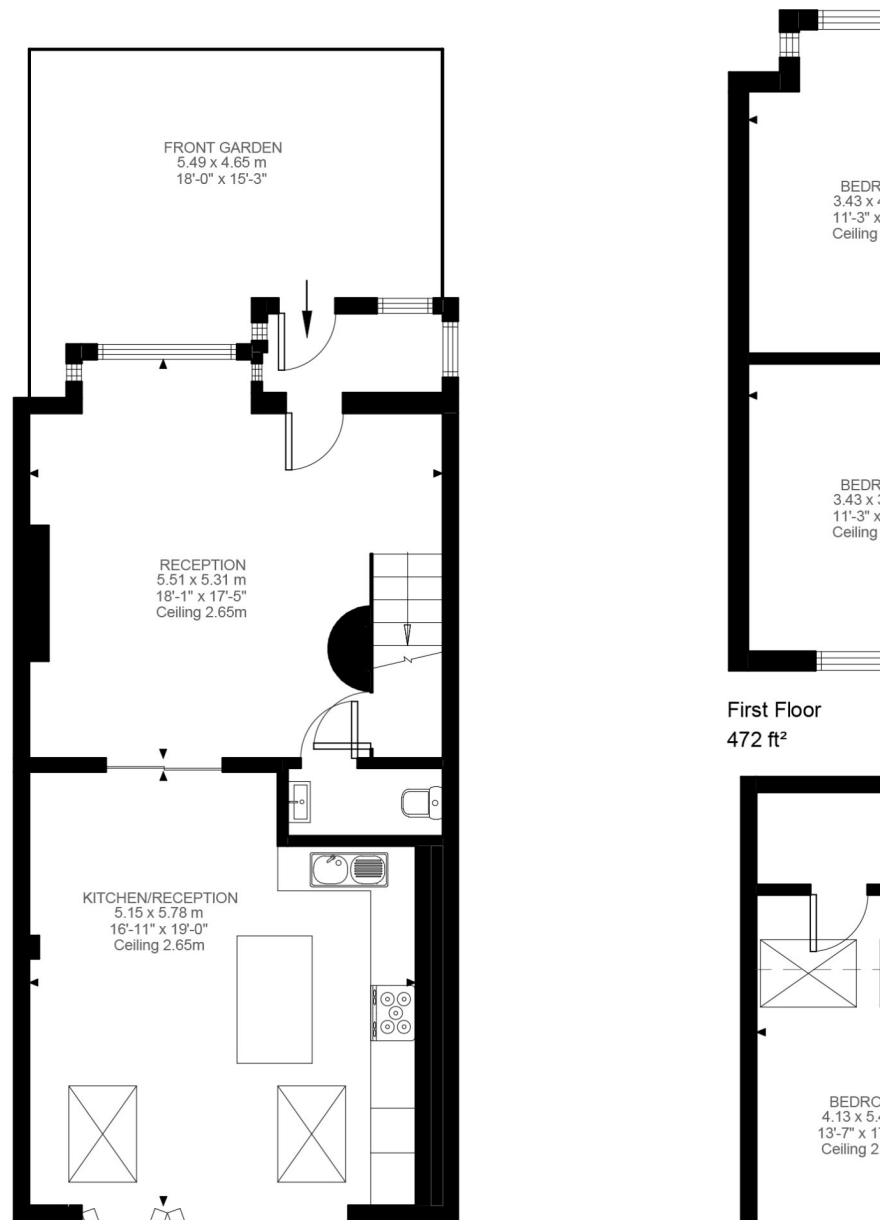
An exceptional and extensively renovated four-bedroom family house arranged over three floors. The property has been meticulously renovated to the highest standard offering three wonderful double bedrooms and a further smaller bedroom currently used as an office. The master bedroom at the top of the house as an impressive en-suite shower room and beautiful built in bespoke cupboards. On the first floor there is a modern family bathroom. A fabulous open plan kitchen/dining room with large bi-folding doors leading to the private rear garden. To the front of the house is a separate large reception room with a wonderful large bay window and a separate WC is located under the stairs.

Tenure: Freehold

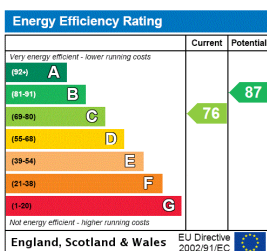
Council: Lambeth council tax band D

Carnforth Road is ideally located in Streatham Vale and is a walk from Streatham Common Station with direct access to Central London via Clapham Junction, London Bridge and London Victoria. Woodmansterne and Granton schools are a short walk away as are the shops, bars and restaurants local to Streatham Vale.





This floorplan is for illustration purposes only and is not to scale. The position and size of doors, windows, appliances and other features are approximate.



Tooting | 020 8767 5221 | tooting@winkworth.co.uk

for every step...

winkworth.co.uk

Winkworth wishes to inform prospective buyers and tenants that these particulars are a guide and act as information only. All our details are given in good faith and believed to be correct at the time of printing but they don't form part of an offer or contract. No Winkworth employee has authority to make or give any representation or warranty in relation to this property. All fixtures and fittings, whether fitted or not are deemed removable by the vendor unless stated otherwise and room sizes are measured between internal wall surfaces, including furnishings.