



HIGHLEVER ROAD, LONDON, W10
£4,500 PER MONTH UNFURNISHED

Winkworth



HIGHLEVER ROAD, LONDON, W10

A stunning four bedroom Edwardian house which is set on three floors each filled with an abundance of charm and period features.

This four bedroom Edwardian home which is set over three floors, each filled with an abundance of charm and period features. The property benefits from a good amount of natural light and high ceilings.

Comprises a lovely double aspect reception room with wooden floors and galley kitchen leading onto a fantastic west facing garden. Upstairs there are three large bedrooms and a single bedroom, which could be used as an office or nursery room.

LOCATION

Highlever Road is a lovely quiet street within the St. Quintin Conservation area, which is close to the shops and cafes on St. Helens Gardens and Ladbroke Grove. Latimer Road and Ladbroke Grove Underground Stations are within walking distance.

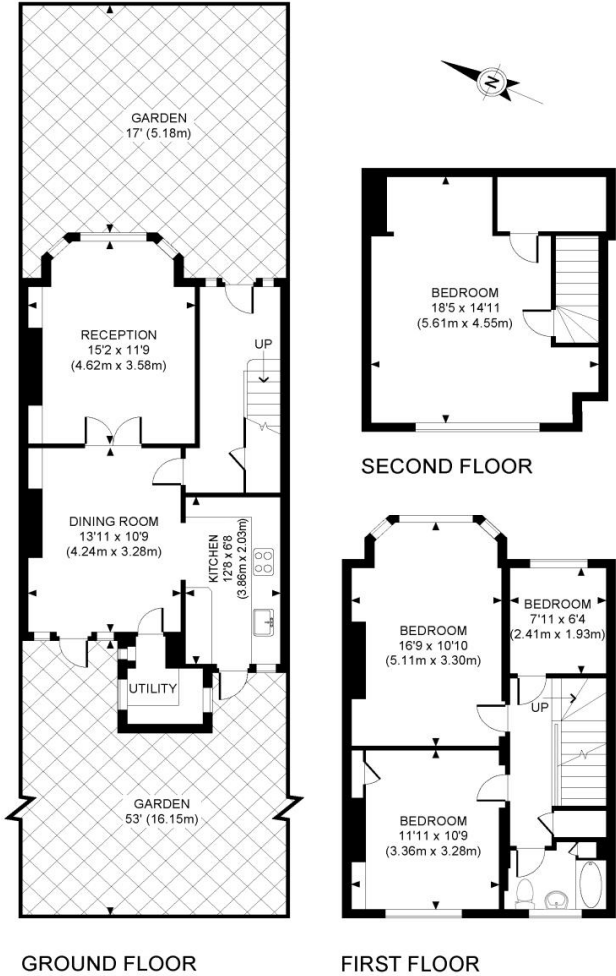
DIRECTIONS

Highlever Road is a lovely quiet street within the St. Quintin Conservation area, which is close to the shops and cafes on St. Helens Gardens and Ladbroke Grove. Latimer Road and Ladbroke Grove Underground Stations are within walking distance.



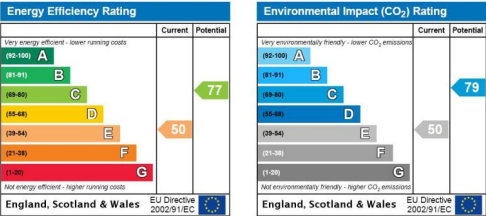


Highlever Road, W10



APPROXIMATE GROSS INTERNAL AREA 1318 SQ FT / 122.45 SQ M

Whilst every attempt has been made to ensure the accuracy of this floor plan; measurements of door, windows, rooms and all other items are approximate. No responsibility is taken for any error, omission or mis-statement. This floor plan is for illustrative purposes only, and should be treated as such.



North Kensington | 020 7792 5000 | northkensington@winkworth.co.uk

winkworth.co.uk

Winkworth wishes to inform prospective buyers and tenants that these particulars are a guide and act as information only. All our details are given in good faith and believed to be correct at the time of printing but they don't form part of an offer or contract. No Winkworth employee has authority to make or give any representation or warranty in relation to this property. All fixtures and fittings, whether fitted or not are deemed removable by the vendor unless stated otherwise and room sizes are measured between internal wall surfaces, including furnishings.

