



GREENWICH SOUTH STREET, GREENWICH, LONDON, SE10
£540,000 LEASEHOLD

**A STUNNING, TWO BEDROOM SPLIT LEVEL
 CONVERSION FLAT WHICH IS FOUND ON THE FIRST
 AND SECOND FLOOR OF THIS VICTORIAN TERRACED
 HOUSE.**

Greenwich | 02030533033 | greenwich@winkworth.co.uk

Winkworth

winkworth.co.uk

See things differently



DESCRIPTION:

A stunning, two bedroom split level conversion flat which is found on the first and second floor of this Victorian terraced house, that has a commercial unit below (hairdressers). Measuring circa 781 square foot!

The property is in excellent order throughout and features a fabulous 50ft private decked garden, that is south-east facing. It's worth mentioning that a garden of this size and nature is rarely available for a property of this type. Internally the property comprises of a lovely and bright reception room, modern kitchen and lovely bathroom on the first floor. Upstairs there are two spacious and light double bedrooms.

Greenwich South Street is perfectly located in West Greenwich, meaning it is extremely close to the town centre, which offers an excellent array of shops and restaurants, along with mainline rail, DLR and riverboat service. The Royal Park and the open heath are also close by!

AT A GLANCE

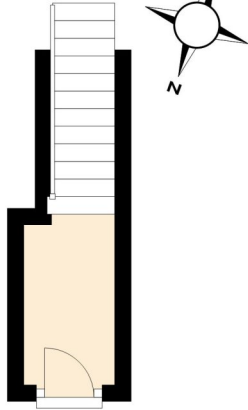
- 2 bedroom apartment in excellent condition
- circa 781 square foot
- split level - first and second floor
- beautiful 50ft private decked garden, south-east facing
- close to town centre and transport links
- close to open heath and park





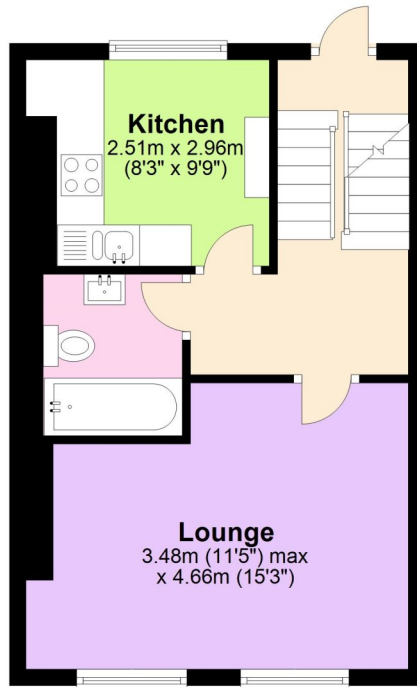
Ground Floor

Approx. 3.6 sq. metres (39.2 sq. feet)



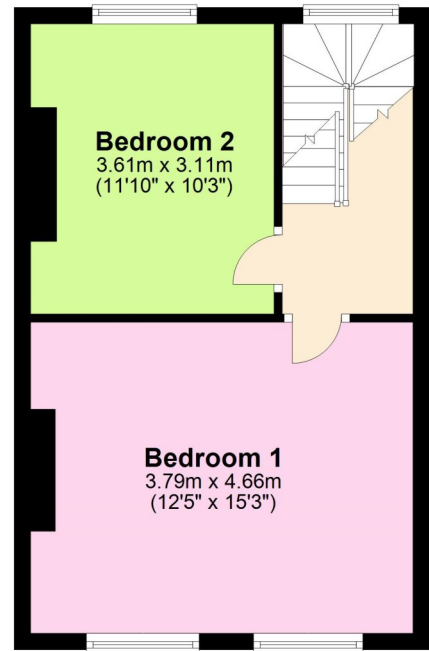
First Floor

Approx. 34.5 sq. metres (371.5 sq. feet)



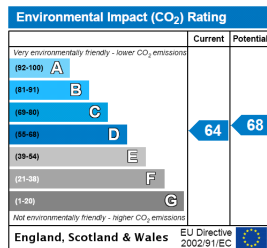
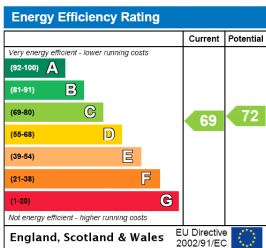
Second Floor

Approx. 34.5 sq. metres (371.5 sq. feet)



Total area: approx. 72.7 sq. metres (782.2 sq. feet)

This floorplan is for illustration purposes only and is not to scale. The position and size of doors, windows, appliances and other features are approximate.



Greenwich | 02030533033 | greenwich@winkworth.co.uk

Winkworth

winkworth.co.uk

See things differently

Winkworth wishes to inform prospective buyers and tenants that these particulars are a guide and act as information only. All our details are given in good faith and believed to be correct at the time of printing but they don't form part of an offer or contract. No Winkworth employee has authority to make or give any representation or warranty in relation to this property. All fixtures and fittings, whether fitted or not are deemed removable by the vendor unless stated otherwise and room sizes are measured between internal wall surfaces, including furnishings.