



Riverside House, Fobney Street, RG1 6BH

£1,950 per month *Furnished*

3  1  2 

Three double bedroom fourth floor apartment with two private balconies overlooking the Kennet & Avon canal. The property is located in Reading Town Centre next to the Oracle Shopping Centre. Internally the apartment comprises three large bedrooms, an open plan living dining room leading into the kitchen with fitted appliances, two bathrooms including an en suite to the master and two balconies off the master bedroom and living area. Benefits also include an intercom system and secure allocated parking space. Available now. Furnished.

KEY FEATURES

- Fourth floor apartment
- Three double bedrooms
- Council tax band D
- Two private balconies
- Allocated parking space
- Available now
- Furnished



Reading

0118 4022 300 | reading@winkworth.co.uk

Winkworth

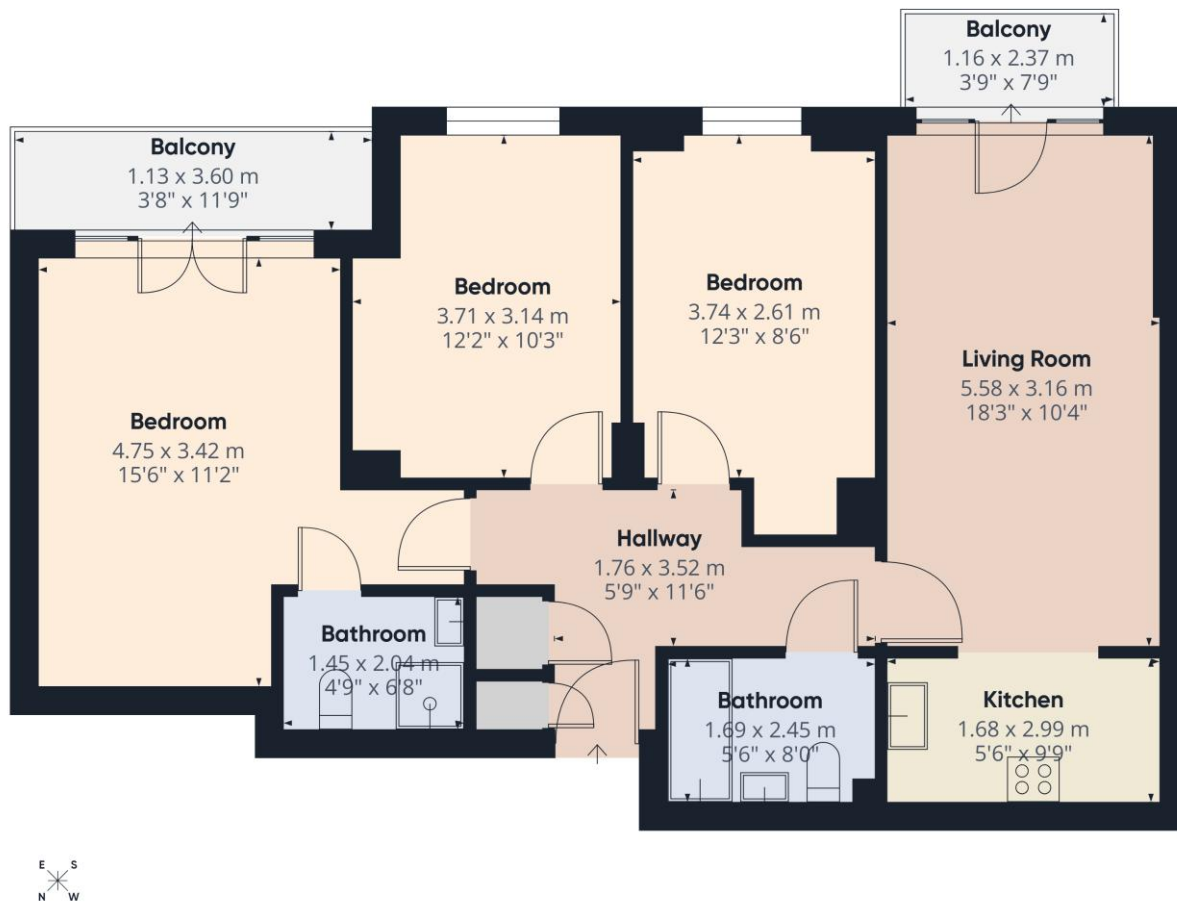
for every step...





MATERIAL INFO

Deposit: £2,250.00
Holding Deposit: £450.00
Council Tax Band: D
EPC rating: C

Approximate total area⁽¹⁾

77.6 m²
835 ft²

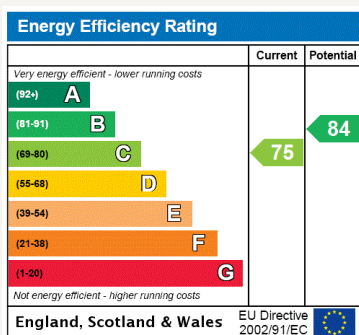
Balconies and terraces

6.8 m²
73 ft²

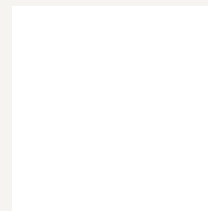
(1) Excluding balconies and terraces

Calculations reference the RICS IPMS 3C standard. Measurements are approximate and not to scale. This floor plan is intended for illustration only.

GIRAFFE360



For more information, scan the QR code or visit the link below


<https://www.winkworth.co.uk/rent/property/REA160551>

Where no figures are shown, we have been unable to ascertain the information. All figures that are shown were correct at the time of printing.

Reading

0118 4022 300 | reading@winkworth.co.uk

Winkworth

for every step...

Winkworth wishes to inform prospective buyers and tenants that these particulars are a guide and act as information only. All our details are given in good faith and believed to be correct at the time of printing but they don't form part of an offer or contract. No Winkworth employee has authority to make or give any representation or warranty in relation to this property. All fixtures and fittings, whether fitted or not are deemed removable by the vendor unless stated otherwise and room sizes are measured between internal wall surfaces, including furnishings.