



ANGEL HOUSE 20-32, PENTONVILLE ROAD, LONDON, N1
OIEO £300,000 LEASEHOLD

A ONE BEDROOM APARTMENT MOMENTS FROM ANGEL UNDERGROUND STATION

Islington | 0207 354 2480 | islington@winkworth.co.uk

Winkworth

winkworth.co.uk

See things differently



DESCRIPTION:

This one bedroom apartment is located on the second floor of this sought after 1930's building. The property comprises of an entrance hall with doors leading to all rooms, separate living room, fitted kitchen with space for white goods, bathroom with floor to ceiling tiles and bath with shower over attachment, and master bedroom. The property is being sold on a chain free basis.

Angel House is located on Pentonville Road and is a very short distance from Angel underground station. The choice of local amenities is abundant with Upper Street, Clerkenwell, Old Street, King Cross and Shoreditch all within easy reach. Bars, restaurants, and shopping facilities including supermarkets and both independent and high street retailers are all moments away.

Transport links are incredibly well serviced by Angel underground station, numerous bus routes and St Pancras International.

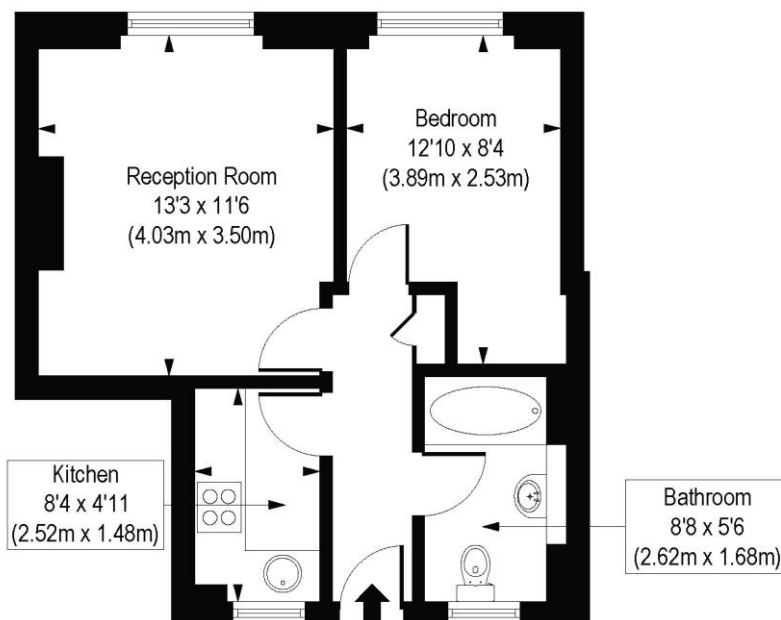
Winkworth



Winkworth

Pentonville Road, N1

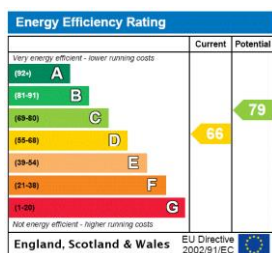
Approx. Gross Internal Floor Area 395 sq. ft / 36.74 sq. m



Second Floor

COMPLIANT WITH RICS CODE OF MEASURING PRACTICE. Floorplan is for illustrative purposes only and is not to scale. Every attempt has been made to ensure the accuracy of the floorplan shown, however all measurements, fixtures, fittings and data shown are an approximate interpretation for illustrative purposes only. Liability for errors, omissions or mis-statement through negligence or otherwise is hereby excluded.

This floorplan is for illustration purposes only and is not to scale. The position and size of doors, windows, appliances and other features are approximate.



Islington | 0207 354 2480 | islington@winkworth.co.uk

Winkworth

winkworth.co.uk

See things differently

Winkworth wishes to inform prospective buyers and tenants that these particulars are a guide and act as information only. All our details are given in good faith and believed to be correct at the time of printing but they don't form part of an offer or contract. No Winkworth employee has authority to make or give any representation or warranty in relation to this property. All fixtures and fittings, whether fitted or not are deemed removable by the vendor unless stated otherwise and room sizes are measured between internal wall surfaces, including furnishings.