



HEXTON COURT, BROWNSWOOD ROAD, LONDON, N4
£550,000 LEASEHOLD

**A SPACIOUS, TWO DOUBLE BEDROOM,
GROUND FLOOR APARTMENT WITH PRIVATE
GARDEN IN N4.**

Highbury | 0207 989 7000 | highbury@winkworth.co.uk

Winkworth

winkworth.co.uk

See things differently



DESCRIPTION:

A bright, two double bedroom apartment positioned across the ground floor of this well-kept block in London, N4. Standing at 623 sqft, the property offers light filled rooms and would make the ideal first-time purchase or buy to let investment. Accommodation comprises of a wonderfully spacious reception room leading out to a seclude, private garden. The kitchen features ample worktop space and cupboards while being incredibly social with an open hatch through to the living room creating the perfect entertaining space. Both bedrooms are very good sized doubles and positioned at separate ends of the apartment, while the property is completed with a modern family bathroom and ample storage throughout.

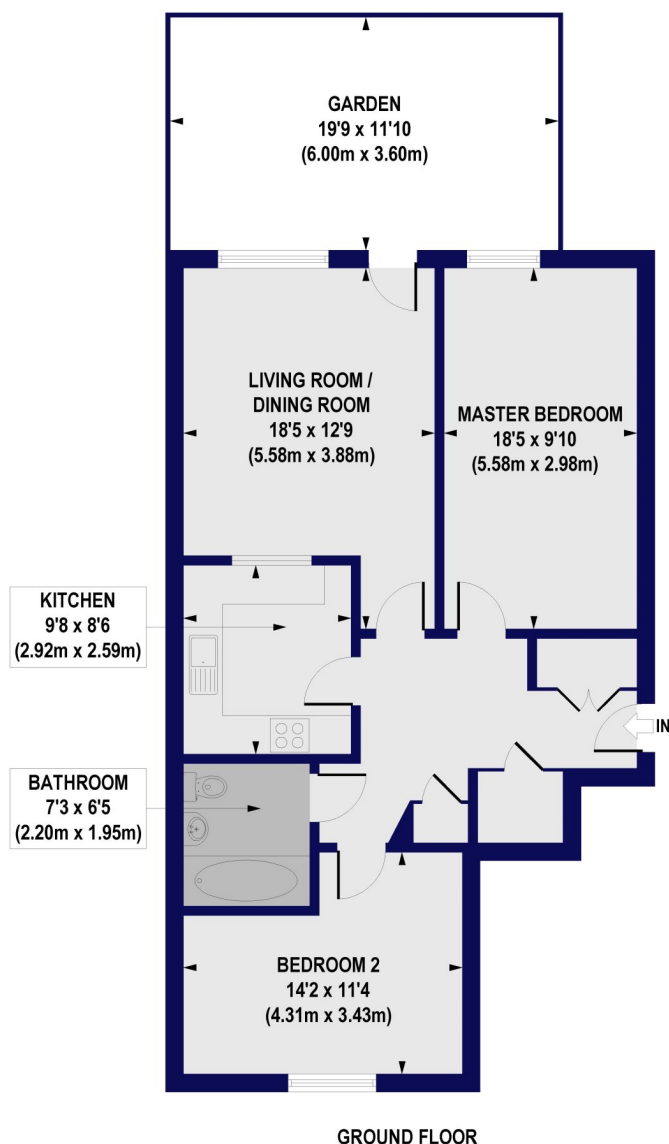
Brownswood Road is well connected and perfectly situated for the amenities of the prestigious Highbury Barn and Blackstock Road. The green open spaces of Clissold Park are a short distance away and the bars and restaurants of the vibrant Stoke Newington Church St are also close by. Transport Links are well serviced with Arsenal (Piccadilly Line) and Finsbury Park (Victoria and Piccadilly Line and National Rail direct to Moorgate) both within a short distance. There are also several great bus links taking you into the City and West End.

Winkworth



Winkworth

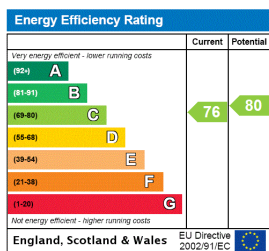
Brownswood Road, N4
Approx. Gross Internal Floor Area 823 sq. ft / 76.44 sq. m



All measurements of walls, doors, windows, fittings and appliances, including their size and location, are shown as standard sizes and do not constitute any warranty or representation by the seller, their agent or CP Creative. Any intending purchaser must satisfy himself by inspection or otherwise as to the correctness of the information contained in these plans. This plan is for illustrative purposes only and should be used as such by any prospective purchasers.

Winkworth

This floorplan is for illustration purposes only and is not to scale. The position and size of doors, windows, appliances and other features are approximate.



Highbury | 0207 989 7000 | highbury@winkworth.co.uk

Winkworth

winkworth.co.uk

See things differently

Winkworth wishes to inform prospective buyers and tenants that these particulars are a guide and act as information only. All our details are given in good faith and believed to be correct at the time of printing but they don't form part of an offer or contract. No Winkworth employee has authority to make or give any representation or warranty in relation to this property. All fixtures and fittings, whether fitted or not are deemed removable by the vendor unless stated otherwise and room sizes are measured between internal wall surfaces, including furnishings.