



ST. LEONARDS TERRACE, UNITED KINGDOM, SW3
£4,950 PER WEEK UNFURNISHED

Winkworth



ST. LEONARDS TERRACE, UNITED KINGDOM, SW3

An immaculately presented four-bedroom family home, perfectly positioned just moments from Sloane Square and enjoying wonderful views over Burton Court.

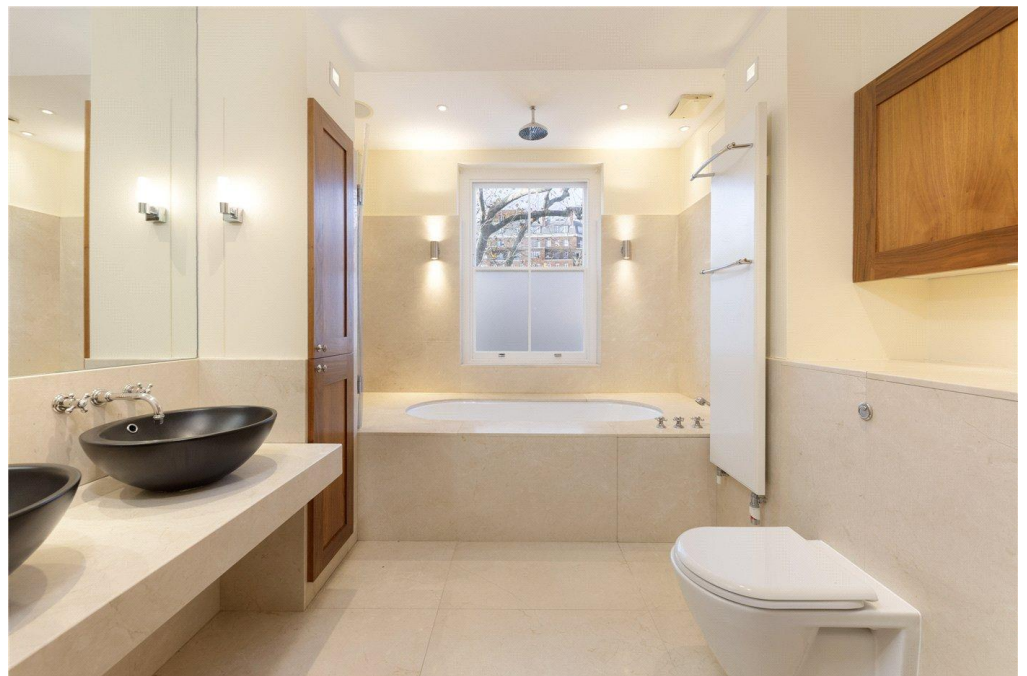
Arranged over four thoughtfully designed floors, the raised ground level features a stunning kitchen and dining area with bespoke cabinetry, a guest WC, and access to a charming patio garden — ideal for entertaining.

The lower ground floor offers a versatile layout with a study, home gym, double bedroom with en suite shower room, and a dedicated laundry room. On the first floor, a beautifully proportioned double reception room benefits from abundant natural light, elegant cornicing, and a gas fireplace, all complemented by views of the gardens at Burton Court.

The principal bedroom suite occupies the second floor and includes a generous walk-through wardrobe and luxurious bathroom. Two further double bedrooms and a family bathroom complete the top floor.

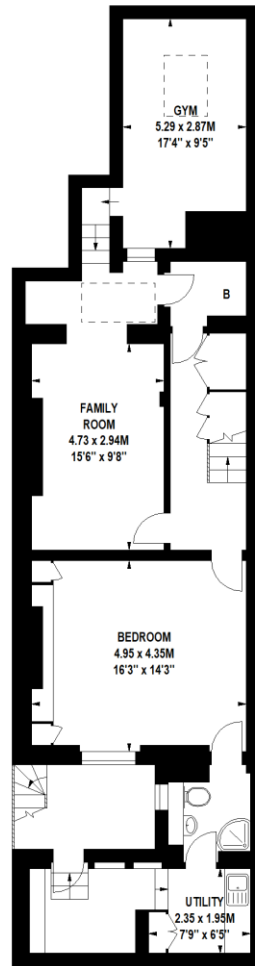


Offered unfurnished, this exceptional home also benefits from a Savant Media System, alarm and video security, and the opportunity for access to Burton Court (by separate arrangement).

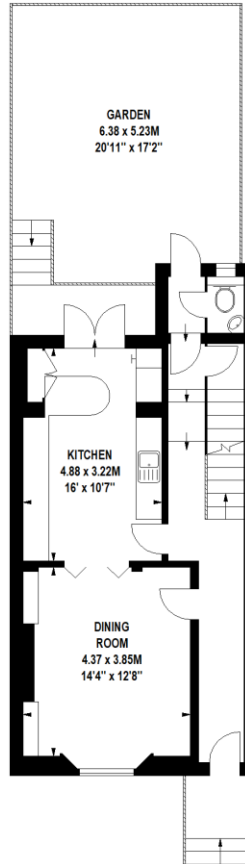


St. Leonards Terrace, SW3

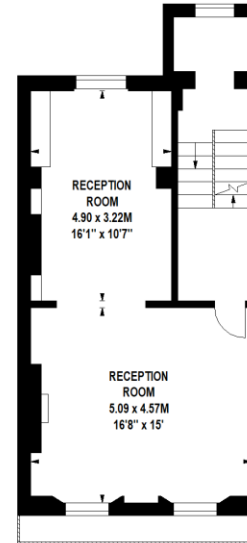
Approximate Gross Internal Area 292 sq.m / 3143 sq. ft



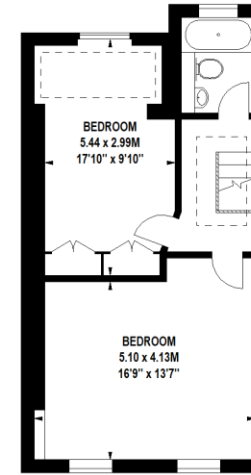
Lower Ground Floor



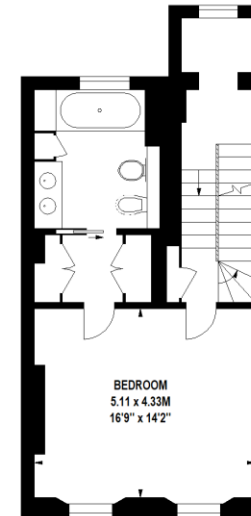
Raised Ground Floor



First Floor



Third Floor



Second Floor

Score	Energy rating	Current	Potential
92+	A		
81-91	B		81 B
69-80	C		
55-68	D	62 D	
39-54	E		
21-38	F		
1-20	G		

Floor Plan produced for WINKWORTH by Mays Floorplans © . Tel 020 3397 4594
Illustration for identification purposes only. Not to scale.
Orientation, measurements, and other details are approximate and for guidance only,
purchasers should verify details independently.
Where a room has a sloping ceiling the dotted line marks 1.50M height,
and all measurements shown are at floor level.

Knightsbridge & Chelsea | 0207 589 6616 | knightsbridge@winkworth.co.uk

winkworth.co.uk

Winkworth wishes to inform prospective buyers and tenants that these particulars are a guide and act as information only. All our details are given in good faith and believed to be correct at the time of printing but they don't form part of an offer or contract. No Winkworth employee has authority to make or give any representation or warranty in relation to this property. All fixtures and fittings, whether fitted or not are deemed removable by the vendor unless stated otherwise and room sizes are measured between internal wall surfaces, including furnishings.

Winkworth