



15 Baily, Newbury RG14 1EF

A spacious apartment located at the heart of Newbury town centre. This bright and airy apartment comes equipped with fantastic kitchen/living room space, large enough for two sofas, coffee table and tv stand.

The modern kitchen is fully fitted with built in fridge/freezer, electric oven and dishwasher. This property also has a fantastic utility cupboard that houses the washing machine and offers great space for storage.

This property benefits from two spacious bedrooms, has an en-suite to the master and even comes with its own private balcony, perfect for looking over Victoria park!

The flat also comes with one allocated parking space.

LEASEHOLD DETAILS

125 year lease from July 2011.

Ground rent: £660

Service charge: £2804 per annum

Block managers; First Port

A copy of the lease is available on request.

EPC B



Winkworth

AT A GLANCE

702 Sqft / 65 Sqmt
Open plan dining/living room
Views across Victoria Park
Modern Kitchen with built in appliances
Two bedrooms
Master with ensuite
Bathroom
Balcony
Allocated Parking

UTILITIES

Gas central heating
Mains water
Mains drainage

SITUATION

Located in the heart of town centre in Newbury Parkway.

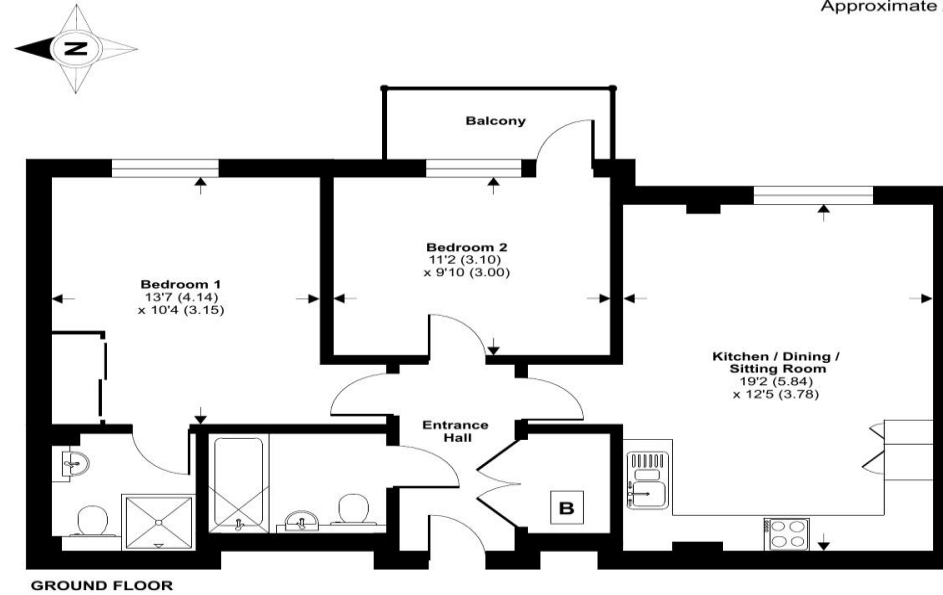
DIRECTIONS

What three words ///helps.pits.hired

Sat Nav: RG14 1EF

Park Way, Newbury, RG14

Approximate Area = 702 sq ft / 65.2 sq m
For identification only - Not to scale



Floor plan produced in accordance with RICS Property Measurement Standards incorporating International Property Measurement Standards (IPMS2 Residential). © nichcom 2023. Produced for Winkworth. REF: 1048129.

Winkworth



Newbury Office

43 Northbrook Street, Newbury, Berkshire RG14 1DT
01635 552552 | newbury@winkworth.co.uk

winkworth.co.uk/newbury

Winkworth

See things differently.