



28 Kimberly Road
Southbourne, BH6 5EX
ASKING PRICE £500,000

Winkworth





ASKING PRICE - £500,000

01202 434365 | southbourne@winkworth.co.uk

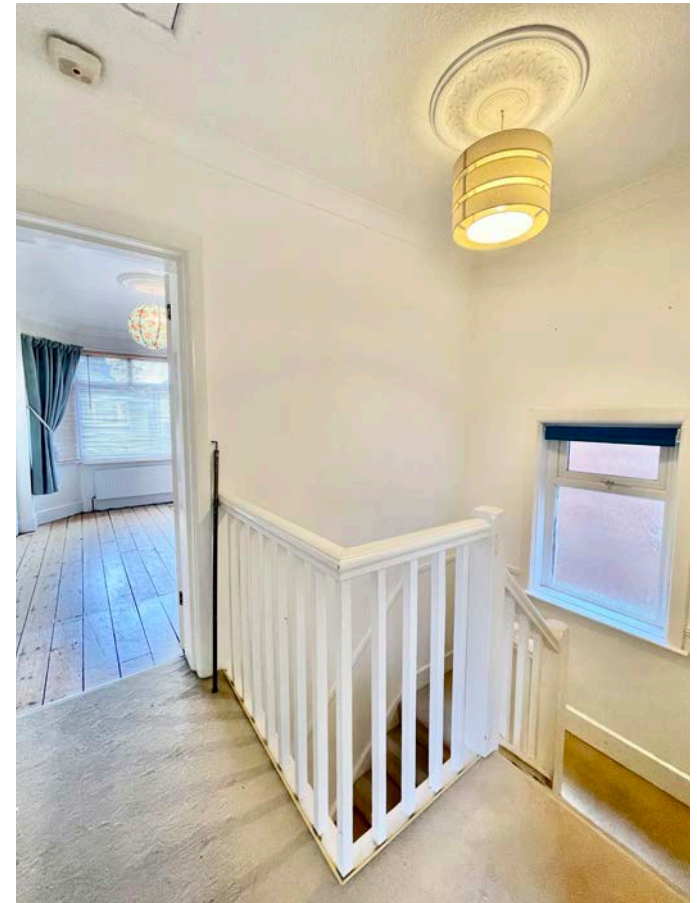
An outstanding family home, situated on a popular residential street, with three bedrooms, a bright and spacious living space and a large rear garden.

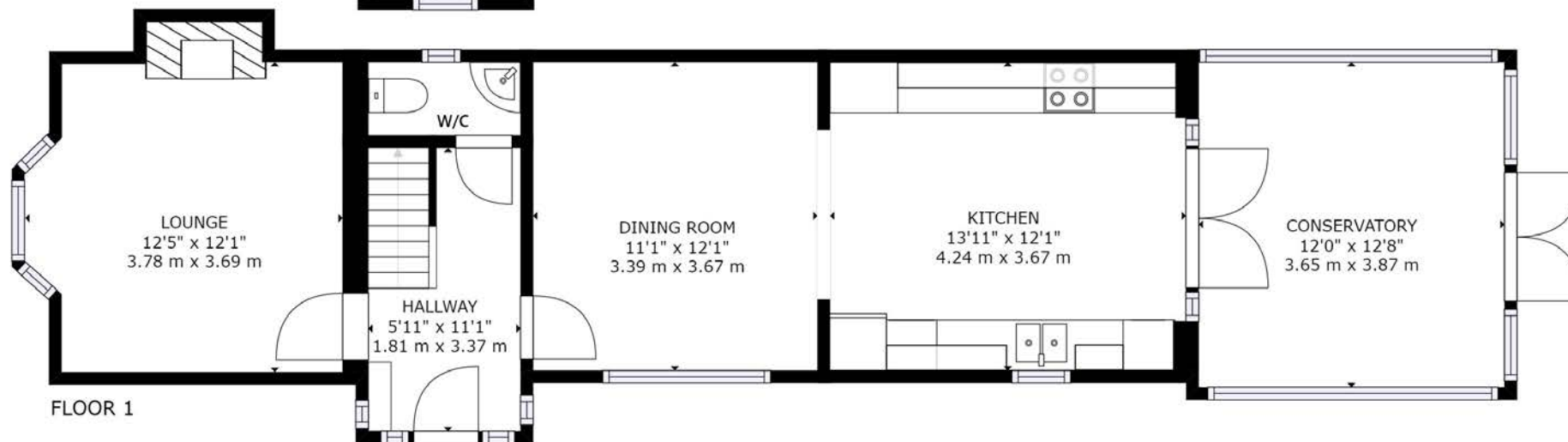
This characterful family home has been tastefully modernised whilst still maintaining many of its original character features such as original wooden flooring and high ceilings.

The bright and spacious lounge features a log burning fireplace which makes a wonderful focal point for the room. The open plan kitchen / dining room has been fitted with modern cream shaker style units and opens up to the conservatory and large rear garden.

Upstairs you will find a generously sized master bedroom with fitted wardrobes and two additional bedrooms. The family bathroom has been tastefully tiled and has a roll top bath with a rainfall shower over head. Outside you will find off road parking for two vehicles and a garage to the rear.

- **Sought After Location**
- **Three Bedrooms**
- **Open Plan Kitchen / Diner**
- **Spacious Lounge**
- **Downstairs w/c**
- **Parking For Two Vehicles**
- **Large Rear Garden**
- **Garage At Rear**





GROSS INTERNAL AREA
 FLOOR 1: 564 sq. ft, 52 m², FLOOR 2: 462 sq. ft, 43 m²
 EXCLUDED AREAS: , CONSERVATORY: 152 sq. ft, 14 m²
 TOTAL: 1027 sq. ft, 95 m²
 SIZES AND DIMENSIONS ARE APPROXIMATE, ACTUAL MAY VARY.





Southbourne is located on the south-east suburb of Bournemouth and neighbours both Christchurch and Boscombe. The area enjoys its own shopping experience with the main high street offering a varied range of shops, restaurants and bars. Southbourne itself enjoys the award-winning blue flag sandy beaches with a level walk promenade extending from Hengistbury Head through to Sandbanks.

A local bus service provides links to Bournemouth and Poole with a different shopping experience together with a number of restaurants and bars providing a vibrant nightlife. A local train station provides direct links to Southampton, Southampton Airport and London which is approximately 100 miles away.

Bournemouth International airport (6 miles) offers a varied schedule of flights to a number of European destinations.



Winkworth Southbourne

29 Southbourne Grove, Southbourne, Dorset, BH6 3QT
01202 434365 | southbourne@winkworth.co.uk

winkworth.co.uk/southbourne

Winkworth