



EDBROOKE ROAD, W9 £2,500 PER MONTH UNFURNISHED

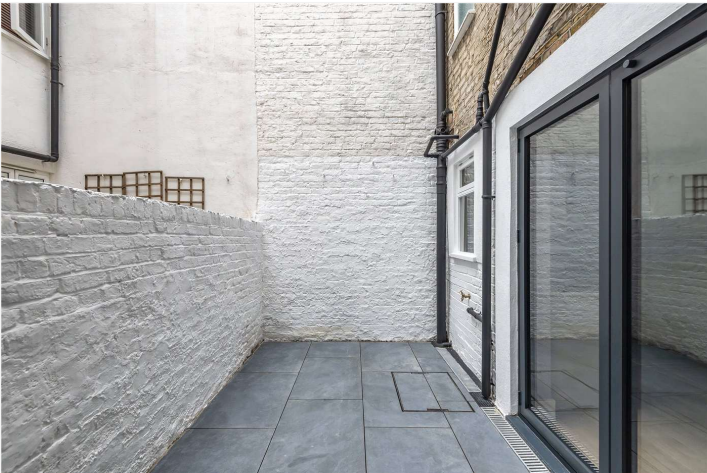
A spacious one-bedroom garden flat with a private entrance forming part of an attractive converted house located in the heart of this fashionable area. The apartment has been finished to a high standard with well-proportioned accommodation and a large, bright, kitchen/family room with glass Louvre doors opening to a private patio. Edbrooke Road is situated within easy reach of local shops, cafes, Paddington Recreation Ground and transport links including buses to Central London, Warwick Avenue Underground (Bakerloo line - 0.7 miles) and Westbourne Park Underground (Hammersmith & City Line - 0.6 miles).

Double Bedroom | Shower Room | Reception Room | Kitchen | Patio

Winkworth

for every step...

[winkworth.co.uk/maida-vale](https://www.winkworth.co.uk/maida-vale)



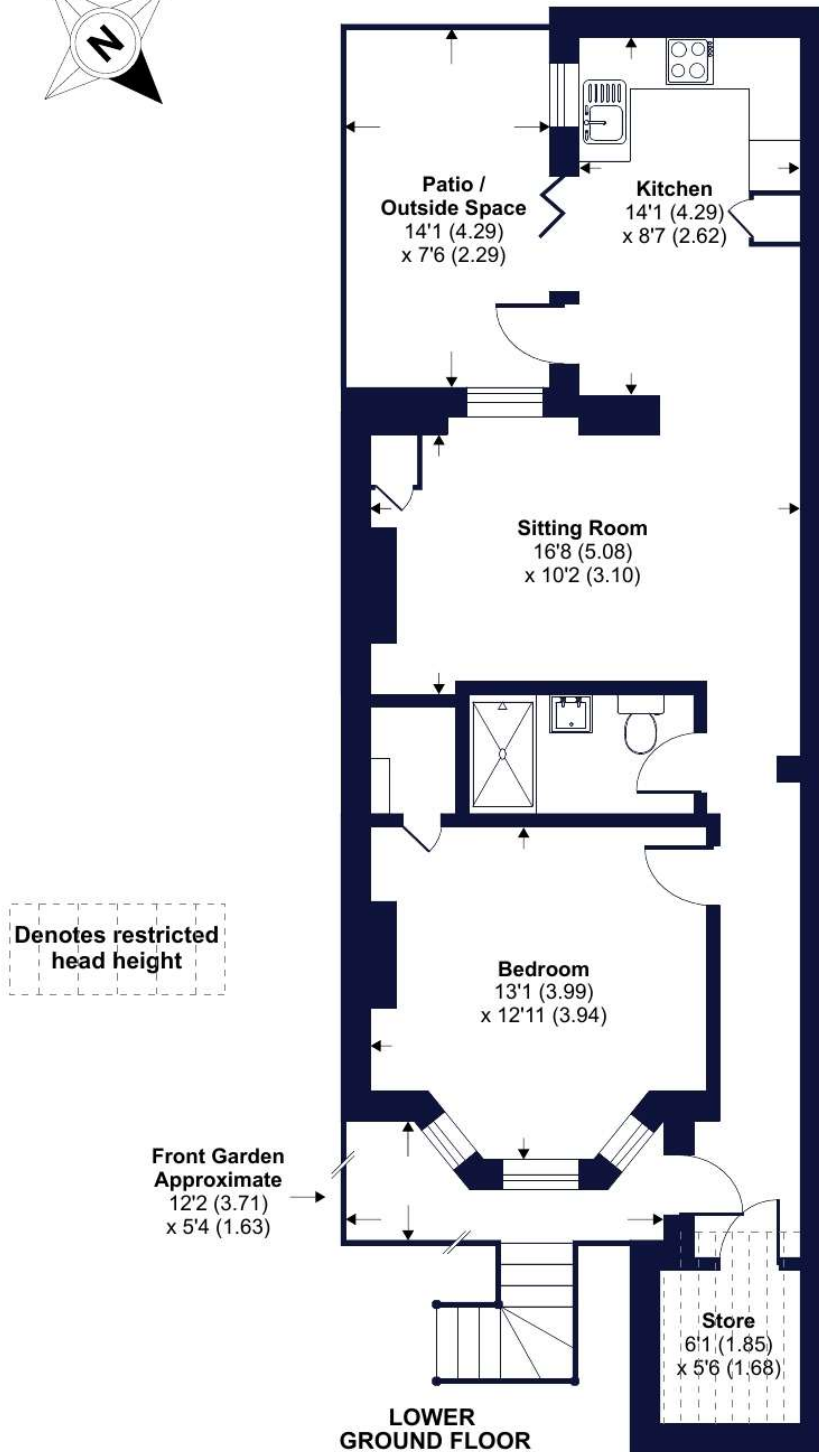
Edbrooke Road, London, W9

Approximate Area = 612 sq ft / 56.8 sq m

Limited Use Area(s) = 40 sq ft / 3.7 sq m

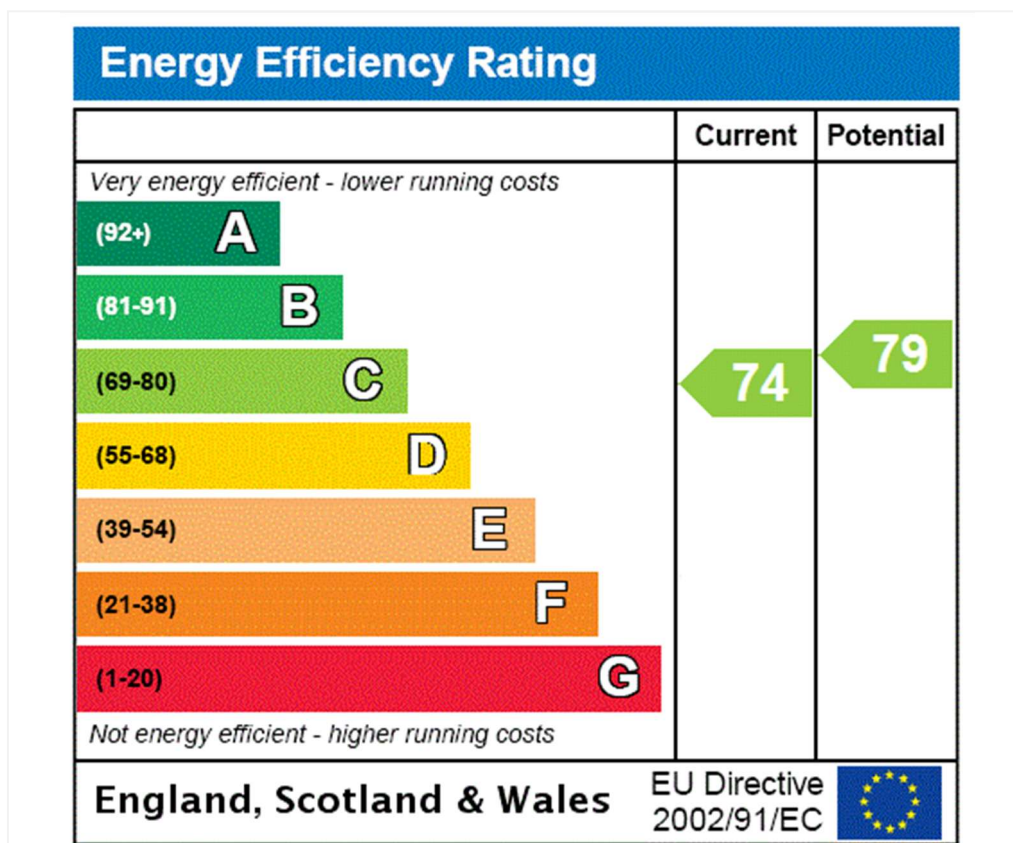
Total = 652 sq ft / 60.5 sq m

For identification only - Not to scale



This floor plan should be used as a general outline for guidance only. Any intending purchaser or lessee should satisfy themselves by inspection searches, enquiries, and full survey as to the correctness of each statement. Any areas, measurements or distances quoted are approximate and should not be used to value a property or be the basis of any sale or let. Floor plan produced in accordance with RICS Property Measurement Standards incorporating International Property Measurement Standards (IPMS2 Residential). © nichcom 2022. Produced for Winkworth. REF: 894289

Winkworth



Tenancy Deposit: £2,884.61

Holding Deposit: 1 weeks rent where the rent is up to £100,000 per annum, 2 weeks rent where the rent is over £100,000 per annum

Council Tax Band: D

Where no figures are shown, we have been unable to ascertain the information. All figures that are shown were correct at the time of printing.

Where no figures are shown, we have been unable to ascertain the information. All figures that are shown were correct at the time of printing.

These particulars are not an offer or contract, nor part of one. You should not rely on statements by Winkworth in the particulars or by word of mouth or in writing "information" as being factually accurate about the property, its condition or its value. Winkworth does not have any authority to make any representations about the property, and accordingly any information given is entirely without responsibility on the part of the agents, seller(s) or lessor(s). These particulars are prepared on the basis of the information supplied by our client and are a rough guide for information only. The photographs show only certain parts of the property. We are not able to check all of the information and therefore are unable to guarantee accuracy. All interested parties are therefore advised to undertake all necessary inspections and checks that they deem appropriate. Where displayed, the square footage is taken from the floor plans, which are created by an independent supplier. These measurements are approximate and included for illustrative purposes only. The measurements may vary. Winkworth does not make any representation as to the accuracy of these measurements and you should seek to verify them for yourself. Winkworth accept no liability for any loss you may suffer if you rely on these measurements. All fixtures and fittings, whether fitted or not are deemed removable by the vendor unless stated. Any reference to alterations to, or use of, any part of the property does not mean that any necessary planning, building regulations or other consent has been obtained. Amenities and appliances have not been tested

Maida Vale | 211-213 Sutherland Avenue, London, W9 1RU | 020 7289 1692 |
maidavale@winkworth.co.uk

Winkworth

for every step...

winkworth.co.uk/maida-vale

Winkworth wishes to inform prospective buyers and tenants that these particulars are a guide and act as information only. All our details are given in good faith and believed to be correct at the time of printing but they don't form part of an offer or contract. No Winkworth employee has authority to make or give any representation or warranty in relation to this property. All fixtures and fittings, whether fitted or not are deemed removable by the vendor unless stated otherwise and room sizes are measured between internal wall surfaces, including furnishings.