



FALLSBROOK ROAD, SW16
£400,000

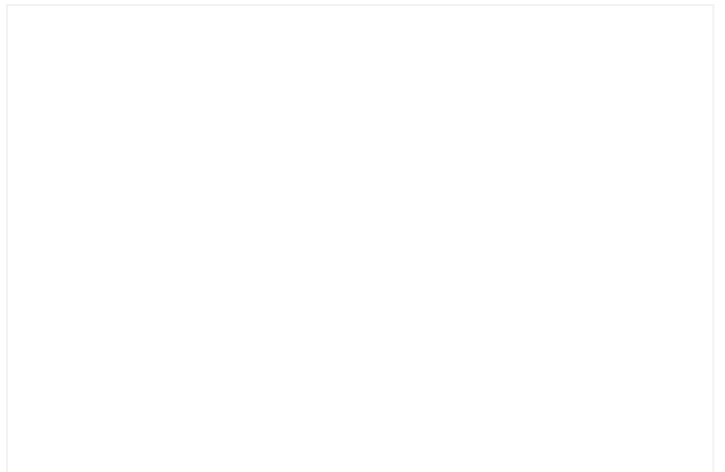
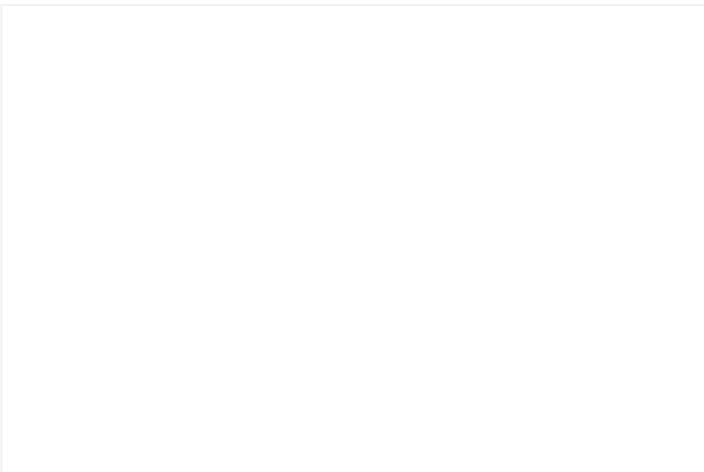
A TWO BEDROOM FIRST FLOOR MAISONETTE WITH A PRIVATE GARDEN.

Tooting | 020 8767 5221 | tooting@winkworth.co.uk



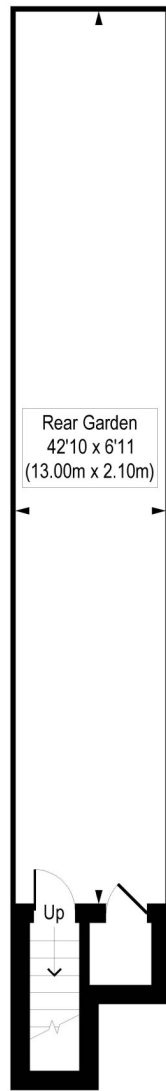
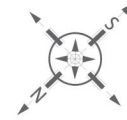
DESCRIPTION:

A characterful & charming two bedroom first floor garden maisonette, located on a quiet residential street within reach of Streatham Common & Streatham stations & local buses into Tooting. This property is offered to the market chain free.

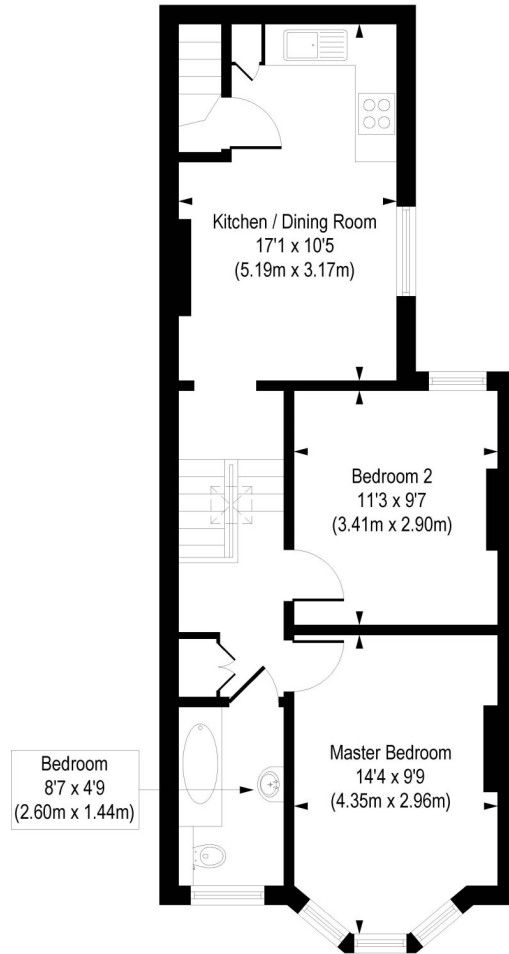


Fallsbrook Road, SW16

Approx. Gross Internal Floor Area 572 sq. ft / 53.10 sq. m



Ground Floor
Gross Internal
Floor Area 17 sq ft



First Floor
Gross Internal
Floor Area 555 sq ft

COMPLIANT WITH RICS CODE OF MEASURING PRACTICE. Floorplan is for illustrative purposes only and is not to scale. Every attempt has been made to ensure the accuracy of the floorplan shown, however all measurements, fixtures, fittings and data shown are an approximate interpretation for illustrative purposes only. Liability for errors, omissions or mis-statement through negligence or otherwise is hereby excluded.

This floorplan is for illustration purposes only and is not to scale. The position and size of doors, windows, appliances and other features are approximate.

Energy Efficiency Rating		Current	Potential
Most energy efficient - lower running costs			
(92-100)	A		
(81-91)	B		
(69-80)	C		74
(55-68)	D	61	
(39-54)	E		
(21-38)	F		
(1-20)	G		
Not energy efficient - higher running costs			
England, Scotland & Wales		EU Directive 2002/91/EC	