



STANLEY GARDENS, W11

£545 PER WEEK (£2,361.67 PCM) Furnished

A BEAUTIFULLY PRESENTED LOWER GROUND FLOOR FLAT IN THIS IMPRESSIVE PERIOD BUILDING LOCATED ON ONE OF THE MOST SOUGHT AFTER STREETS IN NOTTING HILL.

**2 Bedrooms, 1 Reception Room, 2 Bathrooms,
Flat/Apartment, Lower Ground Floor, Communal Gardens,
Furnished**



Notting Hill Sales | 0207 727 3227 | nottinghill@winkworth.co.uk

winkworth.co.uk

See things differently



DESCRIPTION:

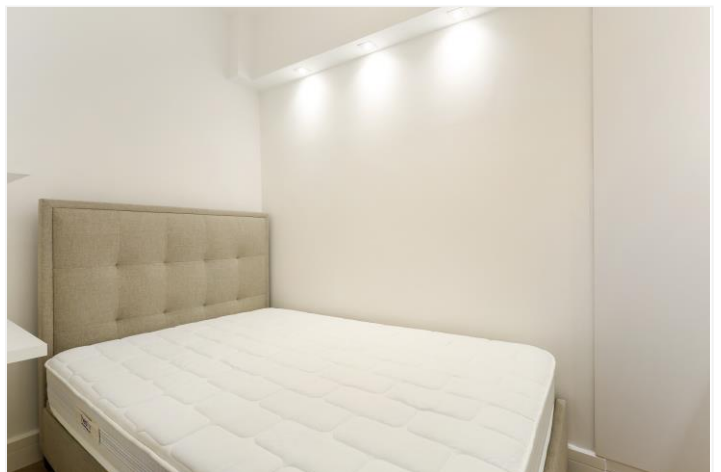
The property boasts a large open plan kitchen and living room with beautiful wooden flooring, spacious master bedroom with en-suite bathroom, a further bedroom and a separate bathroom. Furthermore, tenants have access to the fantastic communal gardens (charges may apply) behind. The flat is available furnished.

LOCATION:

Stanley Gardens is a prime address in Notting Hill which is lined with impressive stucco fronted buildings. It lies between Kensington Park Road and Ladbroke Grove, a stone's throw from the restaurants and boutiques of Westbourne Grove and an easy walk from the Central Line at Notting Hill Gate.

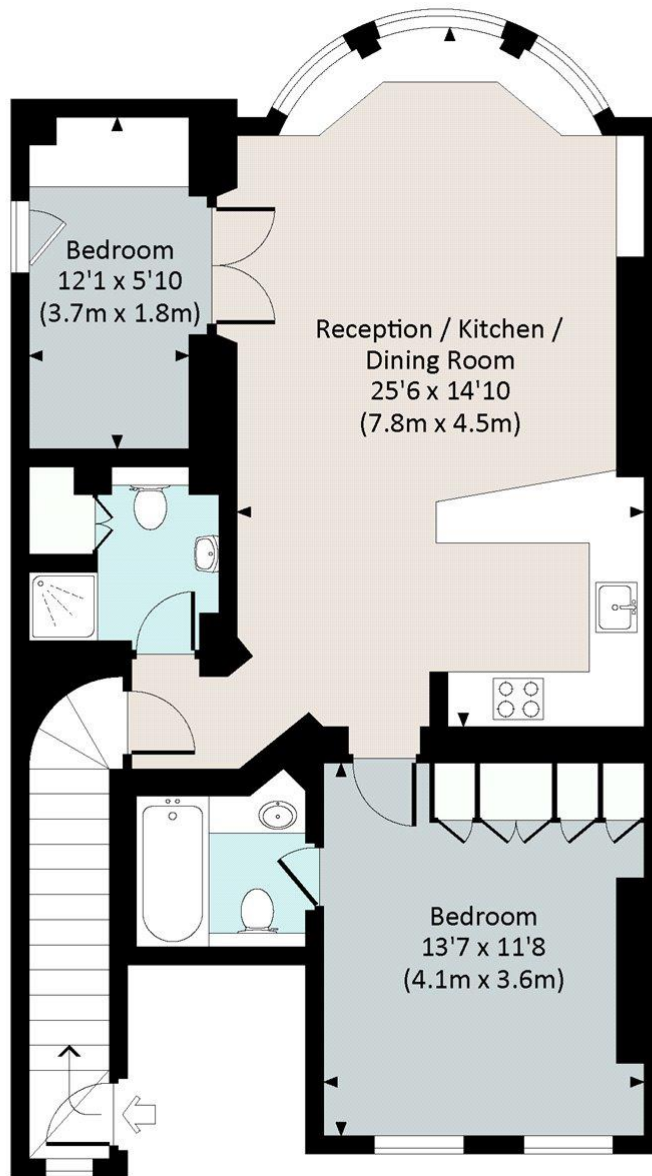
LOCAL AUTHORITY:

Royal Borough of Kensington and Chelsea



STANLEY GARDENS, W11

Approx. gross internal area
805 Sq Ft. / 74.8 Sq M.

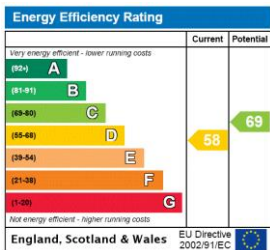


LOWER GROUND FLOOR



All measurements have been made in accordance with RICS Code of Measuring Practice which are approximate only and only for illustrative purposes. For the avoidance of doubt, Dowling Jones Design shall not be liable for any reliance on these measurements. © 2017 www.dowlingjones.com 020 7610 9933

This floorplan is for illustration purposes only and is not to scale. The position and size of doors, windows, appliances and other features are approximate.



Notting Hill Sales | 0207 727 3227 | nottinghill@winkworth.co.uk



winkworth.co.uk

See things differently

winkworth wishes to inform prospective buyers and tenants that these particulars are a guide and act as information only. All our details are given in good faith and believed to be correct at the time of printing but they don't form part of an offer or contract. No Winkworth employee has authority to make or give any representation or warranty in relation to this property. All fixtures and fittings, whether fitted or not are deemed removable by the vendor unless stated otherwise and room sizes are measured between internal wall surfaces, including furnishings.