



## Flat 6, Bedford Road, London, SW4

£1,250 p/m

We are pleased to present this first floor Victorian conversion one double bedroom furnished flat in good decorative order. Water and council tax are included in the rent.

Ideally located for the amenities of Clapham, close to Clapham North tube, Brixton and Abbeville Village.

Victorian conversion | First floor | One double bedroom | Open plan kitchen reception diner | Shower room | Storage | Furnished | Communal utility room | Available 9 December 2015 | Usual administration fees apply - please enquire within

# LOCATION

Bedford Road  
Corner of Sandmere Road

# DESCRIPTION

This first floor Victorian conversion comprises a large open plan kitchen-reception-diner (with electric hob, oven and under counter fridge with freezer box), a good size double bedroom, a shower room with WC, storage and a communal utility room with a washing machine and tumble dryer.

Water and council tax are included in the rent.

The property is furnished and available from 9 December 2015.

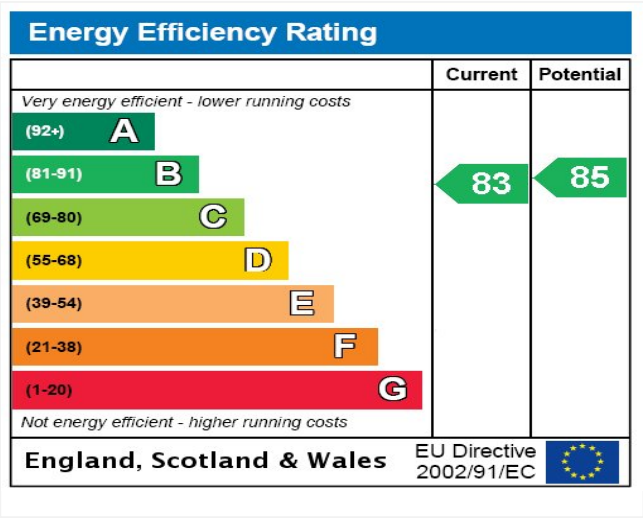
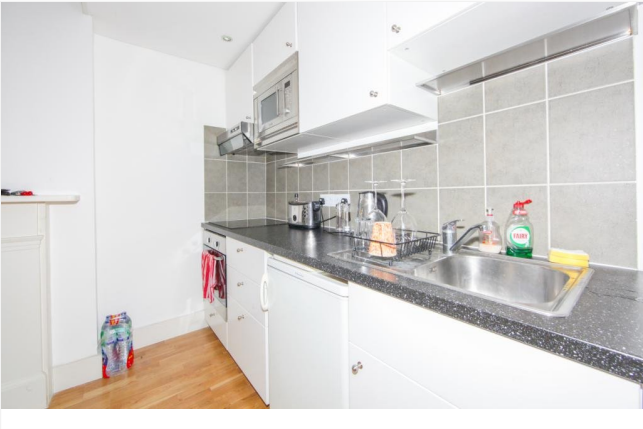
Usual administration fees apply - please enquire within.

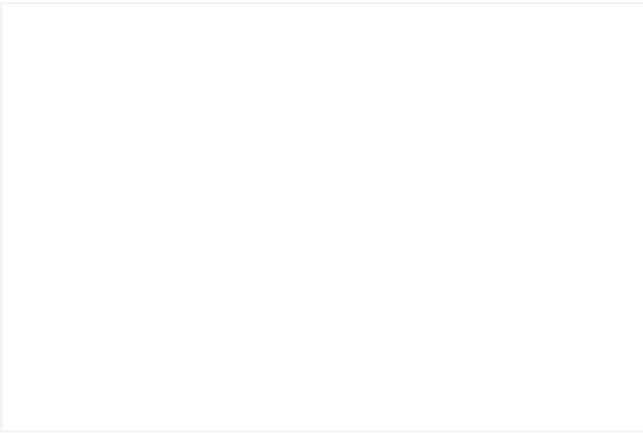
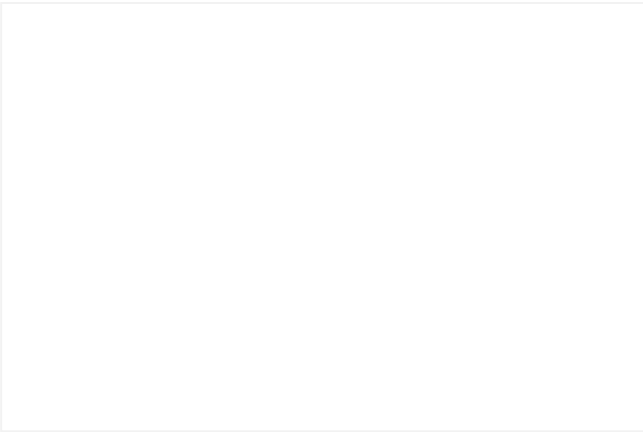
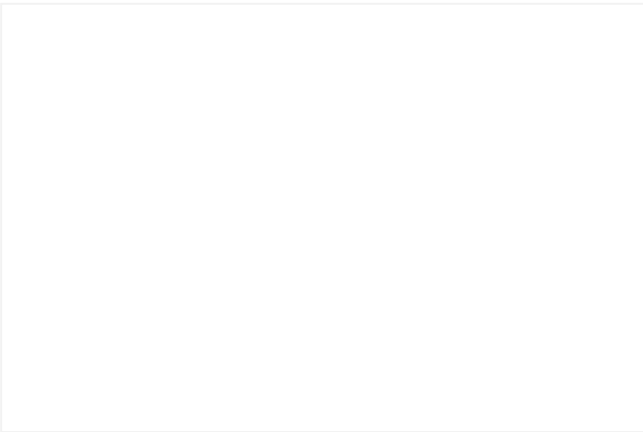
# LOCAL AUTHORITY

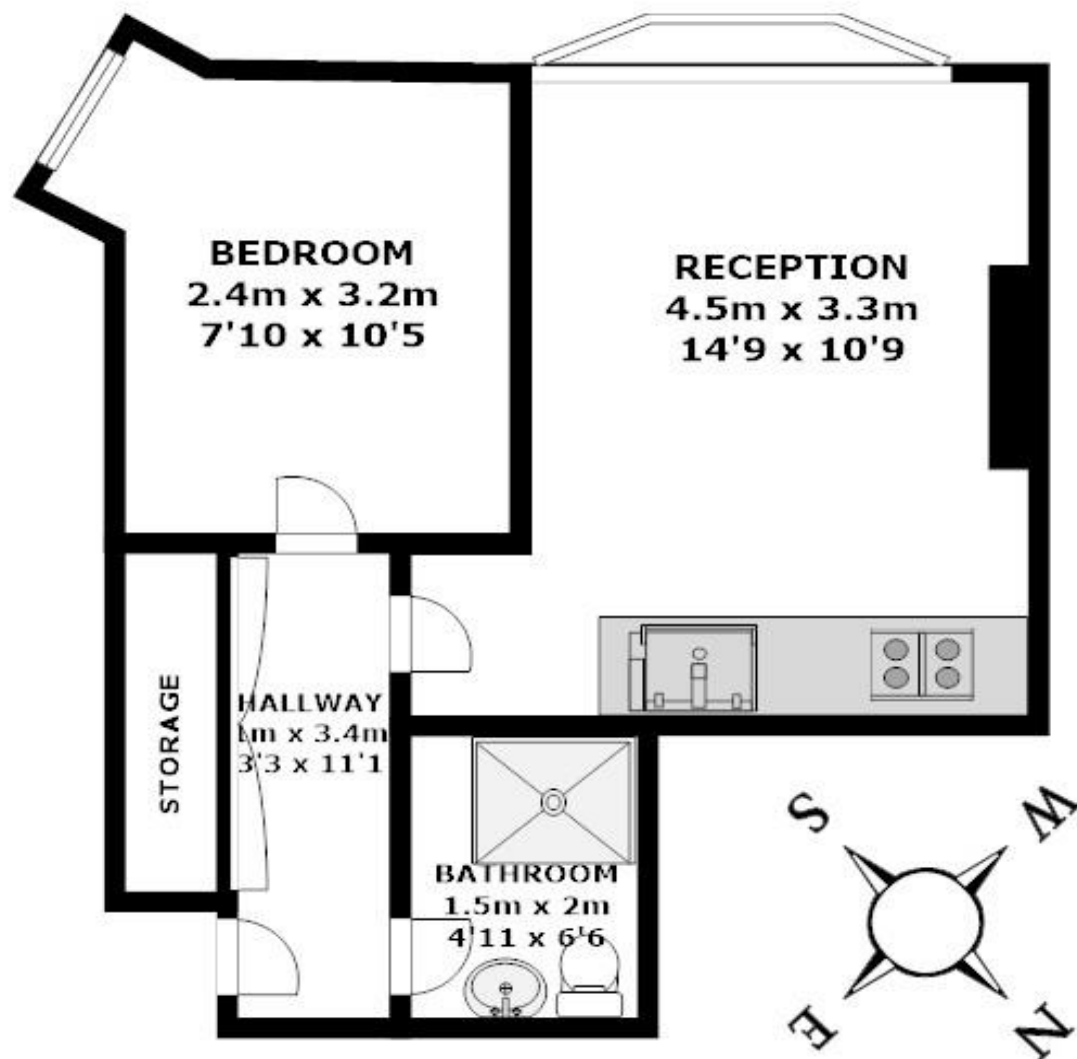
Lambeth

# DIRECTIONS

Clapham North tube  
Brixton







### 1ST FLOOR

**TOTAL APPROX. FLOOR AREA 312'15 SQ.FT (29 SQ.M)**

**Whilst every attempt has been made to ensure the accuracy of the floor plan contained here, measurements of doors, windows, rooms and any other items are approximates and no responsibility is taken for any error, omission, or miss-statement. This plan is for illustrative purposes only and should be used as such by any prospective purchaser. The service, systems and appliances shown have not been tested and no guarantee as to their operability or efficiency can be given**

This floorplan is for illustration purposes only and is not to scale. The position and size of doors, windows, appliances and other features are approximate.