



- **LIGHT-FILLED & AIRY**
- **KITCHEN DINER**
- **PRIVATE GARDEN**
- **FOUR SIZEABLE DOUBLE BEDROOMS**
- **TWO BATHROOMS**
- **CLOSE TO VARIOUS RELIGIOUS INSTITUTIONS**

ALEXANDRA ROAD, HENDON, NW4
OIRO £825,000 FREEHOLD

A FOUR-BEDROOM FAMILY HOME IN THE HEART OF HENDON

Hendon | 020 8202 1031 | hendon@winkworth.co.uk

Winkworth

for every step...

winkworth.co.uk



Welcome to this bright, airy, and stunning four-bedroom, two-bathroom family home, perfectly arranged over three spacious floors in the heart of Hendon, NW4. This beautifully presented property offers generous living spaces, ideal for modern family life, and is perfectly positioned to benefit from everything that the vibrant North London community has to offer. The ground floor features a welcoming reception and dining room, with wooden floors and air-conditioning. The heart of the home is a modern, eat-in kitchen, creating a highly sociable space, perfect for family meals. Doors from the kitchen open out to a private, well-maintained garden. A newly built, attractive outbuilding at the end of garden can be used as an office, gym or guest house.

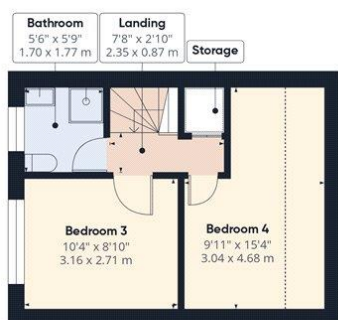
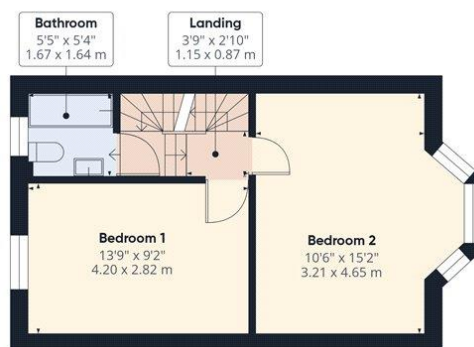


Winkworth

for every step...



Winkworth
for every step...



Winkworth

Approximate total area⁽¹⁾1175 ft²109.1 m²

Reduced headroom

45 ft²

4,2 m²

(1) Excluding balconies and terraces

Reduced headroom

Below 5 ft/1.5 m

Calculations reference the RICS IPMS 3C standard. Measurements are approximate and not to scale. This floor plan is intended for illustration only.

GIRAFFE360

This floorplan is for illustration purposes only and is not to scale. The position and size of doors, windows, appliances and other features are approximate.

Score	Energy rating	Current	Potential
92+	A		
81-91	B		83 B
69-80	C		
55-68	D	62 D	
39-54	E		
21-38	F		
1-20	G		

Hendon | 020 8202 1031 | hendon@winkworth.co.uk

Winkworth

for every step...

winkworth.co.uk

Winkworth wishes to inform prospective buyers and tenants that these particulars are a guide and act as information only. All our details are given in good faith and believed to be correct at the time of printing but they don't form part of an offer or contract. No Winkworth employee has authority to make or give any representation or warranty in relation to this property. All fixtures and fittings, whether fitted or not are deemed removable by the vendor unless stated otherwise and room sizes are measured between internal wall surfaces, including furnishes.