



**LANGTHORNE LODGE, LONDON, SW2**  
**£1,650 PER MONTH UNFURNISHED**

## GROUND FLOOR TWO DOUBLE BEDROOM FLAT SET WITHIN A PRIVATE GATED DEVELOPMENT NEXT TO BROCKWELL PARK

**Herne Hill** | 0207 501 8950 | [hernehill@winkworth.co.uk](mailto:hernehill@winkworth.co.uk)

**Winkworth**

Tenant Fees Apply: Details of fees for tenant referencing, tenancy agreement admin fees and renewal fees are available on the Winkworth website and the link can be found with the displayed rent for the property. Tenants should ensure they are fully conversant with these upfront fees and other costs that are involved at the outset of the tenancy before making an offer to rent and your local Winkworth office will provide written details upon request.

[winkworth.co.uk](http://winkworth.co.uk)

See things differently





### DESCRIPTION:

We are pleased to offer this ground floor, spacious, two double bedroom flat with two bathrooms set in a private gated development situated next to Brockwell Park and within walking distance of Brixton and all its amenities and transport links.

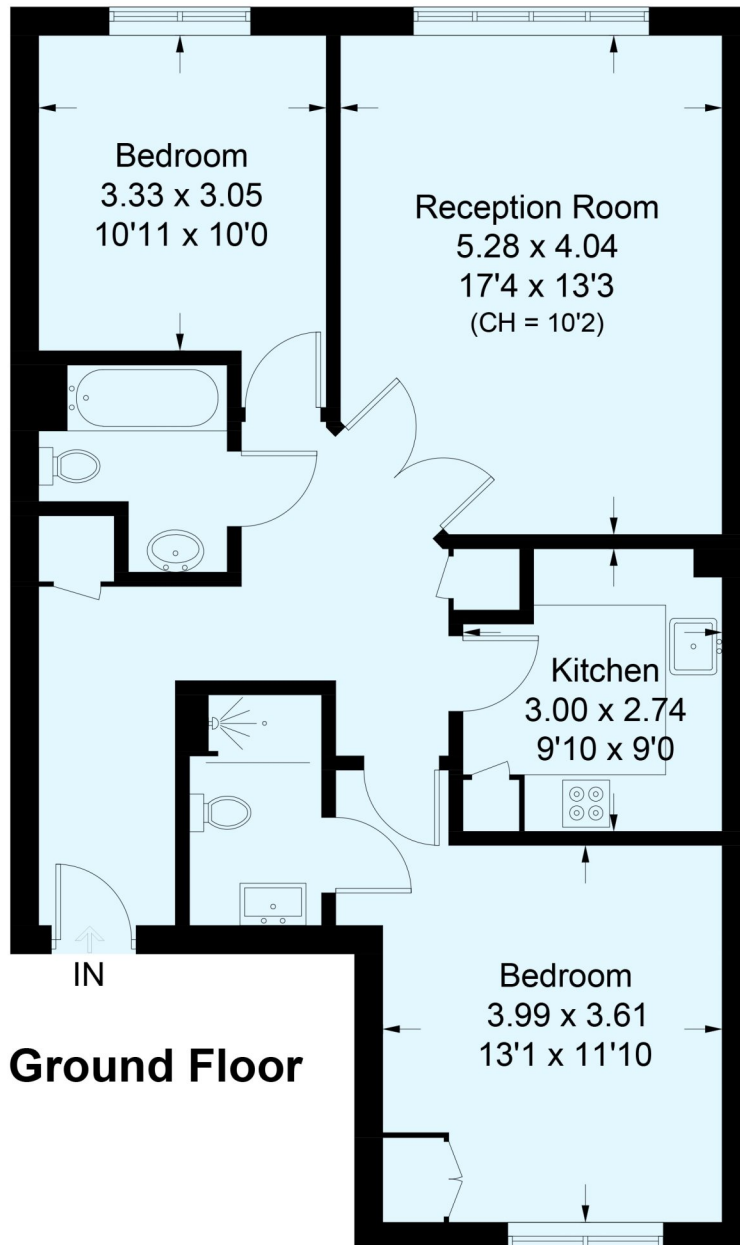
### ACCOMMODATION

Long Let, 2 Bedrooms, 1 Reception Room, 2 Bathrooms, Flat/Apartment, End of Terrace, Ground Floor, Off Street Parking, Modern, Town/City, Unfurnished, 861 Approx Sq Ft



## Langthorne Lodge, Charles Haller Street, SW2

Approximate Gross Internal Area  
80 sq m / 861 sq ft



### Ground Floor

This plan is for layout guidance only. Not drawn to scale unless stated. Windows and door openings are approximate. Whilst every care is taken in the preparation of this plan, please check all dimensions, shapes and compass bearings before making any decisions reliant upon them. (ID545805)

This floorplan is for illustration purposes only and is not to scale. The position and size of doors, windows, appliances and other features are approximate.

Herne Hill | 0207 501 8950 | hernehill@winkworth.co.uk

**Winkworth**

*winkworth.co.uk*

See things differently

Winkworth wishes to inform prospective buyers and tenants that these particulars are a guide and act as information only. All our details are given in good faith and believed to be correct at the time of printing but they don't form part of an offer or contract. No Winkworth employee has authority to make or give any representation or warranty in relation to this property. All fixtures and fittings, whether fitted or not are deemed removable by the vendor unless stated otherwise and room sizes are measured between internal wall surfaces, including furnishings.