



CHERITON COURT, BERKSHIRE, RG1 6BQ
£1,095 PER MONTH FURNISHED

ONE BEDROOM FIRST FLOOR APARTMENT IN
READING TOWN CENTRE. AVAILABLE NOW.

Reading | 0118 4022 300 | reading@winkworth.co.uk

Winkworth

for every step...

winkworth.co.uk



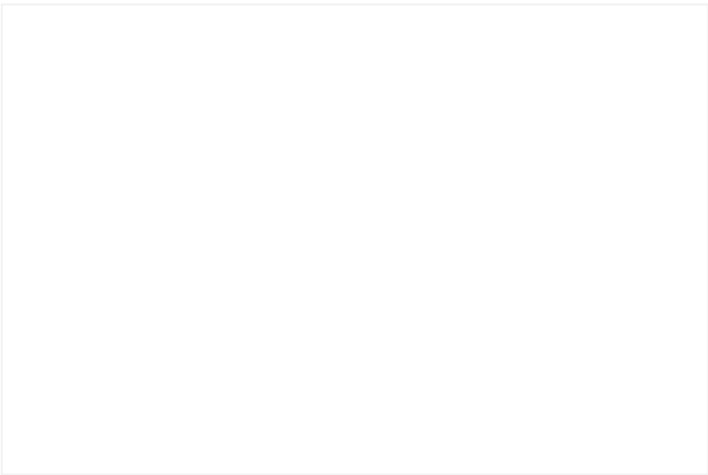
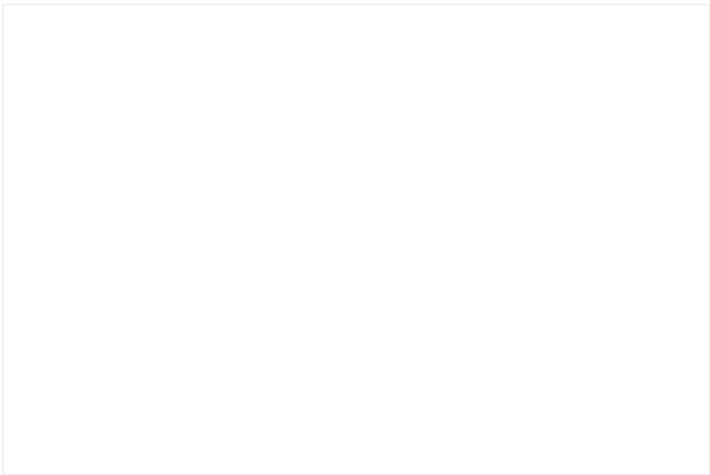
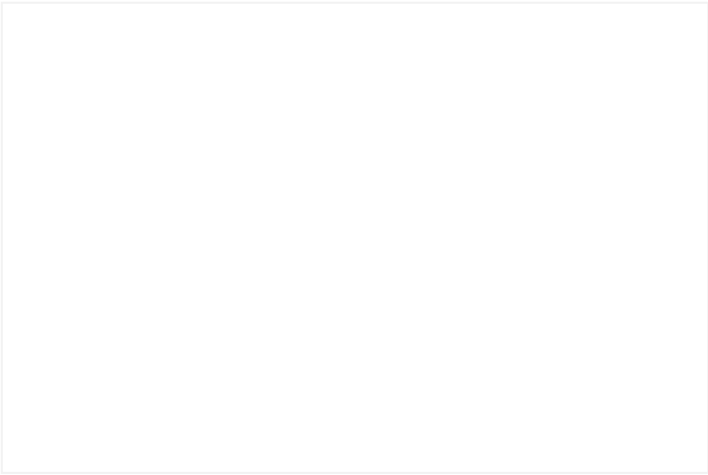
DESCRIPTION:

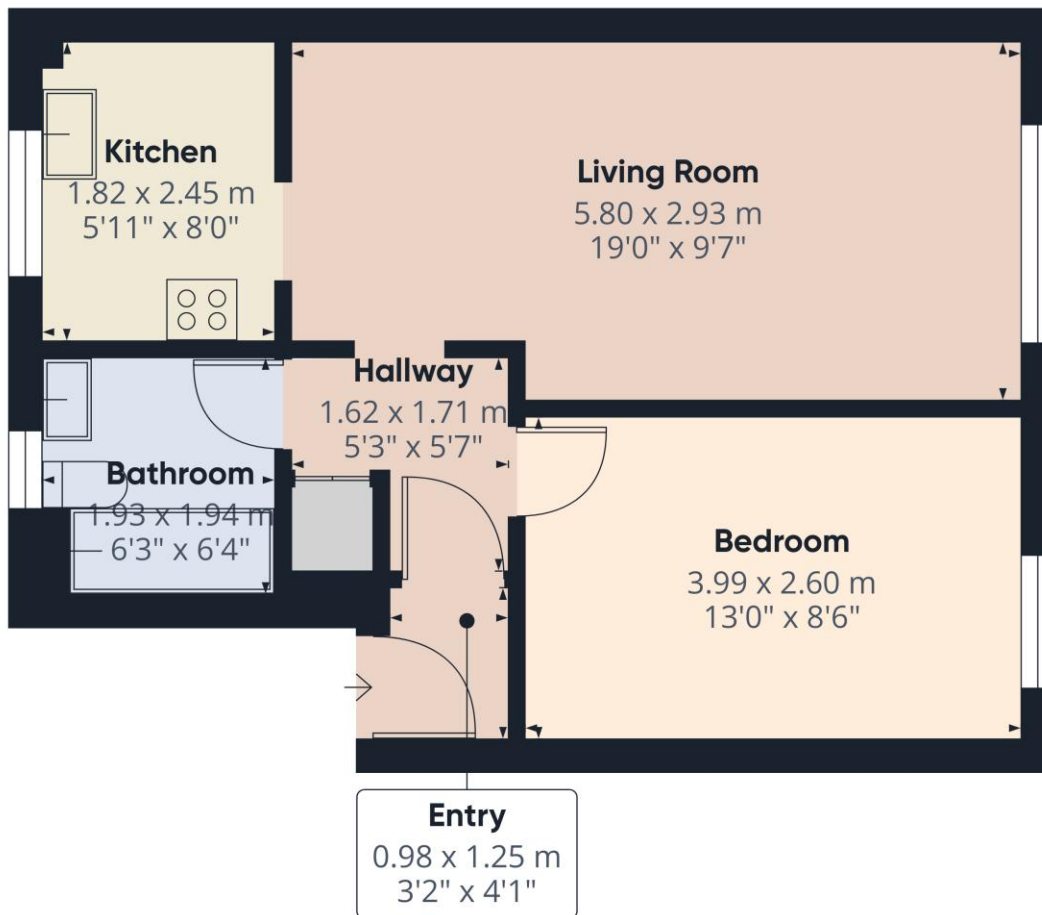
One bedroom first floor apartment located in Reading town centre, a short walk from Reading train station. Accommodation comprises reception room, separate kitchen, double bedroom and bathroom. Additional benefits include residents parking, garage and use of communal gardens. Available now. Furnished.

AT A GLANCE

- First floor one bedroom flat
- Town centre location
- Council tax band B
- Residents parking & garage
- Available now
- Furnished







Winkworth

Approximate total area⁽¹⁾
40 m²
431 ft²

(1) Excluding balconies and terraces

Calculations reference the RICS IPMS 3C standard. Measurements are approximate and not to scale. This floor plan is intended for illustration only.

GIRAFFE 360

This floorplan is for illustration purposes only and is not to scale. The position and size of doors, windows, appliances and other features are approximate.

Score	Energy rating	Current	Potential
92+	A		
81-91	B		
69-80	C	74 C	75 C
55-68	D		
39-54	E		
21-38	F		
1-20	G		

Deposit: £1,263.46

Holding Deposit: £252.69

Council Tax Band: B

Where no figures are shown, we have been unable to ascertain the information. All figures that are shown were correct at the time of printing.

Reading | 0118 4022 300 | reading@winkworth.co.uk

Winkworth

for every step...

winkworth.co.uk

Winkworth wishes to inform prospective buyers and tenants that these particulars are a guide and act as information only. All our details are given in good faith and believed to be correct at the time of printing but they don't form part of an offer or contract. No Winkworth employee has authority to make or give any representation or warranty in relation to this property. All fixtures and fittings, whether fitted or not are deemed removable by the vendor unless stated otherwise and room sizes are measured between internal wall surfaces, including furnishings.