



BARNSBURY PARK, LONDON, N1
£500,000 LEASEHOLD

**A WONDERFUL ONE BEDROOM FLAT
LOCATED ON A BEAUTIFUL TREE LINED
STREET IN THE HEART OF BARNSBURY.**

Islington | 0207 354 2480 | islington@winkworth.co.uk

Winkworth

winkworth.co.uk

See things differently



DESCRIPTION:

A truly amazing one bedroom apartment set across the ground floor of this charming Grade II listed building in Barnsbury. The property is flooded with natural light, has high ceilings and sash windows. Accommodation comprises of a master bedroom, a bathroom, a well-equipped kitchen & reception room is located to the rear of the flat overlooking the communal gardens. The property further benefits from being offered to the market chain free.

Barnsbury Park is located in the heart of Barnsbury and is extremely well connected, just moments from Highbury & Islington Station (Victoria line, Overground and National Rail) and within easy reach of Caledonian Road Station (Piccadilly line) alongside several great bus routes taking you into the City and West End. The restaurants, bars and boutiques shops on Upper Street are all only a short distance away as are open spaces of Highbury Fields.

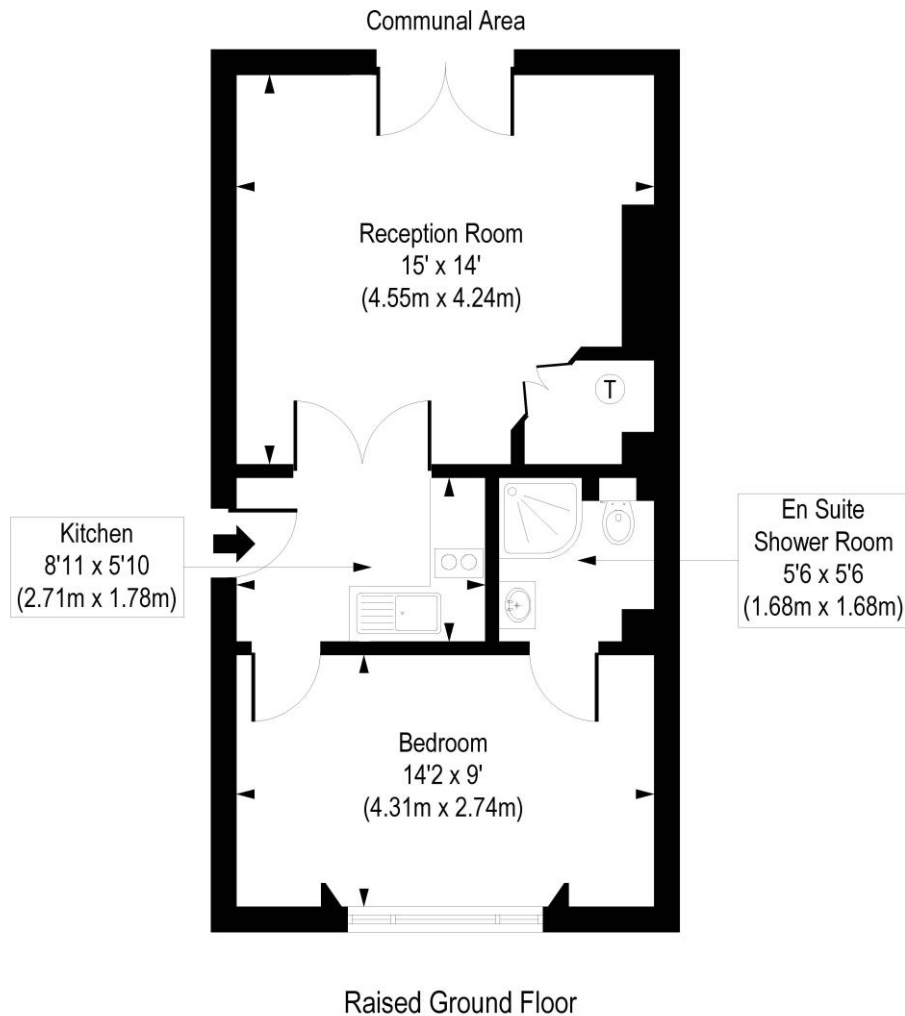
Winkworth



Winkworth

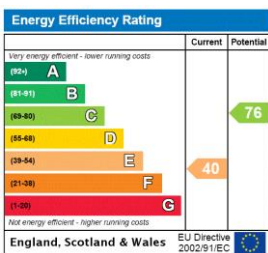
Barnsbury Park, N1

Approx. Gross Internal Floor Area 463 sq. ft / 43.05 sq. m



COMPLIANT WITH RICS CODE OF MEASURING PRACTICE. Floorplan is for illustrative purposes only and is not to scale. Every attempt has been made to ensure the accuracy of the floorplan shown, however all measurements, fixtures, fittings and data shown are an approximate interpretation for illustrative purposes only. Liability for errors, omissions or mis-statement through negligence or otherwise is hereby excluded.

This floorplan is for illustration purposes only and is not to scale. The position and size of doors, windows, appliances and other features are approximate.



Islington | 0207 354 2480 | islington@winkworth.co.uk



winkworth.co.uk

See things differently

Winkworth wishes to inform prospective buyers and tenants that these particulars are a guide and act as information only. All our details are given in good faith and believed to be correct at the time of printing but they don't form part of an offer or contract. No Winkworth employee has authority to make or give any representation or warranty in relation to this property. All fixtures and fittings, whether fitted or not are deemed removable by the vendor unless stated otherwise and room sizes are measured between internal wall surfaces, including furnishings.