



Kingfisher Place, Berkshire, RG1 8BQ

£1,350 per month *Furnished*



One bedroom ground floor riverside apartment located within a short walk to Reading town centre and mainline train station. The property comprises an open plan lounge/diner with modern kitchen, spacious double bedroom with built in wardrobes, shower room and a private garden overlooking the River Thames. Benefits include one allocated parking space and a private entrance. Available 20th November 2025. Furnished.

KEY FEATURES

- One bedroom apartment
- Private garden overlooking the River Thames
- One allocated parking space
- Council tax band C
- Available 20th November
- Furnished

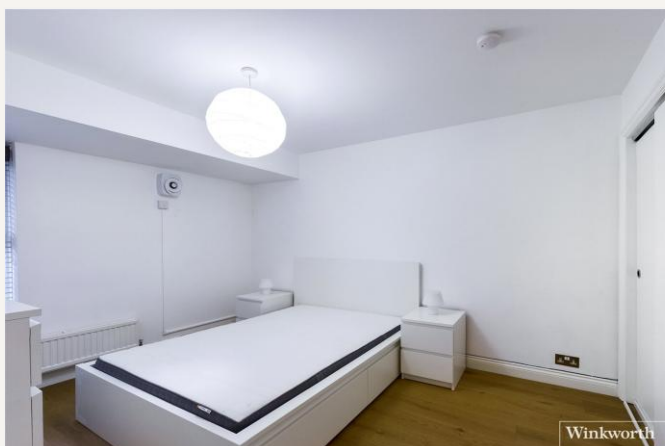


Reading

0118 4022 300 | reading@winkworth.co.uk

Winkworth

for every step...



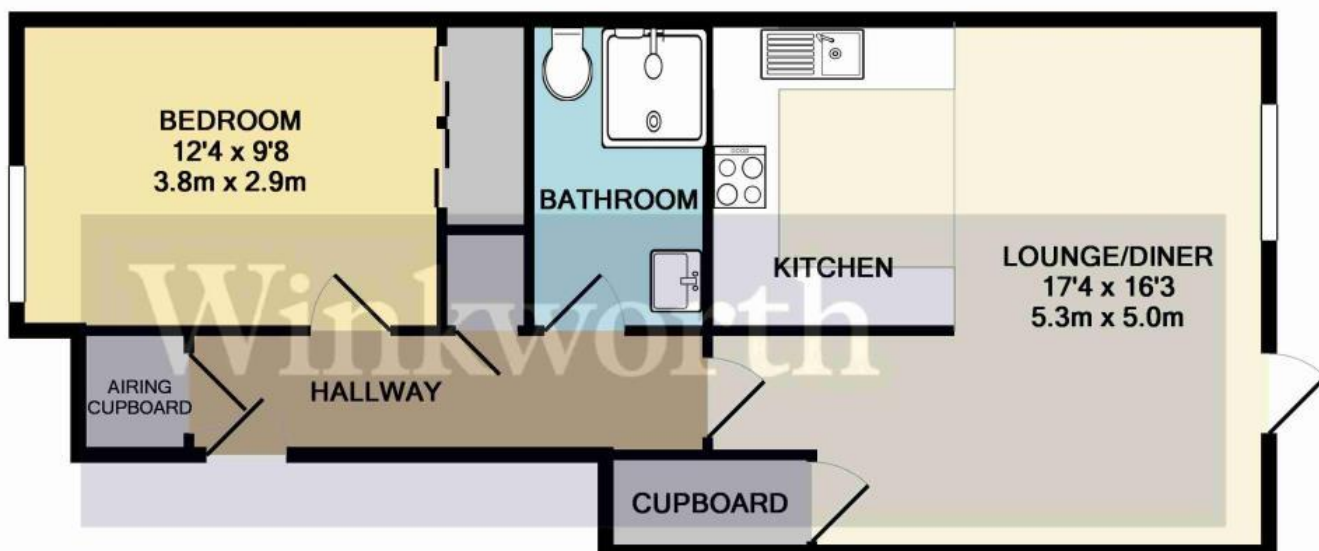


MATERIAL INFO

Deposit: £1,557.69

Holding Deposit: £311.53

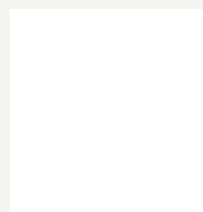
Council Tax Band: C



Whilst every attempt has been made to ensure the accuracy of the floor plan contained here, measurements of doors, windows, rooms and any other items are approximate and no responsibility is taken for any error, omission, or mis-statement. This plan is for illustrative purposes only and should be used as such by any prospective purchaser. The services, systems and appliances shown have not been tested and no guarantee as to their operability or efficiency can be given
Made with Metropix ©2016

Energy Efficiency Rating		
	Current	Potential
Very energy efficient - lower running costs		
(92+) A		
(81-91) B		
(69-80) C	80	80
(55-68) D		
(39-54) E		
(21-38) F		
(1-20) G		
Not energy efficient - higher running costs		
England, Scotland & Wales	EU Directive 2002/91/EC	

For more information, scan the QR code or visit the link below



<https://www.winkworth.co.uk/rent/property/REA160034>

Where no figures are shown, we have been unable to ascertain the information. All figures that are shown were correct at the time of printing.

Reading

0118 4022 300 | reading@winkworth.co.uk

Winkworth

for every step...

Winkworth wishes to inform prospective buyers and tenants that these particulars are a guide and act as information only. All our details are given in good faith and believed to be correct at the time of printing but they don't form part of an offer or contract. No Winkworth employee has authority to make or give any representation or warranty in relation to this property. All fixtures and fittings, whether fitted or not are deemed removable by the vendor unless stated otherwise and room sizes are measured between internal wall surfaces, including furnishings.