



**VICTORIA DRIVE, SW19**  
**£649,950 FREEHOLD**

**DESCRIPTION:**

A rare opportunity to acquire a unique freehold house which is coming to the market for the first time in over 35 years. In need of updating this property offers generous ground floor accommodation which can be extended further subject to the local authority planning consents. Benefiting from three bedrooms. A family bathroom. Recently refurbished kitchen. Ground floor WC and sizeable rear garden. Also having the advantage of off street parking for 2-3 vehicles. No onward chain.

Southfields | 020 8877 1000 | southfields@winkworth.co.uk

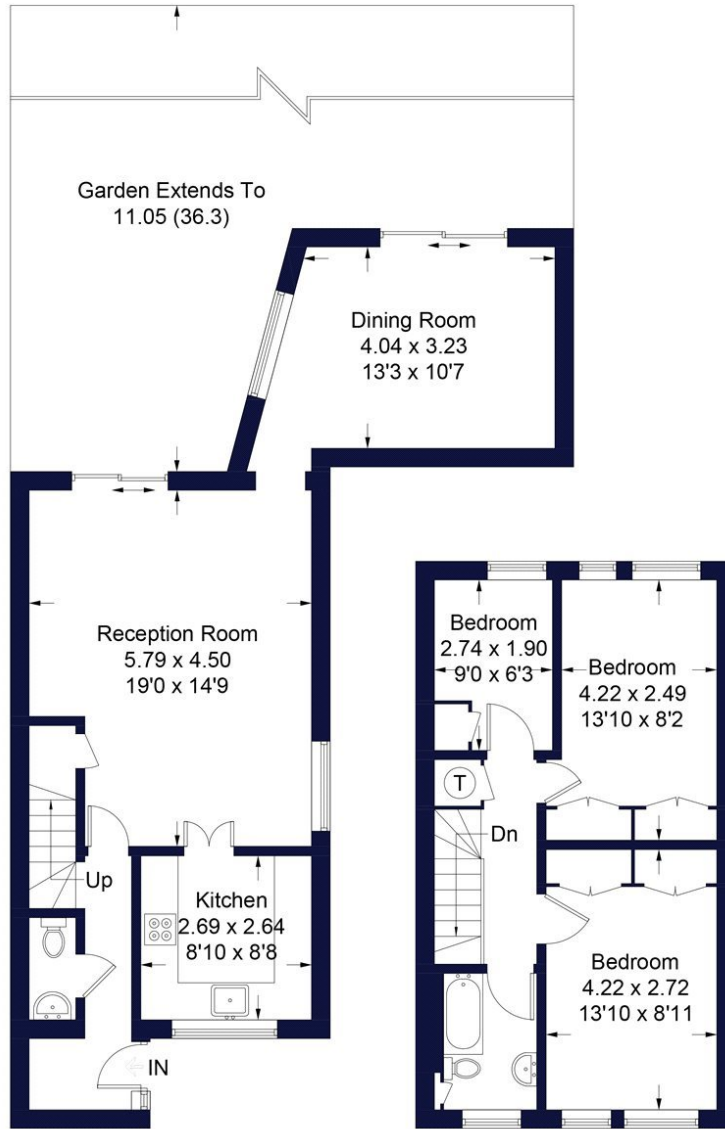




# Victoria Drive

**Winkworth**

Approximate Gross Internal Area Total = 95.9 sq m / 1032 sq ft



**Ground Floor**  
Sq m 57 / Sq ft 613

**First Floor**  
Sq m 38.9 / Sq ft 419

Illustration for identification purposes only, measurements are approximate, not to scale. FloorplansUsketch.com © 2018 (ID400314)

This floorplan is for illustration purposes only and is not to scale. The position and size of doors, windows, appliances and other features are approximate.

Southfields | 020 8877 1000 | southfields@winkworth.co.uk

**Winkworth**

*winkworth.co.uk*

See things differently

Winkworth wishes to inform prospective buyers and tenants that these particulars are a guide and act as information only. All our details are given in good faith and believed to be correct at the time of printing but they don't form part of an offer or contract. No Winkworth employee has authority to make or give any representation or warranty in relation to this property. All fixtures and fittings, whether fitted or not are deemed removable by the vendor unless stated otherwise and room sizes are measured between internal wall surfaces, including furnishings.