



FLAT 4 DISCOVERY COURT

CATHERINE ROAD NEWBURY RG14 7NS

A bright and airy modern ground floor apartment close to the town centre and railway station.

The flat has a hall, open plan living area and fully fitted kitchen with appliances. There are two double bedrooms both with built in wardrobes and a bathroom with bath and separate shower cubicle.

There is also one off road parking space.

Situated in the heart of Newbury within walking distance of Sainsbury's superstore, Park Way shopping centre, Pure Gym and Northbrook Street.

EPC C
Council Tax Band C



Winkworth

AT A GLANCE

- 651 Sqft / 60 Sqmt
- *NO ONWARD CHAIN*
- Two double bedrooms
- Bathroom with shower cubicle
- Open plan kitchen/living area
- UPVC double glazing
- Allocated Parking Space
- Close to Train Station and Town Centre

UTILITIES

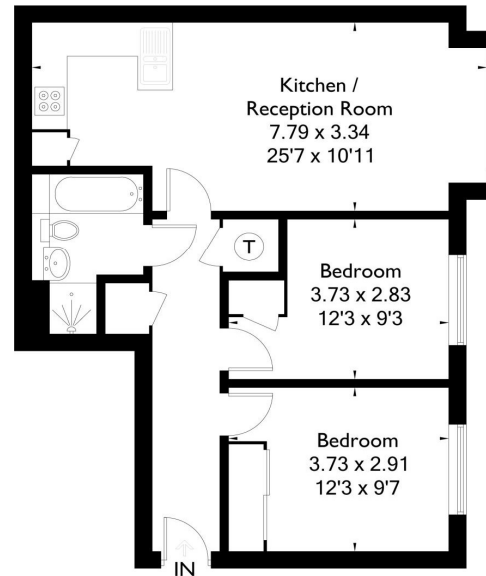
Electric Heating
Mobile Signal and Broadband: Full coverage

DIRECTIONS

What3words:///first.incomes.chins

Catherine Road, Newbury, RG14

Approximate Gross Internal Area = 60.5 sq m / 651 sq ft



Ground Floor

Floorplan © 2014
0845 634080 Ref: 141515
This plan is for layout guidance only.
Drawn in accordance with
RICS guidelines. Not drawn to
scale unless stated. Windows &
door openings are approximate.
Whilst every care is taken in the
preparation of this plan, please check
all dimensions, shapes & compass
bearings before making any
decisions reliant upon them.



Newbury Office

43 Northbrook Street, Newbury, Berkshire RG14 1DT
01635 552552 | newbury@winkworth.co.uk

winkworth.co.uk/newbury

Winkworth

See things differently.