



VEGA HOUSE, HEMMING STREET, LONDON, E1
£600,000 LEASEHOLD

MODERN TWO-BEDROOM APARTMENT WITH LARGE PRIVATE BALCONY

Shoreditch | 020 7749 7650 | shoreditch@winkworth.co.uk

Winkworth

winkworth.co.uk

See things differently



DESCRIPTION:

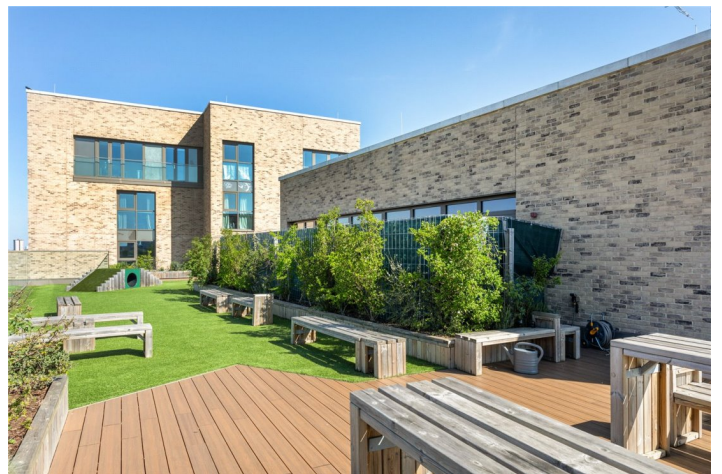
This modern two-bedroom, one-bathroom apartment spans 679 sq ft and showcases a stylish, contemporary finish throughout.

Situated on the first floor, the property features a spacious west-facing balcony accessible from both the living area and the master bedroom, allowing plenty of natural light throughout. The apartment also comprises two large bedrooms, a three-piece family bathroom, and a fully fitted kitchen.

Vega House also benefits from cycle storage, secure fob access and a communal private roof terrace offering amazing views of the London skyline.

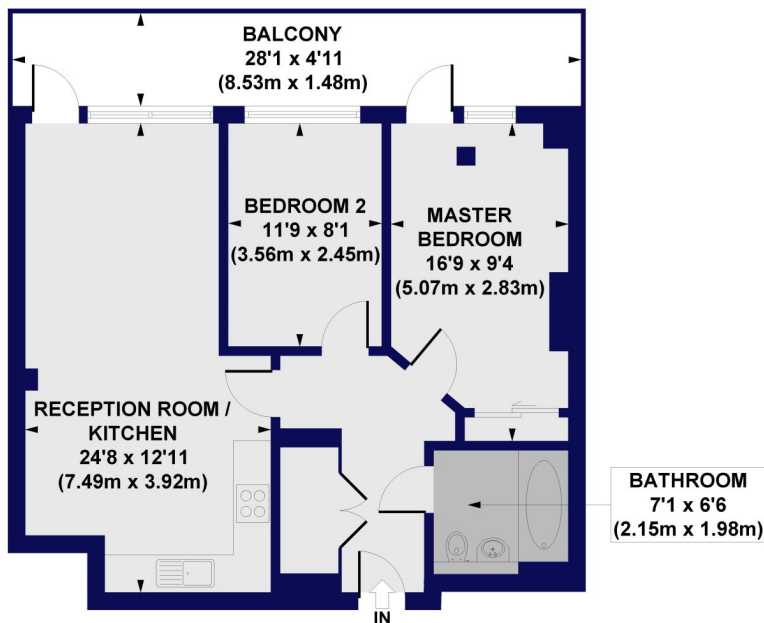
The property is in an ideal location with an array of local amenities on Bethnal Green Road as well the boutique shops, cafes, bars and restaurants on Brick Lane, Spitalfields Market, Redchurch Street, Shoreditch High Street, Columbia Road, and Broadway Market. You have fantastic transport links with the new Elizabeth line only being 0.5 miles away at Whitechapel Station, offering easy access to Bond Street, Tottenham Court Road, Canary Wharf and Heathrow Airport. Also in close proximity are Bethnal Green and Shoreditch High Street overground stations, as well as Bethnal Green, Liverpool Street, Aldgate and Aldgate East underground stations.

Winkworth



Winkworth

Vega House, Hemming Street, E1
Approx. Gross Internal Floor Area 679 sq. ft / 63.11 sq. m



FIRST FLOOR

All measurements of walls, doors, windows, fittings and appliances, including their size and location, are shown as standard sizes and do not constitute any warranty or representation by the seller, their agent or CP Creative. Any intending purchaser must satisfy himself by inspection or otherwise as to the correctness of the information contained in these plans. This plan is for illustrative purposes only and should be used as such by any prospective purchasers.

Winkworth

This floorplan is for illustration purposes only and is not to scale. The position and size of doors, windows, appliances and other features are approximate.

Energy Efficiency Rating		
	Current	Potential
Very energy efficient - lower running costs		
(92+) A		
(81-91) B	84	84
(69-80) C		
(55-68) D		
(39-54) E		
(21-38) F		
(1-20) G		
Not energy efficient - higher running costs		
England, Scotland & Wales		
EU Directive 2002/91/EC		

Shoreditch | 020 7749 7650 | shoreditch@winkworth.co.uk

Winkworth

winkworth.co.uk

See things differently

Winkworth wishes to inform prospective buyers and tenants that these particulars are a guide and act as information only. All our details are given in good faith and believed to be correct at the time of printing but they don't form part of an offer or contract. No Winkworth employee has authority to make or give any representation or warranty in relation to this property. All fixtures and fittings, whether fitted or not are deemed removable by the vendor unless stated otherwise and room sizes are measured between internal wall surfaces, including furnishings.