



CRYSTAL PALACE PARK ROAD, SE26
£1,950 PER MONTH FURNISHED

A BEAUTIFULLY PRESENTED, TWO BEDROOM FIRST FLOOR VICTORIAN CONVERSION FLAT

Crystal Palace | 02038693222 | crystalpalace@winkworth.co.uk

Winkworth

for every step...

winkworth.co.uk



DESCRIPTION:

Winkworth is delighted to offer this stunning, two double bedroom first floor flat to rent.

The property is situated on the first floor of this well-presented Victorian conversion and comprises entrance hallway, modern fitted bathroom with freestanding bath, spacious double bedroom, reception room, separate contemporary shaker style kitchen and second smaller double bedrooms. There is access to a well-maintained communal garden to the rear.

The property further benefits from high ceilings and period features, is offered furnished and available from mid-July.

The property is perfectly situated for easy access to Sydenham, Penge West and Crystal Palace stations and moments away from the vast Crystal Palace Park.

Rent: £1,950pm

Deposit: £2,250 (5 weeks rent)

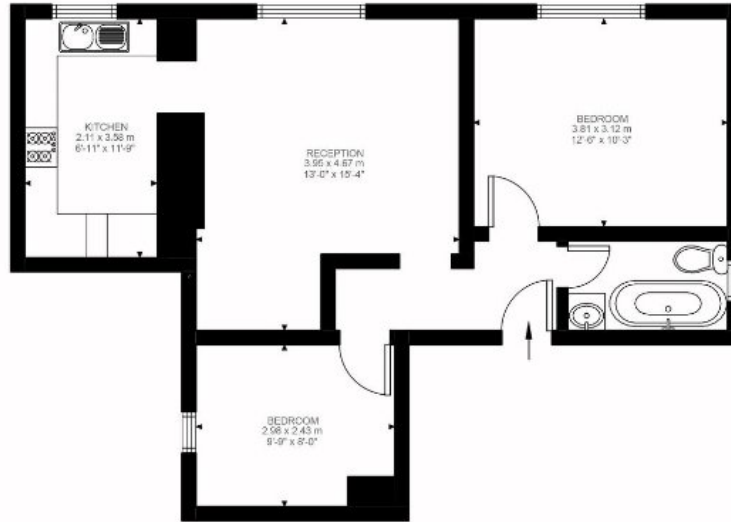
Bromley Council Tax Band C: £1,733.07pa

AT A GLANCE

- Two double bedrooms
- First floor flat
- Modern kitchen & bathroom
- High ceilings & period features
- Communal garden
- Furnished
- Available mid-July







First Floor
589 ft²

Park Road, SE26
Approximate Gross Internal Area
54.71 SQ.M / 589 SQ.FT

Illustration for identification purposes only. Not to scale.
Floor Plan Drawn According To RICS Guidelines.

This floorplan is for illustration purposes only and is not to scale. The position and size of doors, windows, appliances and other features are approximate.

Deposit: £0.00

Holding Deposit:

Council Tax Band:

Where no figures are shown, we have been unable to ascertain the information. All figures that are shown were correct at the time of printing.

Energy Efficiency Rating		Current	Potential
Very energy efficient - lower running costs			
(92)	A		
(81-91)	B		
(69-80)	C	75	75
(55-68)	D		
(39-54)	E		
(21-58)	F		
(1-20)	G		
Not energy efficient - higher running costs			
England, Scotland & Wales		EU Directive 2002/91/EC	



Crystal Palace | 02038693222 | crystalpalace@winkworth.co.uk

for every step...

winkworth.co.uk

Winkworth wishes to inform prospective buyers and tenants that these particulars are a guide and act as information only. All our details are given in good faith and believed to be correct at the time of printing but they don't form part of an offer or contract. No Winkworth employee has authority to make or give any representation or warranty in relation to this property. All fixtures and fittings, whether fitted or not are deemed removable by the vendor unless stated otherwise and room sizes are measured between internal wall surfaces, including furnishings.