

Lower Sloane Street, SW1W
£1,150,000 SHARE OF FREEHOLD

1  1  1 



Winkworth Knightsbridge
020 7589 6616 | knightsbridge@winkworth.co.uk

Winkworth

for every step...

Charming period apartment in Chelsea, offering timeless elegance and a prime location moments from Sloane Square

PROPERTY INFORMATION

Situated on the second floor of a beautiful period building, this spacious one-bedroom apartment offers classic elegance in the heart of Chelsea.

Spanning 671 sq ft, the property benefits from high ceilings, beautiful natural light, and a peaceful rear aspect, all within a setting of refined

architectural detail. The building also benefits from established and well kept west-facing communal gardens to the rear.

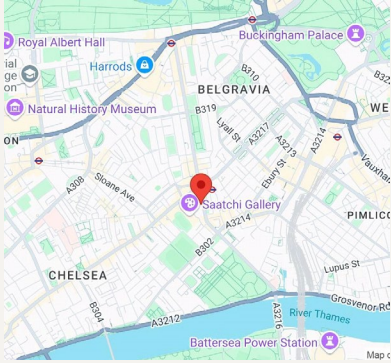
KEY FEATURES

- 1 bedrooms
- 1 reception room
- 1 bathrooms
- 671 Square Feet
- Resident Parking
- Communal Gardens









FINER DETAILS

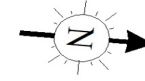
- 1 bedrooms
- 1 reception room
- 1 bathrooms
- 671 Square Feet
- Resident Parking
- Communal Gardens

Score	Energy rating	Current	Potential
92+	A		
81-91	B		
69-80	C		
55-68	D		61 D
39-54	E	48 E	
21-38	F		
1-20	G		

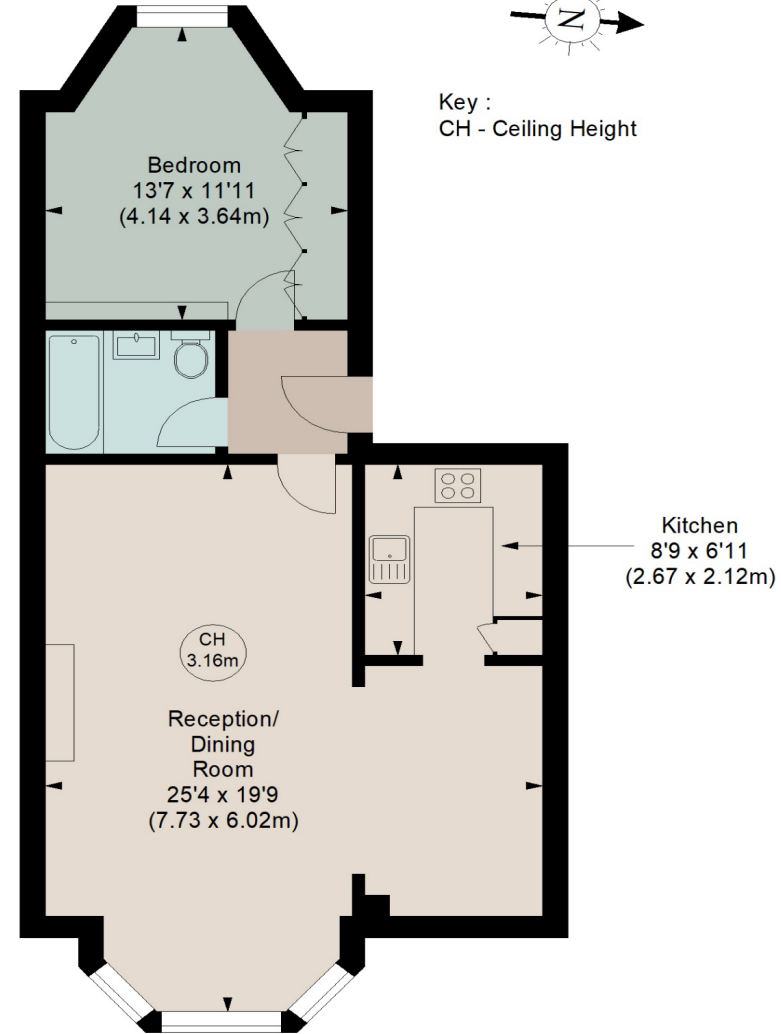
LOWER SLOANE STREET, SW1W

Approximate gross internal area

671 sq ft / 62.34 sq m



Key :
CH - Ceiling Height



SECOND FLOOR

Although every attempt has been made to ensure accuracy, all measurements are approximate.
This floorplan is for illustrative purposes only and not to scale.
Measured in accordance with RICS standards.



Winkworth Knightsbridge
020 7589 6616 | knightsbridge@winkworth.co.uk

Winkworth

for every step...