



Earls Court Square, Earls Court, London, SW5

£675 per week* / £2,925 per month – Unfurnished

A wonderfully light two bedroom, two bathroom flat located on the raised ground floor of this period building.

2 Bedrooms | 1 Reception Room | 2 Bathrooms | Ground Floor Flat | 624 Approx sq ft | EPC: D

APPLICANT FEES MAY BE APPLICABLE
HOLDING DEPOSIT OF 1 WEEK'S RENT
SECURITY DEPOSIT OF 5 WEEKS' RENT
PROPERTY NOT SUITABLE FOR SHARERS

Winkworth

winkworth.co.uk

for every step...



DESCRIPTION

This property benefits wonderfully high ceilings and wooden floors throughout. The flat consists of a well-proportioned living room, separate fully-fitted kitchen, master bedroom with excellent storage and an en-suite shower room. a second single bedroom and family bathroom. The flat is available from the start of June on an unfurnished basis.



ACCOMMODATION

2 Bedrooms, 1 Reception Room,
2 Bathrooms, Ground Floor Flat,
Unfurnished, 624 Approx Sq ft

COUNCIL TAX BAND

Band F

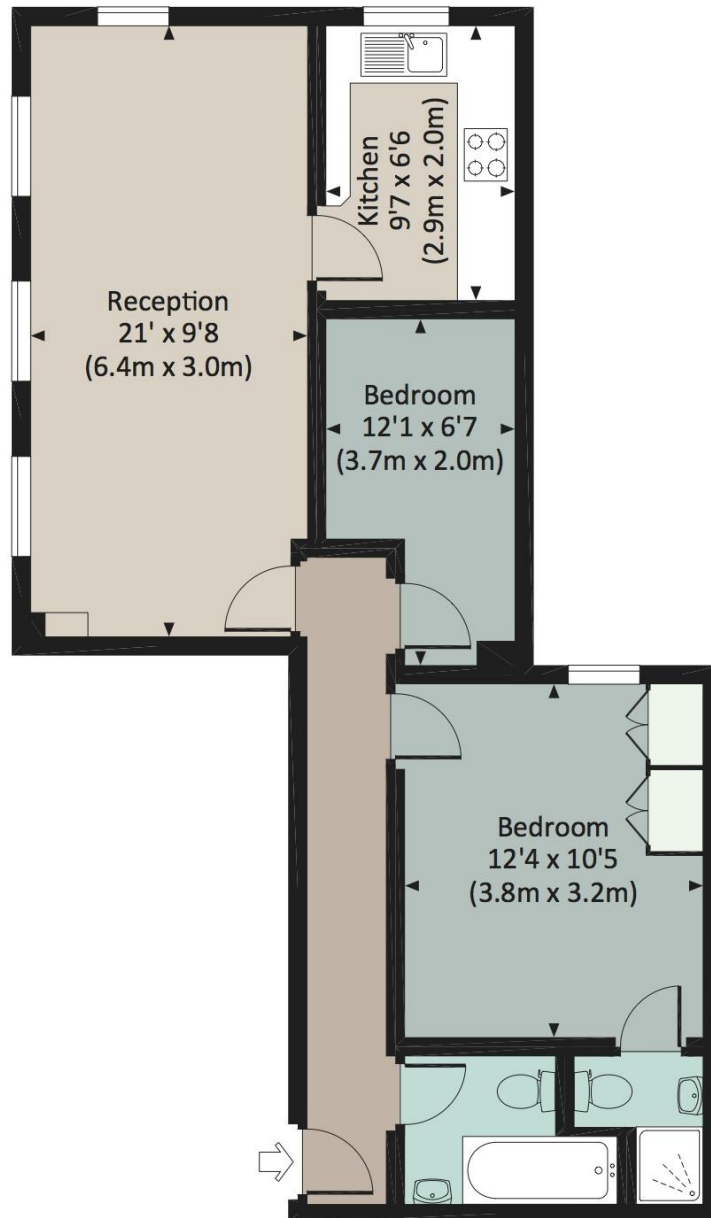
DEPOSIT

5 weeks' Rent



EARLS COURT SQUARE, SW5

Approx. gross internal area
624 Sq Ft. / 58.0 Sq M.



RAISED GROUND FLOOR



All measurements are approximate and for illustration purposes only as defined by the RICS Code of Measuring Practice © 2014
Dowling Jones Design www.dowlingjones.com 020 7610 9933

Energy Efficiency Rating		Current	Potential
Very energy efficient - lower running costs			
(92+)	A		
(81-91)	B		
(69-80)	C		
(55-68)	D	68	78
(39-54)	E		
(21-38)	F		
(1-20)	G		
Not energy efficient - higher running costs			
England, Scotland & Wales		EU Directive 2002/91/EC	

This floorplan is for illustration purposes only and is not to scale. The position and size of doors, windows, appliances and other features are approximate.

*Please note, the rent cannot be paid on a weekly basis

Winkworth

South Kensington Lettings | 020 7370 6767 | lettings.southken@winkworth.co.uk

winkworth.co.uk

for every step...

Winkworth wishes to inform prospective buyers and tenants that these particulars are a guide and act as information only. All our details are given in good faith and believed to be correct at the time of printing but they don't form part of an offer or contract. No Winkworth employee has authority to make or give any representation or warranty in relation to this property. All fixtures and fittings, whether fitted or not are deemed removable by the vendor unless stated otherwise and room sizes are measured between internal wall surfaces, including furnishings.