



**WHITSTABLE ROAD, CANTERBURY, CT2**  
**£3,000 PER MONTH UNFURNISHED**

**Canterbury | 01227 456 645 | [canterbury@winkworth.co.uk](mailto:canterbury@winkworth.co.uk)**

Tenant Fees Apply: Details of fees for tenant referencing, tenancy agreement admin fees and renewal fees are available on the Winkworth website and the link can be found with the displayed rent for the property. Tenants should ensure they are fully conversant with these upfront fees and other costs that are involved at the outset of the tenancy before making an offer to rent and your local Winkworth office will provide written details upon request.



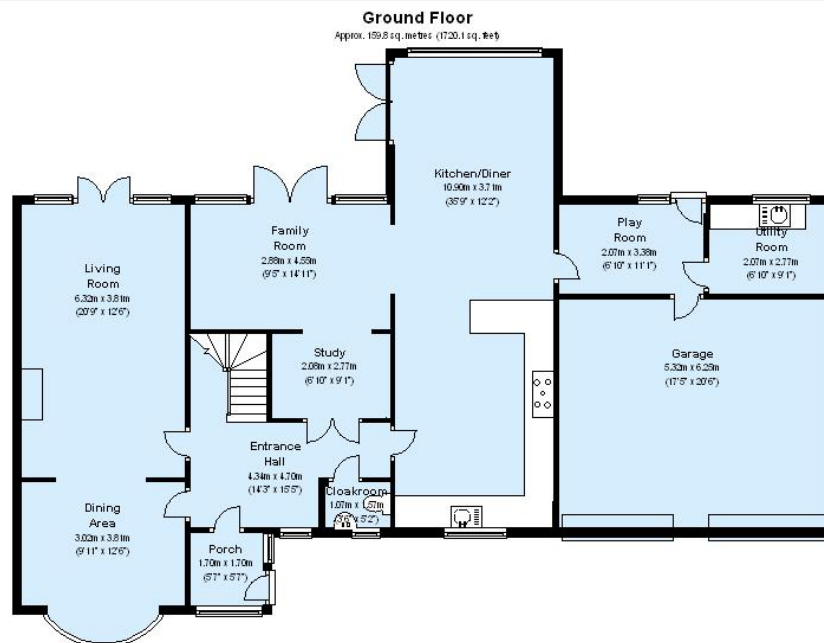
## DESCRIPTION:

Sympathetically extended, a 1930's detached family home with four double bedrooms, study, family room and several further reception rooms is situated in the desirable Blean area of North Canterbury.

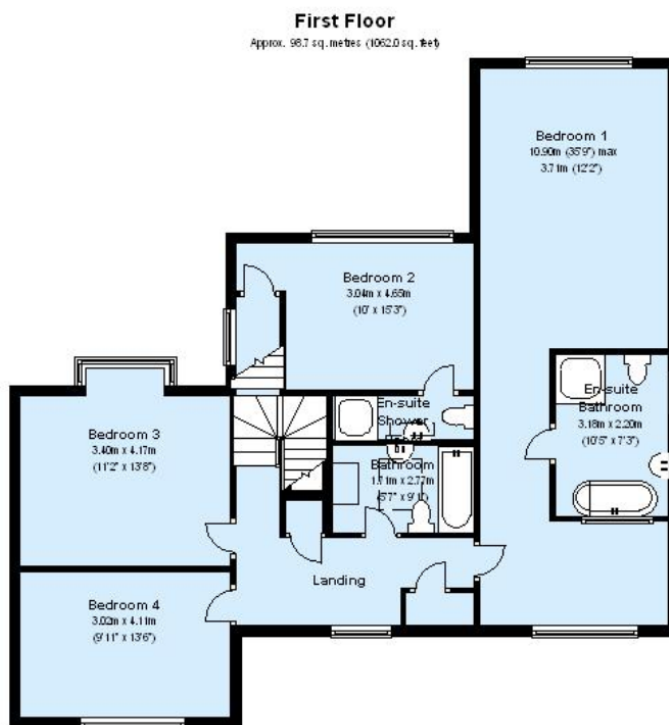




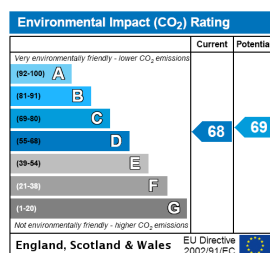
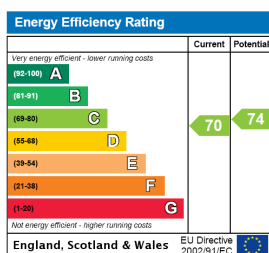




Total area: approx. 258.5 sq. metres (2782.1 sq. feet)



This floorplan is for illustration purposes only and is not to scale. The position and size of doors, windows, appliances and other features are approximate.



**Deposit: £3,461.53**

**Holding Deposit: £692.30**

**Council Tax Band: G**

Where no figures are shown, we have been unable to ascertain the information. All figures that are shown were correct at the time of printing.