



**GAZZANO BUILDING, 33-35 TOPHAM STREET, LONDON, EC1R
£750,000 LEASEHOLD**

THIS RECENTLY REFURBISHED TWO BEDROOM, TWO BATHROOM FLAT HAS BEEN FINISHED TO AN EXCELLENT STANDARD WITH WHITE QUARTZ WORKTOPS, SIEMENS APPLIANCES AND HANS GROHE TAPS.

Clerkenwell | 020 7405 1288 | clerkenwell@winkworth.co.uk

Winkworth



DESCRIPTION:

The stylish open plan kitchen reception is exceptionally bright with floor to ceiling south facing windows. There is secure entry via video phone, lift access and on street parking is available via an Islington permit.



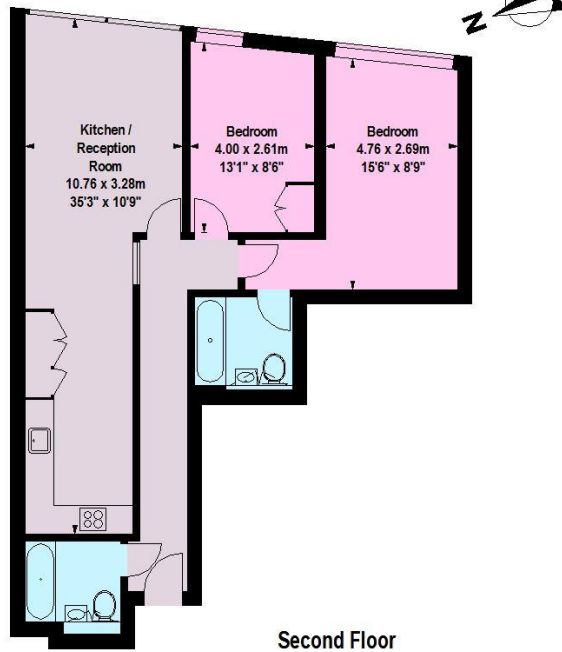
Winkworth



Winkworth

Topham Street, EC1

Approximate Gross Internal Area 74.3 sq.m / 800 sq.ft

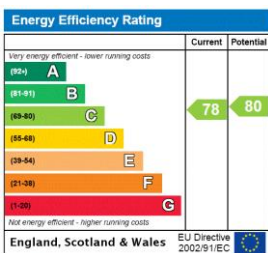


Second Floor

Floor Plan produced for Regent by Mays Floorplans © . Tel 020 3397 4594

This floor plan should be used as a general outline for guidance only and does not constitute in whole or in part an offer or contract. Any intending purchaser or lessee should satisfy themselves by inspection, searches, enquiries and full survey as to the correctness of each statement. Any areas, measurements or distances quoted are approximate and should not be used to value a property or be the basis of any sale or let.

This floorplan is for illustration purposes only and is not to scale. The position and size of doors, windows, appliances and other features are approximate.



Clerkenwell | 020 7405 1288 | clerkenwell@winkworth.co.uk



winkworth.co.uk

See things differently

Winkworth wishes to inform prospective buyers and tenants that these particulars are a guide and act as information only. All our details are given in good faith and believed to be correct at the time of printing but they don't form part of an offer or contract. No Winkworth employee has authority to make or give any representation or warranty in relation to this property. All fixtures and fittings, whether fitted or not are deemed removable by the vendor unless stated otherwise and room sizes are measured between internal wall surfaces, including furnishings.