



FLAT 8, ATKINS SQUARE, DALSTON LANE, LONDON, E8
£500,000 LEASEHOLD

STUNNING CONTEMPORARY 2 BED APARTMENT WITH PRIVATE BALCONY!

Hackney | 020 8986 4216 | hackney@winkworth.co.uk

Winkworth

[winkworth.co.uk](https://www.winkworth.co.uk)

See things differently



DESCRIPTION:

This bright and spacious 2-bedroom apartment, located in the heart of Hackney, offers a fantastic opportunity to live in one of London's most vibrant and rapidly evolving areas. Situated in Atkins Square, this property is ideal for those seeking a modern home with excellent transport links, local amenities, and a strong sense of community.

Key Features:

Generously sized living space with plenty of natural light

Two double bedrooms, perfect for a small family or professionals looking for extra space

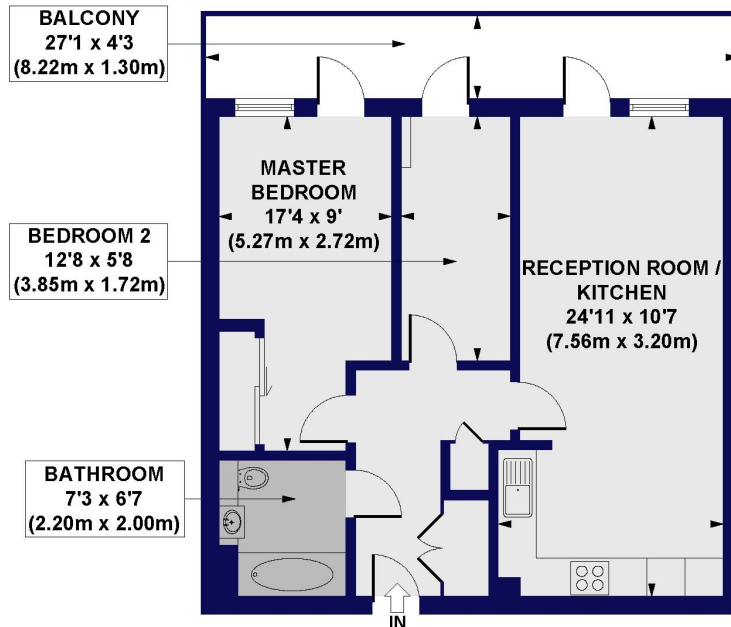
Modern kitchen and bathroom with high-quality fixtures and fittings

Ample storage throughout the apartment

Winkworth



Atkins Square, Dalston Lane, E8
Approx. Gross Internal Floor Area 646 sq. ft / 60.03 sq. m



FIRST FLOOR

All measurements of walls, doors, windows, fittings and appliances, including their size and location, are shown as standard sizes and do not constitute any warranty or representation by the seller, their agent or CP Creative. Any intending purchaser must satisfy himself by inspection or otherwise as to the correctness of the information contained in these plans. This plan is for illustrative purposes only and should be used as such by any prospective purchasers.

Winkworth

This floorplan is for illustration purposes only and is not to scale. The position and size of doors, windows, appliances and other features are approximate.

Energy Efficiency Rating		Current	Potential
Very energy efficient - lower running costs			
(92-100)	A		
(81-91)	B	84	84
(69-80)	C		
(55-68)	D		
(39-54)	E		
(21-38)	F		
(1-20)	G		
Not energy efficient - higher running costs			
England, Scotland & Wales		EU Directive 2002/91/EC	

Hackney | 020 8986 4216 | hackney@winkworth.co.uk

Winkworth

winkworth.co.uk

See things differently

Winkworth wishes to inform prospective buyers and tenants that these particulars are a guide and act as information only. All our details are given in good faith and believed to be correct at the time of printing but they don't form part of an offer or contract. No Winkworth employee has authority to make or give any representation or warranty in relation to this property. All fixtures and fittings, whether fitted or not are deemed removable by the vendor unless stated otherwise and room sizes are measured between internal wall surfaces, including furnishings.