



RIVERWAY, N13  
**£675,000 FREEHOLD**

**A SPACIOUS FAMILY HOME PROVIDING  
 LIGHT AND AIRY LIVING ACCOMMODATION  
 WITH CHARACTER FEATURES.**

Palmers Green | 020 8920 9900 | [palmersgreen@winkworth.co.uk](mailto:palmersgreen@winkworth.co.uk)

**Winkworth**

for every step...

[winkworth.co.uk](http://winkworth.co.uk)





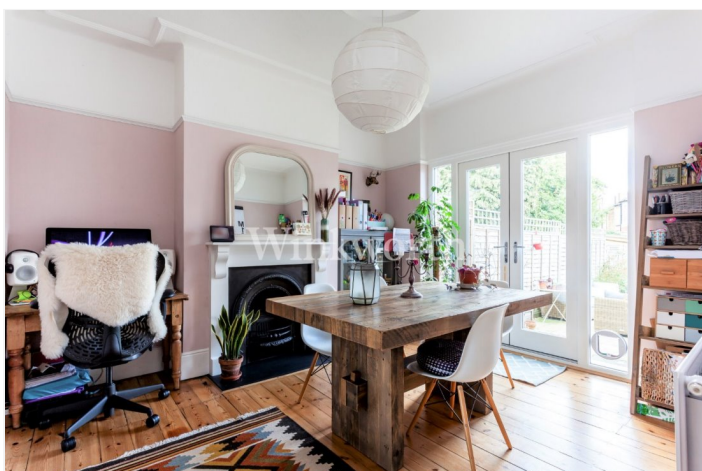
## DESCRIPTION:

A charming family home located close to the popular Hazelwood Primary school, and within easy reach of Palmers Green mainline BR station and Broomfield Park. The property has been sympathetically updated to provide 1108 Sq.ft of light and spacious living accommodation with an array of character features including high ceilings, fireplaces, stripped wood doors and flooring.

On the ground floor you will find an enticing front reception room, complete with a fireplace and a bay with fitted window shutters. There is a separate dining room which also benefits from a fireplace and French doors leading out the rear garden. A centrally located morning room has the potential to be utilised as an office or playroom. At the rear of the house is a delightful kitchen with pastel tone units finished with a block wood worktop and additional access to the garden. The first floor provides an attractive family bathroom and three generously sized bedrooms, one of which features an original cast iron fireplace and a fitted wardrobe. Externally the property enjoys a well-maintained rear garden extending 58'7 in length and a front garden.

## AT A GLANCE:

- Three Bedroom Terraced House
- Beautifully Presented Throughout
- Conveniently Located Close to Hazelwood Primary School, Palmers Green Mainline BR Station and Broomfield Park
- Character Features Including High Ceilings, Picture Rails, Dado Rails, Stained Glass Front Door, Stripped Wood Doors and Flooring
- Spacious Reception Room and Dining Room
- Morning Room
- Attractive Bathroom
- Generously Sized Bedrooms
- Well-Maintained Rear Garden and a Front Garden

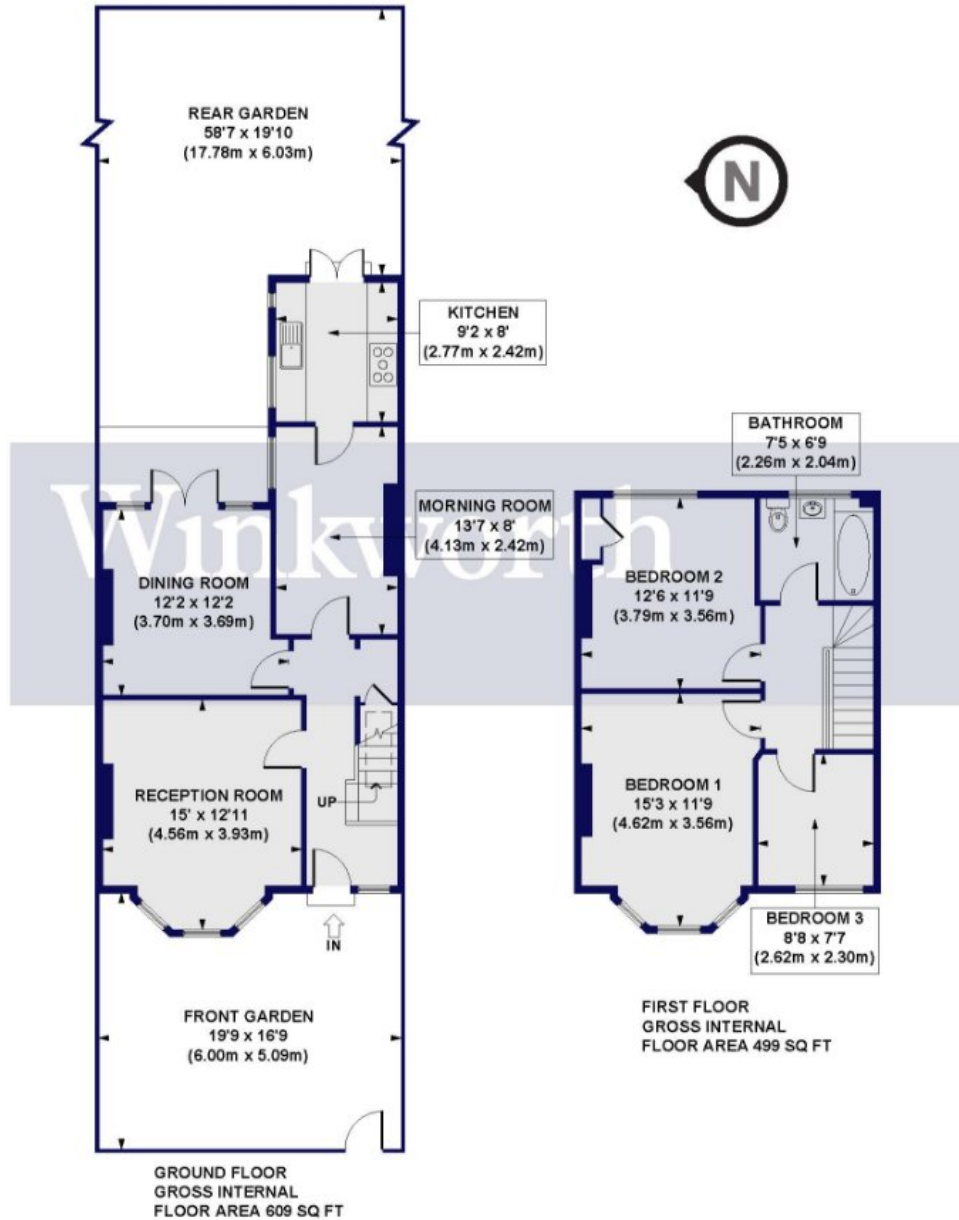






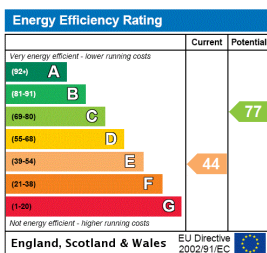
## Riverway, N13

Approx. Gross Internal Floor Area 1108 sq. ft / 102.95 sq. m



All measurements of walls, doors, windows, fittings and appliances, including their size and location, are shown as standard sizes and do not constitute any warranty or representation by the seller, their agent or CP Creative. Any intending purchaser must satisfy himself by inspection or otherwise as to the correctness of the information contained in these plans.

This floorplan is for illustration purposes only and is not to scale. The position and size of doors, windows, appliances and other features are approximate.



# Winkworth

Palmers Green | 020 8920 9900 | palmersgreen@winkworth.co.uk

for every step...

[winkworth.co.uk](http://winkworth.co.uk)

Winkworth wishes to inform prospective buyers and tenants that these particulars are a guide and act as information only. All our details are given in good faith and believed to be correct at the time of printing but they don't form part of an offer or contract. No Winkworth employee has authority to make or give any representation or warranty in relation to this property. All fixtures and fittings, whether fitted or not are deemed removable by the vendor unless stated otherwise and room sizes are measured between internal wall surfaces, including furnishings.