



WOOD VALE, LONDON, SE23
£1,100,000 FREEHOLD

**MODERN DESIGN MEETS CLASSIC CHARM IN THIS
BEAUTIFULLY PRESENTED HOME**

Forest Hill | | foresthill@winkworth.co.uk



DESCRIPTION:

A stylish home on a quiet, tree-lined street in a sought-after area, featuring modern interiors, a private garden, and excellent access to local amenities and transport.

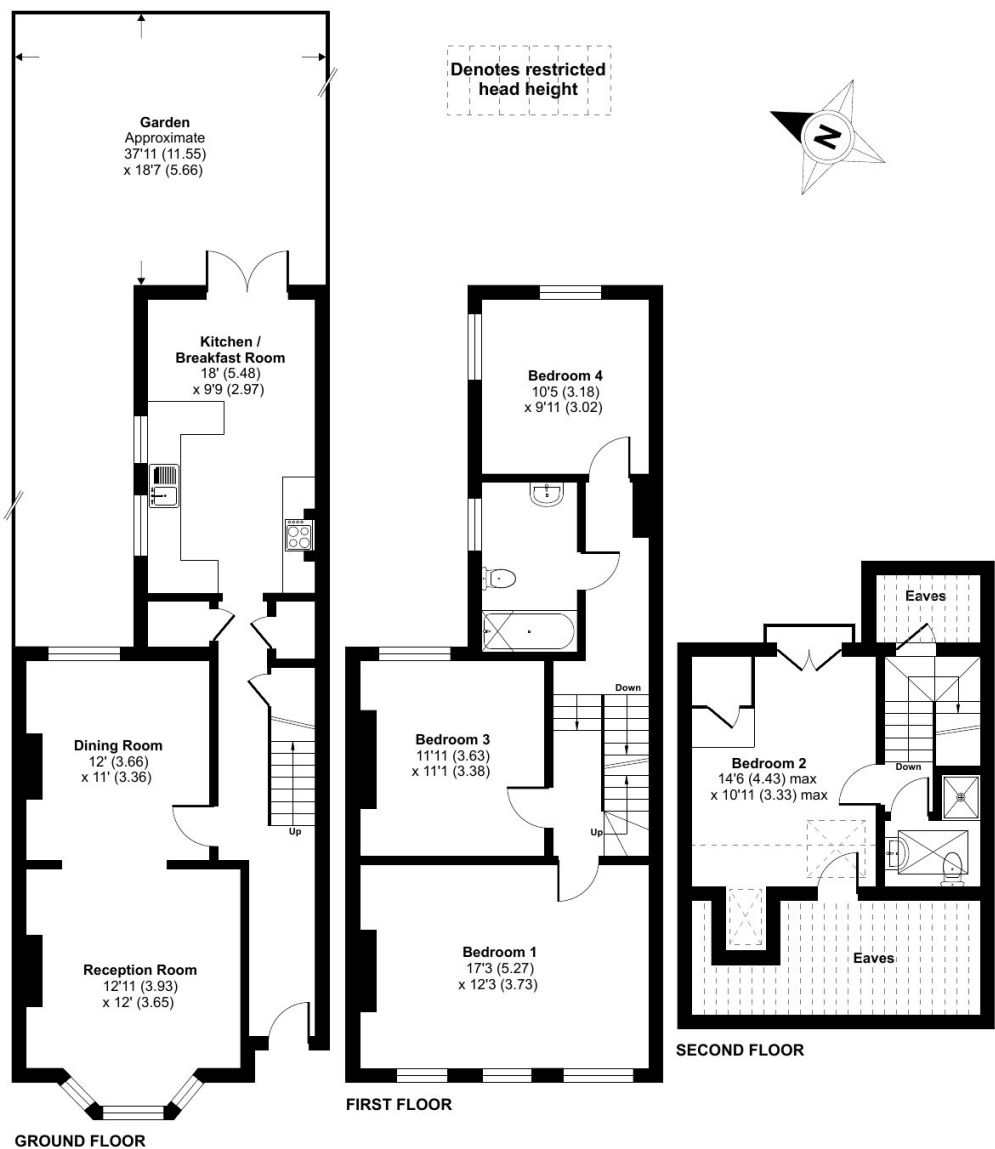




Wood Vale, London, SE23

Approximate Area = 1482 sq ft / 137.6 sq m
Limited Use Area(s) = 214 sq ft / 19.8 sq m
Total = 1696 sq ft / 157.4 sq m

For identification only - Not to scale



Floor plan produced in accordance with RICS Property Measurement Standards incorporating International Property Measurement Standards (IPMS2 Residential). © nlc/ecom 2025. Produced for Winkworth Forest Hill and New Cross. REF: 1294139

This floorplan is for illustration purposes only and is not to scale. The position and size of doors, windows, appliances and other features are approximate.

Score	Energy rating	Current	Potential
92+	A		
81-91	B		84 B
69-80	C		
55-68	D	68 D	
39-54	E		
21-38	F		
1-20	G		

Tenure: Freehold