



## Adenmore Road, SE6

£275,000 *Leasehold*



This well-presented one-bedroom ground floor apartment is set in a desirable location and offers a perfect blend of comfort and convenience. Featuring a bright open-plan living area, modern kitchen, spacious double bedroom, and a contemporary bathroom, the property also boasts a private patio.



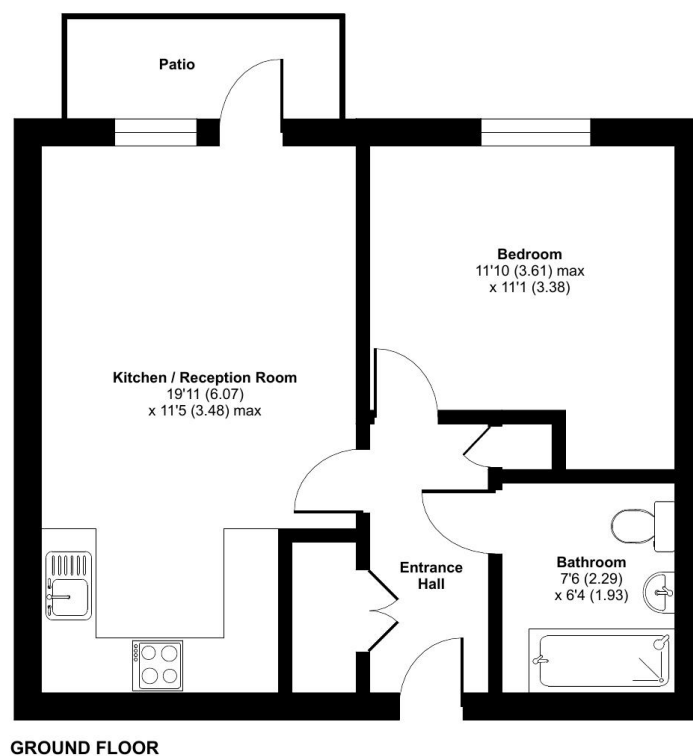
**Forest Hill**

| [foresthill@winkworth.co.uk](mailto:foresthill@winkworth.co.uk)

## Adenmore Road, London, SE6

Approximate Area = 463 sq ft / 43 sq m

For identification only - Not to scale

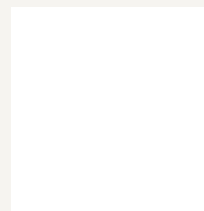


Floor plan produced in accordance with RICS Property Measurement Standards incorporating International Property Measurement Standards (IPMS2 Residential). © nchecon 2025. Produced for Winkworth Forest Hill and New Cross. REF: 1365055

### MATERIAL INFO

For more information, scan the QR code or visit the link below

**Tenure:** Leasehold



<https://www.winkworth.co.uk/sale/property/FHL250291>

Where no figures are shown, we have been unable to ascertain the information. All figures that are shown were correct at the time of printing.

**Forest Hill**

| [foresthill@winkworth.co.uk](mailto:foresthill@winkworth.co.uk)