

ADENMORE ROAD, SE6
£275,000 LEASEHOLD

DESCRIPTION:

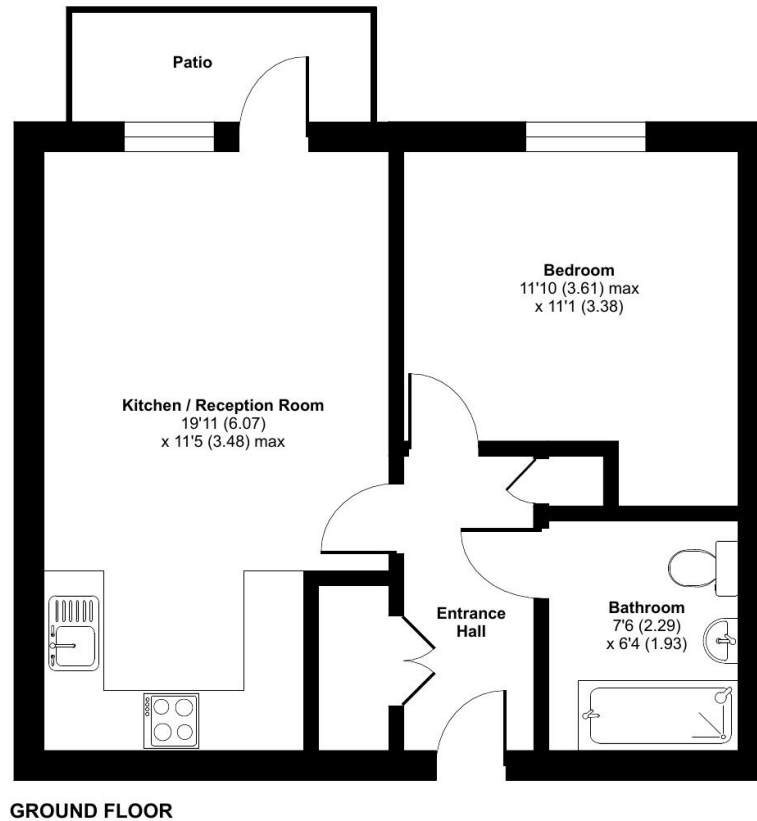
This well-presented one-bedroom ground floor apartment is set in a desirable location and offers a perfect blend of comfort and convenience. Featuring a bright open-plan living area, modern kitchen, spacious double bedroom, and a contemporary bathroom, the property also boasts a private patio.

Forest Hill | | foresthill@winkworth.co.uk

Adenmore Road, London, SE6

Approximate Area = 463 sq ft / 43 sq m

For identification only - Not to scale



Floor plan produced in accordance with RICS Property Measurement Standards incorporating International Property Measurement Standards (IPMS2 Residential). © nñchecon 2025. Produced for Winkworth Forest Hill and New Cross. REF: 1365055

This floorplan is for illustration purposes only and is not to scale. The position and size of doors, windows, appliances and other features are approximate.

For more details visit: <https://www.winkworth.co.uk/sale/property/FHL250291>