

East Street, London, SE17

£599,000 Leasehold

A stunning new flat finished to an excellent standard. This pub conversion flat comprises two bedrooms, two bathrooms over two floors. Situated on East Street near Elephant and Castle. EPC rating C.

LOCATION

The flat sits on East Street between Brandon Street and Dawes Street and close to Nursery Row Park. The flat is close to Elephant Park, with plenty of eateries and bars specifically on Sayer St.

DESCRIPTION

The flat is part of a large pub conversion, it is a brand-new conversion finished to a very high standard throughout.

The ground floor is arranged to provide a double bedroom with ensuite and a reception room mezzanine which looks down to the lower ground floor.

On the lower ground floor is a further reception room, a fully fitted modern kitchen and another double bedroom with en suite.

Council tax band - B

Leasehold - 999 year lease

Ground rent - Peppercorn

Service charge - TBC

LOCAL AUTHORITY

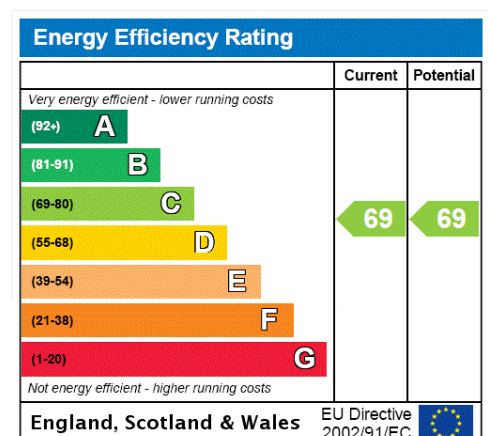
Southwark Council, London

TENURE

Leasehold

DIRECTIONS

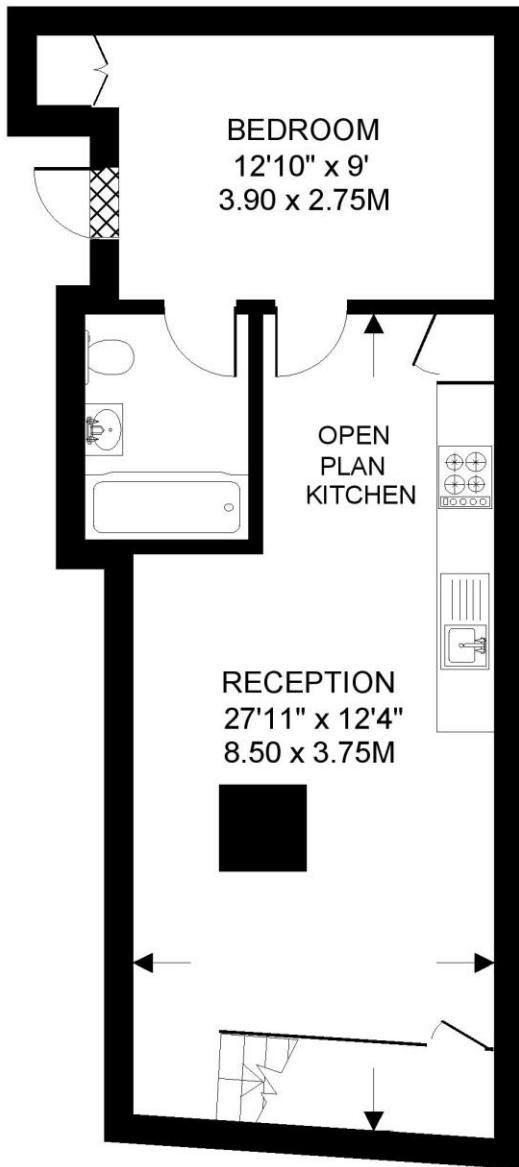
Elephant and Castle Station (Northern Line, Bakerloo and City Thames Link) is 0.6 mile away. Kennington Station (Northern Line) is 0.7 mile away. The area is well served with frequent bus services into the city and beyond.



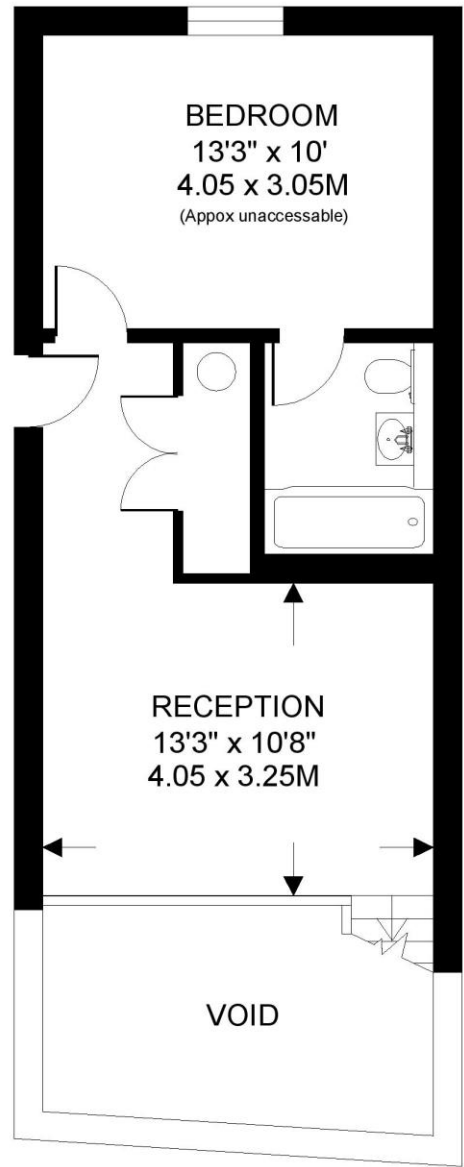


EAST STREET SE17
2 BEDROOM FLAT

Approximate gross floor area
877 SQ.FT. / 81.4 SQ.M.



LOWER GROUND FLOOR 482 SQ.FT.



RAISED GROUND FLOOR 395 SQ.FT.

This floorplan is for illustration purposes only and is not to scale. The position and size of doors, windows, appliances and other features are approximate.
Copyright: These plans should not be reproduced by any other person, without permission.
Floorplan produced for Winkworth by Floorplanners 07801 228850

Kennington | 020 7587 0600 | kennington@winkworth.co.uk