



South Gardens, South Harting, Petersfield, GU31

Guide Price: £1,100,000 *Freehold*

4  4  2 

A pretty, detached period cottage in the heart of this popular Downland village with west facing gardens and a paddock.

KEY FEATURES

- A pretty detached Grade II Listed thatch cottage
- Believed to date from the 16th century
- Situated in the village of South Harting
- Private driveway, parking and double carport
- West-facing gardens, stable and paddock
- Grounds in excess of 1 acre



Petersfield

01730 267274 | petersfield@winkworth.co.uk

Winkworth

for every step...



DESCRIPTION

The property is a very pretty detached, Grade II Listed, thatched cottage believed to date from the 16th Century with accommodation over two floors under a thatched roof, the rear of which was partially replaced in 2023. The layout can be seen in the floorplan and of particular note are the extensive period features including exposed timbers and brickwork throughout along with an inglenook fireplace. Outside, the house is approached off the B2146 where there's a long meandering drive accessed from the southern boundary. As you progress up the drive, there is a paddock to your left followed by a stable block with two stables, a tack room and then by a large parking area is a detached double carport and toolshed. The gardens lie to the rear of the house and being on the West side, it's an ideal space for entertaining. There is a green house and a building which would make an ideal home office, studio or accommodation subject to the usual consents. Predominantly laid to lawn, within the garden are several fruit trees, mature shrubs, two small ponds and a vegetable patch. On the North side of the cottage, is a small garden with a pedestrian gate to the road and a path up to the front door. At the bottom of the garden is a gate leading directly on to South Gardens. In all, the house lies in a plot in excess of one acre and an internal viewing is strongly recommended.

ACCOMMODATION

Four bedrooms, family bathroom, en suite bathroom, five reception rooms, kitchen/breakfast room, downstairs shower room, double carport, off-street parking, gardens, stable and paddock. In all, grounds of approximately 1 acre.

LOCATION

The property backs onto South Gardens; a park in the centre of village with three ponds, a children's playground and a footpath leads directly up onto Harting Down, a renowned point on the South Downs Way; a walk linking Winchester to the west and Eastbourne to the east. The village has two churches, a primary school, pre-school and a forest school which is next to the house. There is a village shop with Post Office, the ever-popular White Hart pub and coffee shop all nearby. There is the community-run minibus service run by volunteers providing links to both Petersfield and Chichester. Petersfield lies approximately 4 miles to the north-west and offers a variety of amenities in a bustling town centre. Shops include Waitrose, M&S Food, Tesco, Lidl and Aldi and there are numerous boutiques, cafes and further shops. The train station provides a direct service to London Waterloo to the north (in approximately an hour) and Portsmouth to the south. The town has many active clubs and societies with golf available at Petersfield and Liphook, horse and motor racing at Goodwood, polo at Cowdray Park, craft courses at West Dean and sailing along the South Coast which are all at easy reach. There are many popular schools in the area including Churcher's College, Bedales, Ditcham Park, The Petersfield School and Midhurst Rother College.

DIRECTIONS

From Petersfield, proceed along Sussex Road (B2146) towards South Harting. On entering South Harting at a "T"-junction, turn right and follow this road passing the church on your right. The property is on your right after a further 250 metres, almost immediately after the turning up Tipper Lane on your left. Pass the house and then take the next drive on your right.

Ref: AB/240197/2

Petersfield

01730 267274 | petersfield@winkworth.co.uk

Winkworth

for every step...

MATERIAL INFORMATION

Method of sale: Private treaty

Tenure: Freehold

Construction: Brick and stone with timber beams and thatched roof

Services: Oil-fired central heating, mains electricity, water and drainage.

Council Tax: Chichester District Council. **Band:** "G"

EPC Rating: "E" (41)

Service Charge: N/A

Ground Rent: N/A

Rights & Easements: None known

Restrictions: Within the South Downs National Park

Mobile signal: Likely (Ofcom)

Broadband Availability: Superfast (Ofcom)

Parking: Off-street driveway parking and double carport

Viewings: Strictly by appointment with Winkworth Petersfield

WHAT3WORDS: ///carefully.javelin.laces



For more information, scan the QR code or visit the link below



<https://www.winkworth.co.uk/sale/property/PET240197>

Where no figures are shown, we have been unable to ascertain the information. All figures that are shown were correct at the time of printing.

Important Notice

Winkworth for themselves and the Vendors or lessors of this property whose agents they are, give notice that: i) These particulars have been prepared in good faith to give a fair overall view of the property, do not form any part of an offer or contract, and must not be relied upon as statements or representations of fact. ii) Purchasers must rely on their own enquiries by inspections or otherwise on all matters including planning or other consents. iii) The information in these particulars is given without responsibility on the part of Winkworth or their clients. Neither Winkworth nor their employees have any authority to make or give any representations or warranties whatever in relation to this property. iv) Any areas, measurements or distances referred to are given as a guide only and are not precise. Photographs are not necessarily comprehensive nor current; no assumption should be made that any contents shown are included in the sale nor with regards to parts of the property which have not been photographed. v) Nothing in these particulars should be deemed to be a statement that the property is in good structural condition or that any services or equipment are in good working order – nor have Winkworth tested them. All fixtures and fittings, whether fitted or not are deemed removable by the vendor unless stated otherwise and room sizes are measured between internal wall surfaces, including furnishings.



Petersfield

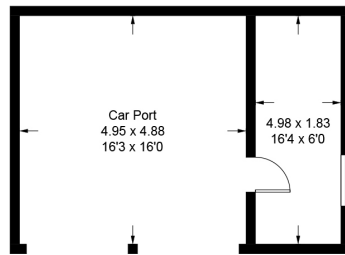
01730 267274 | petersfield@winkworth.co.uk

Winkworth

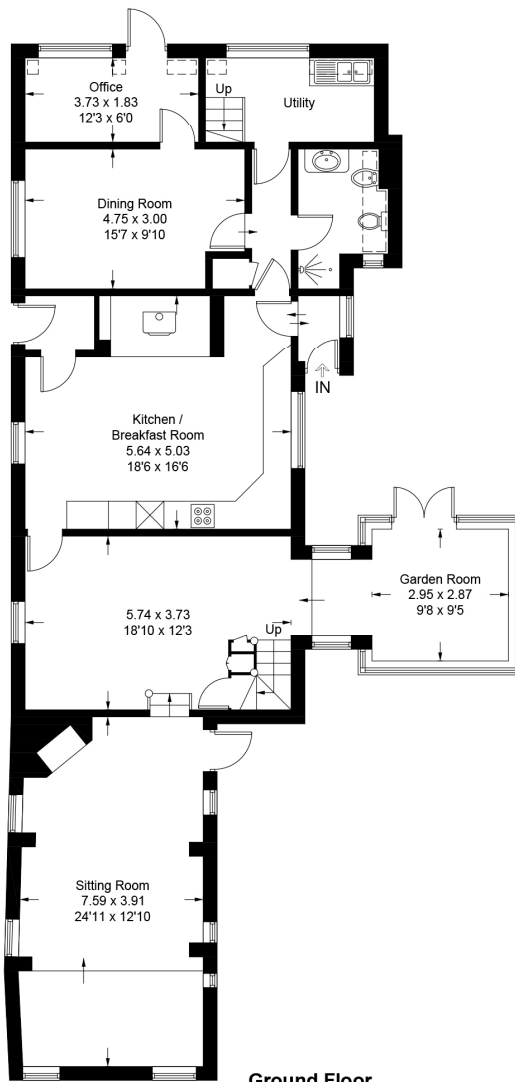
for every step...

South Gardens, GU31 5QJ

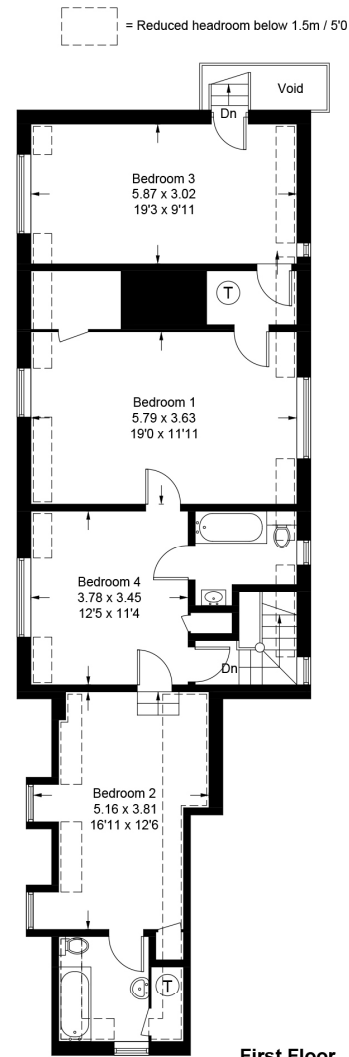
Approximate Gross Internal Area = 227.3 sq m / 2446 sq ft
 Outbuilding = 9.1 sq m / 98 sq ft
 (Excluding Car Port)
 Total = 236.4 sq m / 2544 sq ft



(Not Shown In Actual Location / Orientation)



Ground Floor



First Floor

PRODUCED FOR WINKWORTH ESTATE AGENTS.

Whilst every attempt has been made to ensure the accuracy of the floorplan, measurements of doors, windows and rooms are approximate. These plans are for representation purposes only as defined by RICS Code of Measuring Practice and used as such by any prospective purchaser. Created by Emzo Marketing 2024.

Winkworth wishes to inform prospective buyers and tenants that these particulars are a guide and act as information only. All our details are given in good faith and believed to be correct at the time of printing but they don't form part of an offer or contract. No Winkworth employee has authority to make or give any representation or warranty in relation to this property. All fixtures and fittings, whether fitted or not are deemed removable by the vendor unless stated otherwise and room sizes are measured between internal wall surfaces, including furnishings.

Petersfield

01730 267274 | petersfield@winkworth.co.uk

Winkworth

for every step...