



ORMONDE COURT, LONDON, SW15
£1,500 PER MONTH UNFURNISHED

A conveniently located one bedroom flat in an attractive art-deco building on the Upper Richmond Road, Putney

Putney | 020 8877 1000 | putney@winkworth.co.uk

Winkworth

for every step...

winkworth.co.uk



DESCRIPTION:

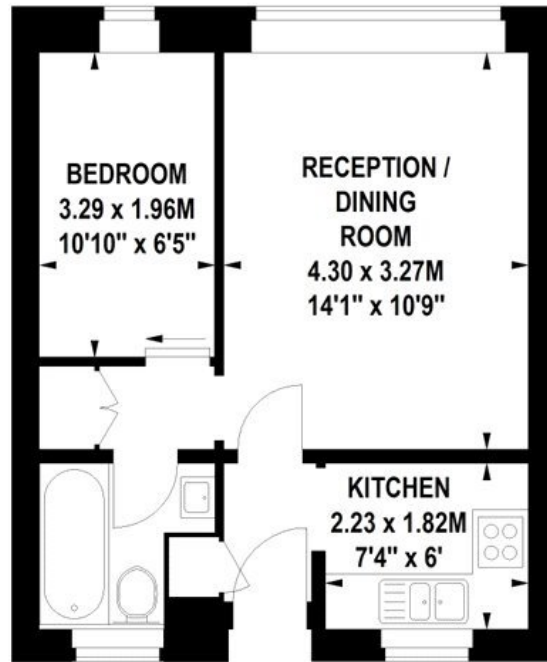
Situated on the ground floor with views of well-maintained communal gardens this property is conveniently located in an attractive building in central Putney.

Comprising of a separate kitchen, living room, bedroom and bathroom the flat would suit a single occupant or couple looking for a safe and convenient location with added benefits of communal gardens and onsite porter.

Ormonde Court is a popular and very well looked after development with a large 80ft landscaped garden. It is situated on the Upper Richmond Road close to Putney Leisure Centre and is a short walk of both East Putney and Putney Mainline stations. Also close at hand is Putney High Street with its array of shops, restaurants and bars.



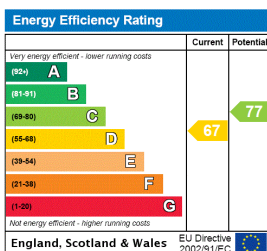
**Ormonde Court,
Upper Richmond Road, SW15**
Approximate Gross Internal Area 34 sq.m / 366 sq. ft



Ground Floor

Floor Plan produced for WINKWORTH by Mays Floorplans © . Tel 020 3397 4594
Illustration for identification purposes only, not to scale
All measurements are maximum, and include wardrobes and window bays where applicable

This floorplan is for illustration purposes only and is not to scale. The position and size of doors, windows, appliances and other features are approximate.



Deposit: 1 week's rent

Holding Deposit: 5 weeks' rent

Council Tax Band: Wandsworth

Where no figures are shown, we have been unable to ascertain the information. All figures that are shown were correct at the time of printing.

Putney | 020 8877 1000 | putney@winkworth.co.uk

Winkworth

for every step...

winkworth.co.uk

Winkworth wishes to inform prospective buyers and tenants that these particulars are a guide and act as information only. All our details are given in good faith and believed to be correct at the time of printing but they don't form part of an offer or contract. No Winkworth employee has authority to make or give any representation or warranty in relation to this property. All fixtures and fittings, whether fitted or not are deemed removable by the vendor unless stated otherwise and room sizes are measured between internal wall surfaces, including furnishings.