



LINKS ROAD, SW17  
£600,000 FREEHOLD

## A THREE BEDROOM TERRACED HOUSE WITHIN A DESIRABLE RESIDENTIAL ROAD.

Tooting | 020 8767 5221 | tooting@winkworth.co.uk

**Winkworth**

for every step...

[winkworth.co.uk](http://winkworth.co.uk)



## **DESCRIPTION:**

An exciting opportunity to purchase a three bedroom terraced house offering fantastic renovation potential.

The property features a bright reception room, a large open-plan kitchen dining room with sliding doors leading to the rear garden.

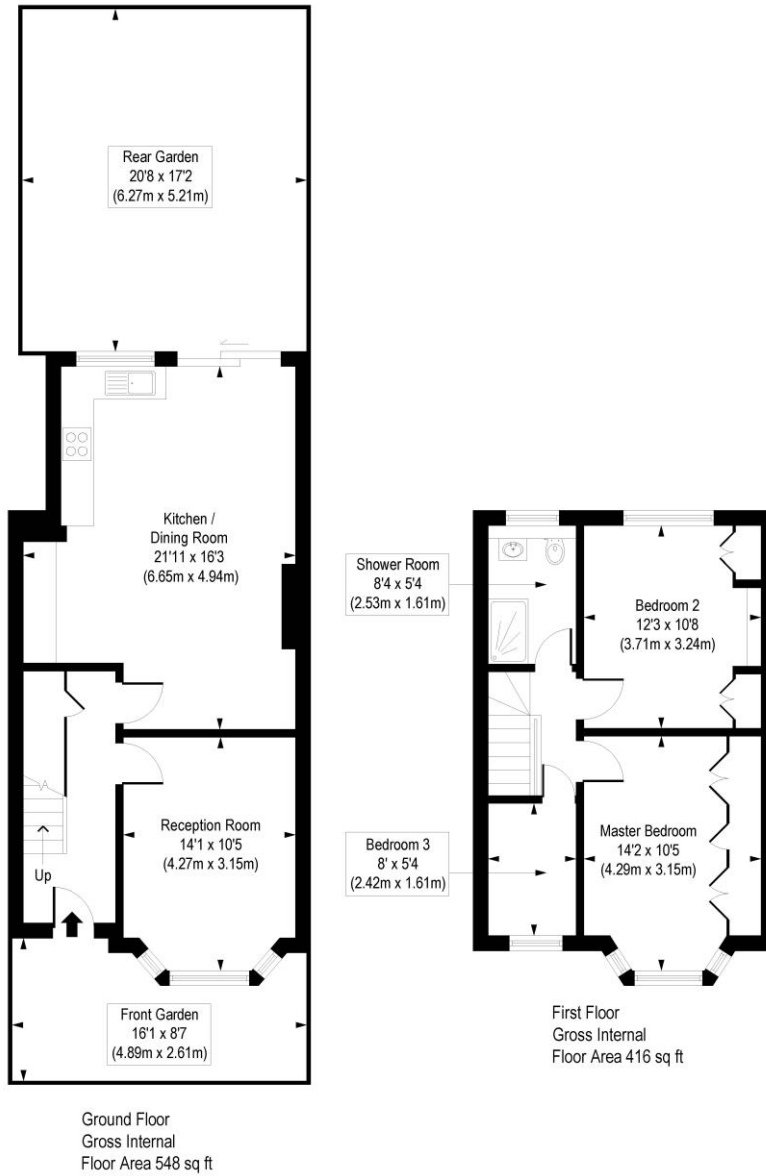
Upstairs, there are two double bedrooms, a single room or study, a shower room, and the potential for a loft conversion, subject to obtaining planning permission.

Links Road is a pretty, tree lined street within a desirable residential grid in Tooting, SW17 - situated only moments from Tooting Rail Station (City Thameslink) and well served by excellent primary and secondary schools. Presented to the market with no forward chain and available to view immediately.



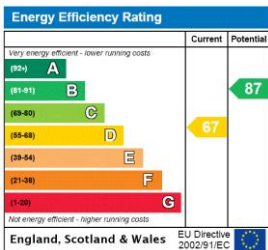
# Links Road, SW17

Approx. Gross Internal Floor Area 964 sq. ft / 89.56 sq. m



COMPLIANT WITH RICS CODE OF MEASURING PRACTICE. Floorplan is for illustrative purposes only and is not to scale. Every attempt has been made to ensure the accuracy of the floorplan shown, however all measurements, fixtures, fittings and data shown are an approximate interpretation for illustrative purposes only. Liability for errors, omissions or mis-statement through negligence or otherwise is hereby excluded.

This floorplan is for illustration purposes only and is not to scale. The position and size of doors, windows, appliances and other features are approximate.



Tooting | 020 8767 5221 | tooting@winkworth.co.uk

for every step...

winkworth.co.uk

Winkworth wishes to inform prospective buyers and tenants that these particulars are a guide and act as information only. All our details are given in good faith and believed to be correct at the time of printing but they don't form part of an offer or contract. No Winkworth employee has authority to make or give any representation or warranty in relation to this property. All fixtures and fittings, whether fitted or not are deemed removable by the vendor unless stated otherwise and room sizes are measured between internal wall surfaces, including furnishings.