



**NIGEL BUILDING, BOURNE ESTATE, LONDON, EC1N**  
**£520,000 TO BE ADVISED**

**AN EXCELLENT ONE BEDROOM FLAT ON THE FIRST FLOOR OF A GRADE II LISTED MANSION BLOCK RENOVATED TO A VERY HIGH STANDARD.**

Clerkenwell | 020 7405 1288 | [clerkenwell@winkworth.co.uk](mailto:clerkenwell@winkworth.co.uk)

**Winkworth**

for every step...

[winkworth.co.uk](http://winkworth.co.uk)



**DESCRIPTION:**

Comprising a generous living room, a double bedroom with fitted wardrobes, a very spacious kitchen big enough to accommodate a large dining table and bathroom with shower over bath. Further benefits include original wooden flooring and neutral decor. The location offers easy access to the City and the West End with local transport links including Farringdon Station, Angel underground station and numerous bus links.



for every step...

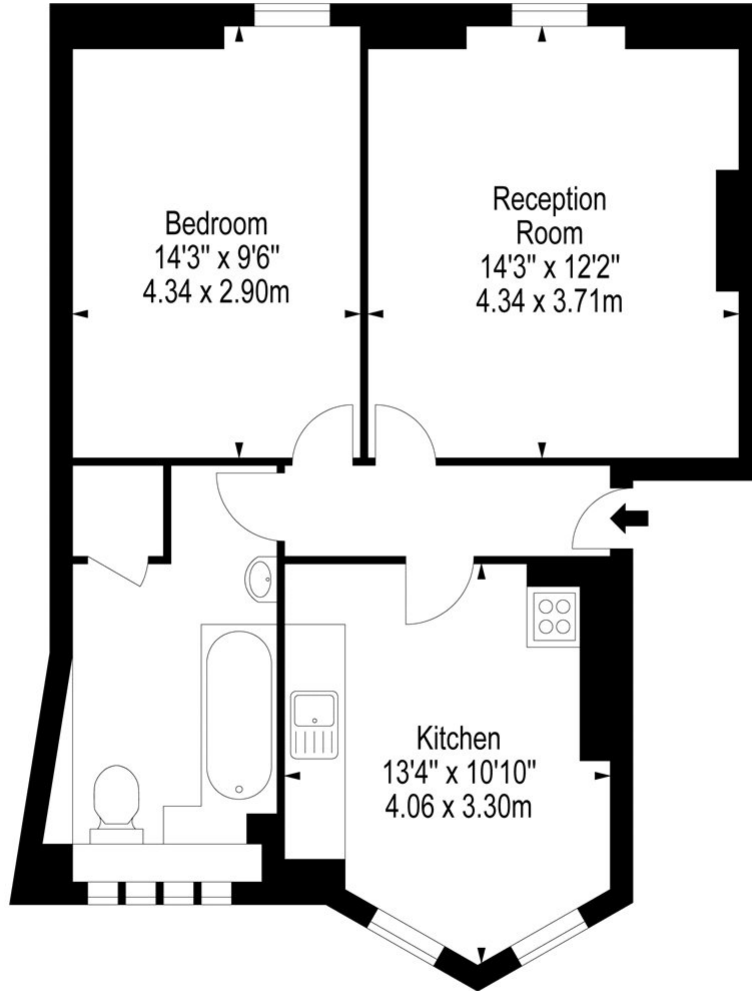


**Winkworth**

for every step...



# Nigel Building, Bourne Estate, EC1N

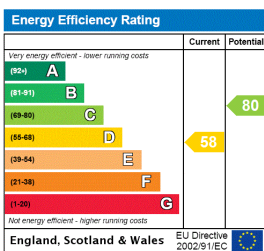


First Floor

Approx Gross Internal Area **562 Sq Ft - 52.21 Sq M**

Floor Plan Supplied For Identification Purposes Only And May Not Be Accurate  
Floor Plan by [www.elegantmediasolution.com](http://www.elegantmediasolution.com)

This floorplan is for illustration purposes only and is not to scale. The position and size of doors, windows, appliances and other features are approximate.



Clerkenwell | 020 7405 1288 | [clerkenwell@winkworth.co.uk](mailto:clerkenwell@winkworth.co.uk)



for every step...

[winkworth.co.uk](http://winkworth.co.uk)

Winkworth wishes to inform prospective buyers and tenants that these particulars are a guide and act as information only. All our details are given in good faith and believed to be correct at the time of printing but they don't form part of an offer or contract. No Winkworth employee has authority to make or give any representation or warranty in relation to this property. All fixtures and fittings, whether fitted or not are deemed removable by the vendor unless stated otherwise and room sizes are measured between internal wall surfaces, including furnishings.