



PEMBRIDGE VILLAS, W11
£695 PER WEEK (£3,011.66 PCM) FURNISHED

**A FANTASTIC TWO DOUBLE BEDROOM FLAT ON THE
 RAISED GROUND FLOOR OF THIS IMPRESSIVE PERIOD
 BUILDING.**

Notting Hill Lettings | 0207 727 3227 | nottinghill@winkworth.co.uk

Winkworth

for every step...

winkworth.co.uk



DESCRIPTION:

An elegant and spacious two double bedroom flat on the raised ground floor of this impressive period building. The property maintains its gorgeous original features boasting wooden floors throughout, impressive ceiling height, original fireplace and large sash windows. The property comprises a separate fully fitted kitchen, two double bedrooms and smartly refurbished bathroom with separate bath and shower. Available furnished and viewings are highly recommended.

Utilities:

Electricity – Mains

Water – Mains

Sewerage – Mains

Heating – Gas

Broadband <https://checker.ofcom.org.uk/en-gb/broadband-coverage>

Mobile Coverage <https://checker.ofcom.org.uk/en-gb/mobile-coverage>

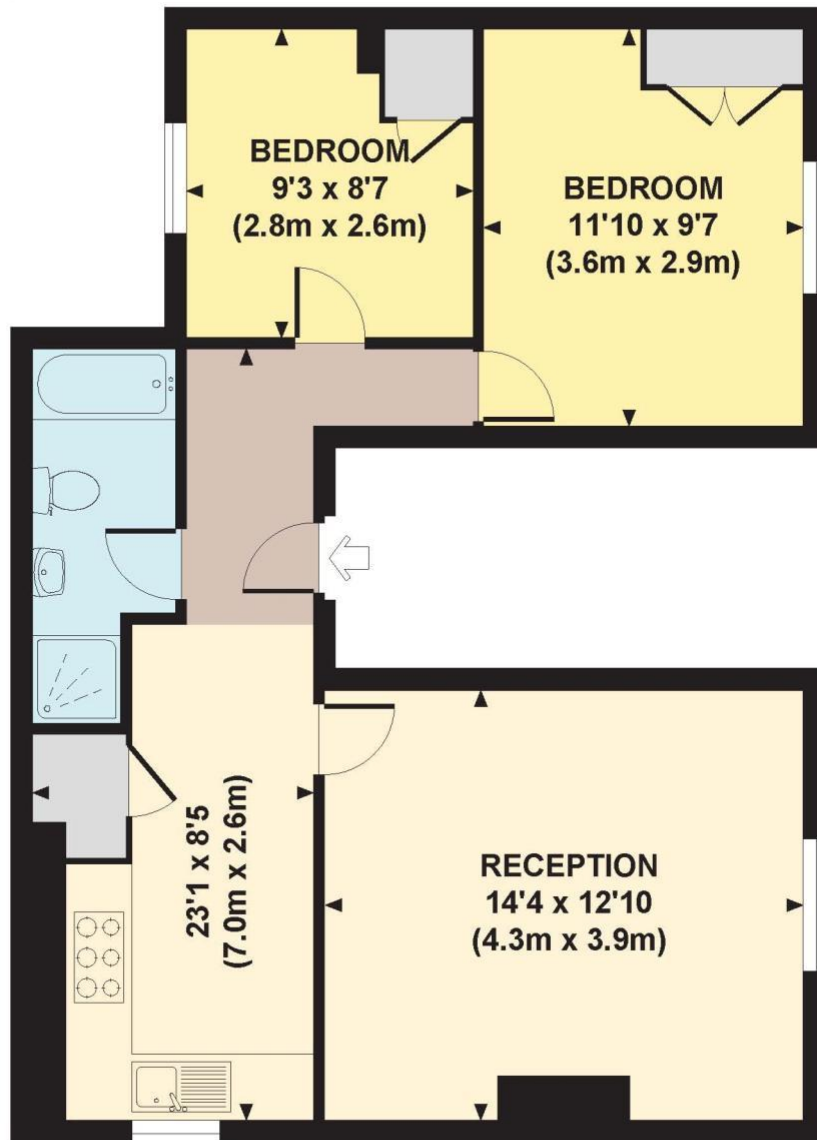
LOCATION:

Pembridge Villas is an imposing residential street of white stucco fronted houses running north from Notting Hill Gate towards Westbourne Grove. The property's ideal position between the two means it is a moment's walk from all the excellent transport connection of Notting Hill Gate, and the many fashionable boutiques, bars and restaurants of Westbourne Grove.

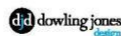


PEMBRIDGE VILLAS, W11

Approx. gross internal area
578 Sq Ft. / 54 Sq M.



GROUND FLOOR



Every attempt has been made to ensure the accuracy of this floor plan however, measurements are approximate and for illustration purposes only. Not to scale. Photography, floor plans & brochures © 2011 Dowling Jones Design Ltd www.dowlingjonesdesign.com 020 7610 9933 / 07795 974 209

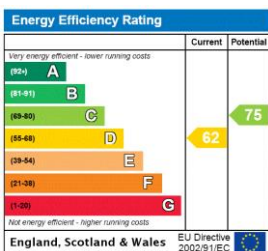
This floorplan is for illustration purposes only and is not to scale. The position and size of doors, windows, appliances and other features are approximate.

Deposit: £3,475

Holding Deposit: £695

Council Tax Band: E (RBKC)

Where no figures are shown, we have been unable to ascertain the information. All figures that are shown were correct at the time of printing.



Notting Hill Lettings | 0207 727 3227 | nottinghill@winkworth.co.uk

Winkworth

for every step...

winkworth.co.uk

Winkworth wishes to inform prospective buyers and tenants that these particulars are a guide and act as information only. All our details are given in good faith and believed to be correct at the time of printing but they don't form part of an offer or contract. No Winkworth employee has authority to make or give any representation or warranty in relation to this property. All fixtures and fittings, whether fitted or not are deemed removable by the vendor unless stated otherwise and room sizes are measured between internal wall surfaces, including furnishings.