



**14 Poplar Way, North Baddesley, SO52 9FW**

**Winkworth**



## **BEAUTIFUL DETACHED BUNGALOW IN EVER POPULAR LOCATION**

**North Baddesley is a large village located only three miles east of Romsey town centre. It provides a selection of local amenities and a well-regarded Infant & Junior School, which are both within easy reach of this home. This sought-after location also offers a highly rated secondary school. Nearby Romsey presents a further variety of local and national retailers, along with a choice of pubs and restaurants. There are convenient transport links to Romsey, Southampton and Winchester via a local bus service, which is within walking distance of this home.**

**Offered with no forward chain, 14 Poplar Way is a well-presented, two-bedroom detached bungalow in the ever-popular North Baddesley. The property comprises a kitchen/dining room, a spacious living room, two double bedrooms and a modern shower room.**

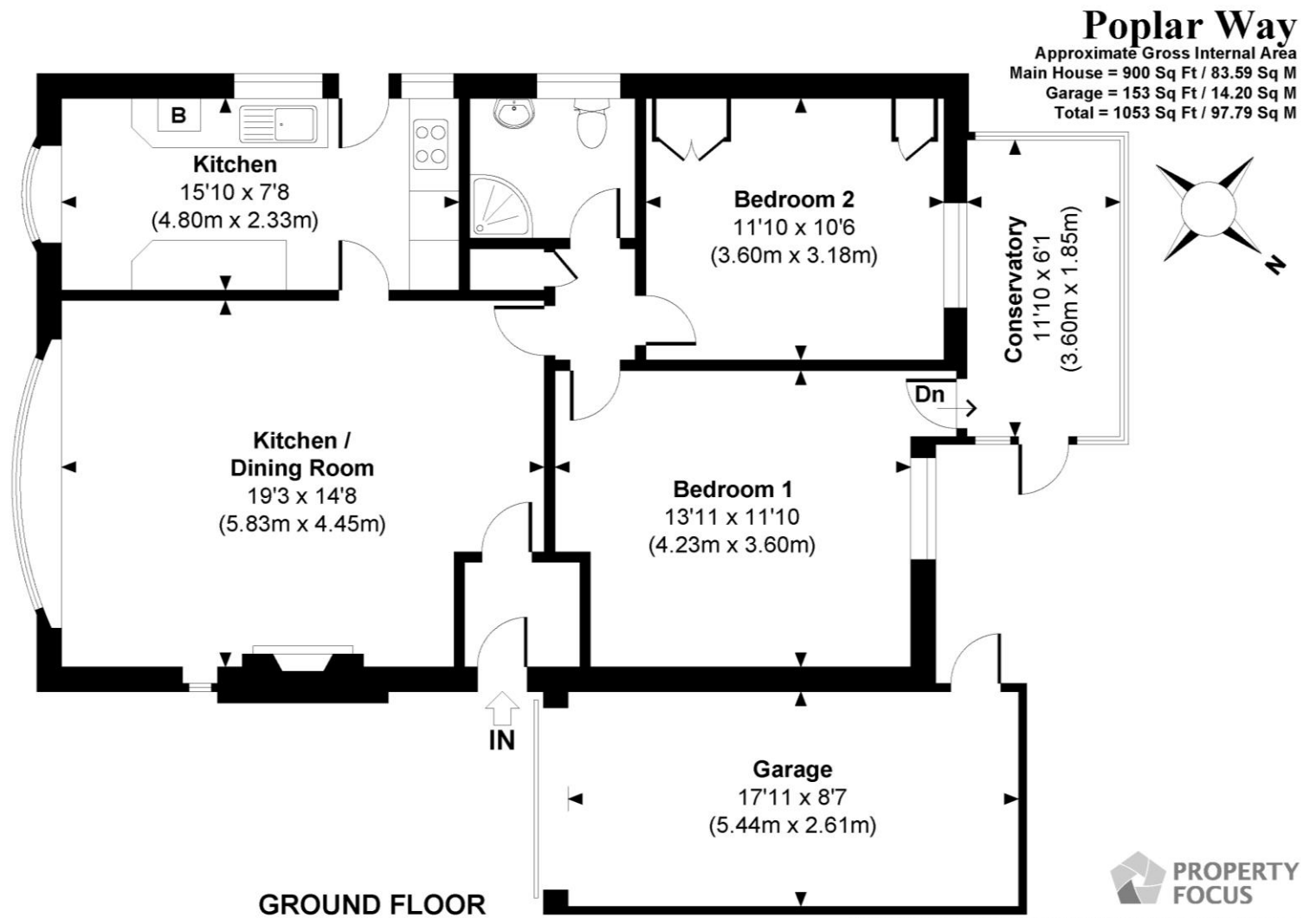
**As you approach the property there is driveway parking for numerous vehicles which leads to the single garage. The garden is well maintained and features a patio area, with the remainder laid to lawn.**



# Winkworth

Address: 14 Poplar Way, North Baddesley, SO52 9FW

Council Tax Band: "D"



[winkworth.co.uk/romsey](http://winkworth.co.uk/romsey)

## Winkworth Romsey

18 Market Place, Romsey, Hampshire, SO51 8NA  
01794 511911 | [romsey@winkworth.co.uk](mailto:romsey@winkworth.co.uk)

[winkworth.co.uk/romsey](http://winkworth.co.uk/romsey)

## Winkworth Winchester

2 Black Swan Buildings, Southgate Street,  
Winchester, Hampshire, SO23 9DT  
01962 866777 | [winchester@winkworth.co.uk](mailto:winchester@winkworth.co.uk)

## Winkworth Mayfair & Country House Department

11 Berkeley Street, Mayfair, London, W1J 8DS  
020 7871 0589 | [countryhouse@winkworth.co.uk](mailto:countryhouse@winkworth.co.uk)

# Winkworth

See things differently