



VERITY CLOSE, LONDON, W11  
**£1,995 PER MONTH FURNISHED**

Winkworth



## VERITY CLOSE, LONDON, W11

Modern One-Bedroom Apartment – High-Spec Finish,  
Prime Ladbroke Grove Location

Available August 2025 – Furnished

This beautifully modernised one-bedroom apartment is set on the first floor of a well-maintained purpose-built development and has been finished to a high standard throughout. The property features stylish hardwood flooring, a spacious reception room ideal for entertaining, a separate contemporary kitchen, and a sleek modern bathroom.

Perfect for professionals seeking comfort and convenience in one of West London's most sought-after neighbourhoods.

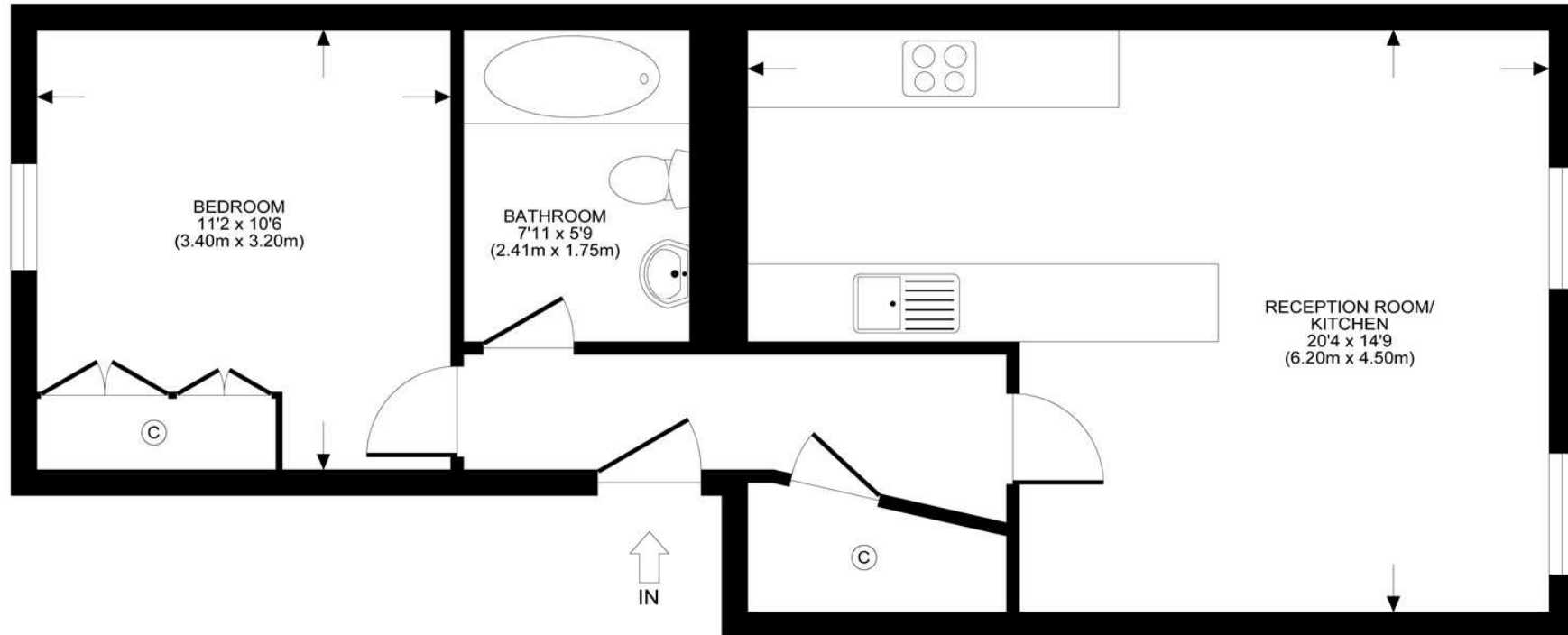
### LOCATION

Ideally located just moments from both Ladbroke Grove and Latimer Road stations, this apartment offers excellent transport links and easy access to the vibrant amenities of Notting Hill, Portobello Road, and Westfield London.









All measurements walls, doors, windows, fittings and their appliances, their size and location shown conventionally and are approximate only and cannot be regarded as being a representation either by the seller or his agent nor zentuvo  
[www.zentuvo.co.uk](http://www.zentuvo.co.uk)

Energy Efficiency Rating		
	Current	Potential
Very energy efficient - lower running costs		
(92-100) <b>A</b>		
(81-91) <b>B</b>		
(69-80) <b>C</b>	81	85
(55-68) <b>D</b>		
(39-54) <b>E</b>		
(21-38) <b>F</b>		
(1-20) <b>G</b>		
Not energy efficient - higher running costs		
England, Scotland & Wales		EU Directive 2002/91/EC

North Kensington | 020 7792 5000 | [northkensington@winkworth.co.uk](mailto:northkensington@winkworth.co.uk)