



**FERNDALE ROAD, N15**  
**£485,000 LEASEHOLD**

**DESCRIPTION:**

Nestled within a highly coveted residential street, this meticulously designed first-floor purpose built maisonette is a true treasure, showcasing expansive dimensions. The approximately 694 Sq Ft space has been thoughtfully crafted to seamlessly marry character and charm.

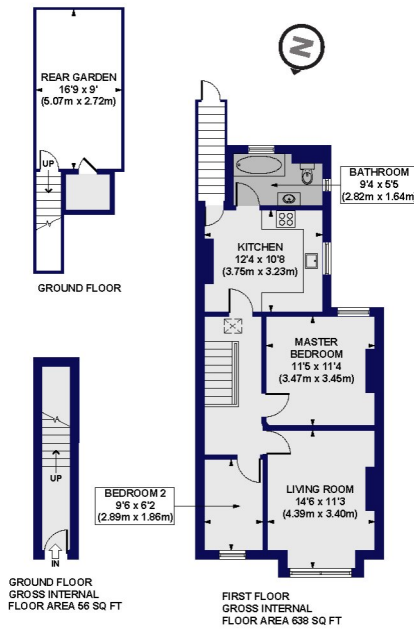
Harringay | 020 8800 5151 | harringay@winkworth.co.uk

**Winkworth**

for every step...

[winkworth.co.uk](http://winkworth.co.uk)

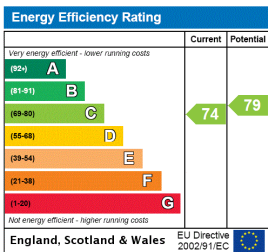
Ferndale Road, N15  
 Approx. Gross Internal Floor Area 694 sq. ft / 64.45 sq. m



All measurements of walls, doors, windows, fittings and appliances, including their size and location, are shown as standard sizes and do not constitute a warranty or representation by the vendor. Care should be taken as to the correct floor level and any other details shown on the floor plan. The floor plan is for illustration purposes only and is not to scale. It is intended for illustrative purposes only and is not to be used for any other purposes.



This floorplan is for illustration purposes only and is not to scale. The position and size of doors, windows, appliances and other features are approximate.



**Tenure:** Leasehold  
**Term:** Expires - 20/12/3019  
**Service Charge:** £0 per annum  
**Ground Rent:** £ 0 Annually (subject to increase)  
**Council Tax Band:**

Where no figures are shown, we have been unable to ascertain the information. All figures that are shown were correct at the time of printing.

Harringay | 020 8800 5151 | harringay@winkworth.co.uk



for every step...

winkworth.co.uk

Winkworth wishes to inform prospective buyers and tenants that these particulars are a guide and act as information only. All our details are given in good faith and believed to be correct at the time of printing but they don't form part of an offer or contract. No Winkworth employee has authority to make or give any representation or warranty in relation to this property. All fixtures and fittings, whether fitted or not are deemed removable by the vendor unless stated otherwise and room sizes are measured between internal wall surfaces, including furnishings.