



ELVERTON STREET, UK, SW1P

£900,000

LEASEHOLD

At a glance...

- Purpose Built Apartment
- 4th Floor with Lift
- c.840 Square Feet
- Parking Space
- Long Leasehold
- Council Tax Band: G

Winkworth

for every step...



Energy Efficiency Rating		
	Current	Potential
Very energy efficient - lower running costs		
(92+) A		
(81-91) B		
(69-80) C	76	77
(55-68) D		
(39-54) E		
(21-38) F		
(1-20) G		
Not energy efficient - higher running costs		
England, Scotland & Wales		EU Directive 2002/91/EC

ELVERTON STREET, UK, SW1P

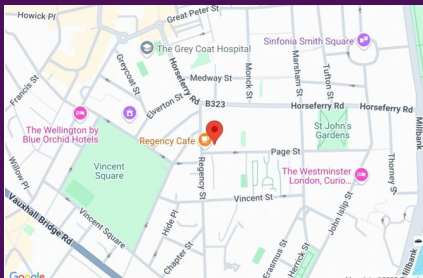
£900,000

LEASEHOLD

Positioned on the rear of this exclusive Westminster apartment building and on the 4th floor (with lift) this quiet flat has lovely views from the reception room and both bedrooms.

Covering some 840 sq ft the flat consists of a large entrance corridor, lovely, bright reception room large enough for ample dining and reception areas, separate modern kitchen, master bedroom with great storage and ensuite bathroom, second double room and family bathroom.

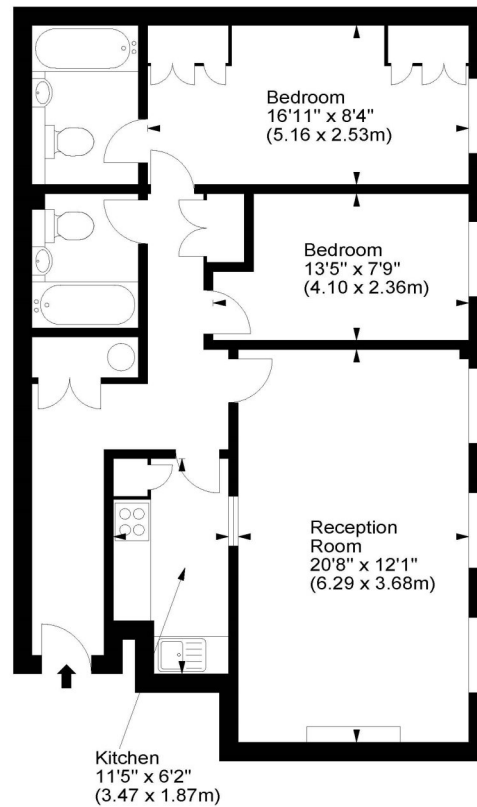
With a long lease, day porter and secure parking this flat would make an ideal London base or very comfortable Westminster home.



winkworth wishes to inform prospective buyers and tenants that these particulars are a guide and act as information only. All our details are given in good faith and believed to be correct at the time of printing but they don't form part of an offer or contract. No winkworth employee has authority to make or give any representation or warranty in relation to this property. All fixtures and fittings, whether fitted or not are deemed removable by the vendor unless stated otherwise and room sizes are measured between internal wall surfaces including fireplaces.

Royal Westminster Lodge, SW1

Approx. Gross Internal Area
840 Sq Ft - 78.04 Sq M



Fourth Floor

For illustration purposes only. Not to scale.
All measurements are taken and shown at floor level.
www.r3photography.co.uk © Photography / Floor Plans / Lease Plans / EPCs



Pimlico & Westminster

020 7828 1786

pimlico@winkworth.co.uk

winkworth.co.uk/pimlico-westminster

Winkworth

for every step...