



Bovill Road, SE23

£500,000 *Share of Freehold*

2  1  1 

Introducing this stunning Two bedroom period first floor flat boasting two double bedrooms, a spacious living area and a modern kitchen. Situated in a sought after location, this property offers convenience and style. Located within walking distance of local amenities, schools and transport links.

KEY FEATURES

-

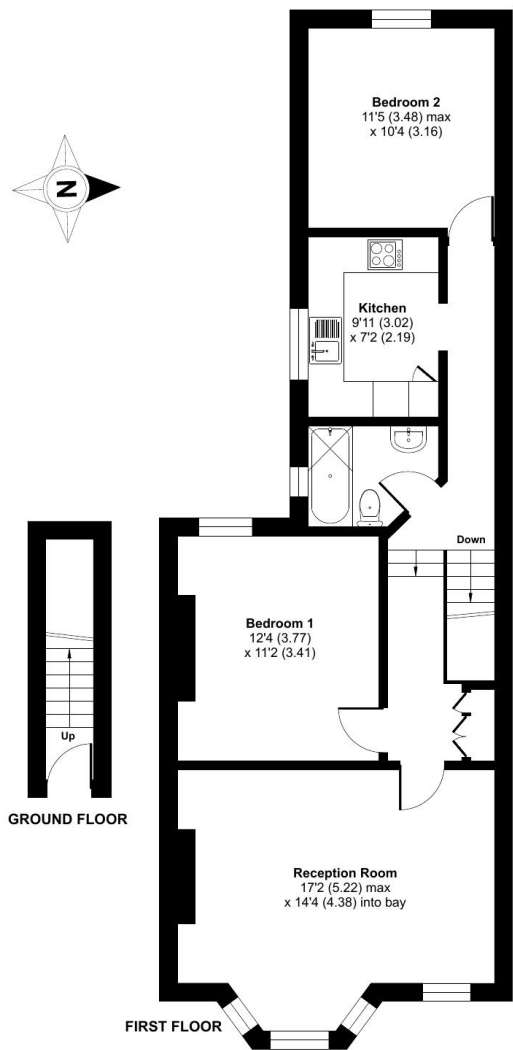


Forest Hill

| foresthill@winkworth.co.uk

Bovill Road, London, SE23

Approximate Area = 767 sq ft / 71.2 sq m
For identification only - Not to scale



Floor plan produced in accordance with RICS Property Measurement Standards incorporating International Property Measurement Standards (IPMS2 Residential). © nichecom 2025. Produced for Winkworth Forest Hill and New Cross. REF: 1381485

MATERIAL INFO

For more information, scan the QR code or visit the link below

Tenure: Share of Freehold



<https://www.winkworth.co.uk/sale/property/FHL250287>

Where no figures are shown, we have been unable to ascertain the information. All figures that are shown were correct at the time of printing.

Forest Hill

| foresthill@winkworth.co.uk

Winkworth wishes to inform prospective buyers and tenants that these particulars are a guide and act as information only. All our details are given in good faith and believed to be correct at the time of printing but they don't form part of an offer or contract. No Winkworth employee has authority to make or give any representation or warranty in relation to this property. All fixtures and fittings, whether fitted or not are deemed removable by the vendor unless stated otherwise and room sizes are measured between internal wall surfaces, including furnishings.