



## Eccleston Square, UK, SW1V

£3,100 PER MONTH

**FURNISHED**

### AT A GLANCE

- Two Bedrooms
- Large Open Plan Reception and Kitchen
- Access to Eccleston Square Gardens
- Close to Transport
- Council Tax Band: F

**Winkworth**

for every step...

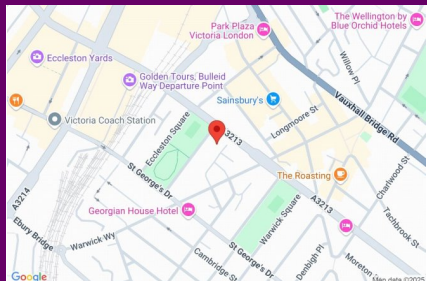


Energy Efficiency Rating		
	Current	Potential
Very energy efficient - lower running costs		
(92+) <b>A</b>		
(81-91) <b>B</b>		
(69-80) <b>C</b>		
(55-68) <b>D</b>		
(39-54) <b>E</b>		
(21-38) <b>F</b>		
(1-20) <b>G</b>		
Not energy efficient - higher running costs		
England, Scotland & Wales	EU Directive 2002/91/EC	

## ECCLESTON SQUARE, UK, SW1V

£3,100 PER MONTH  
FURNISHED

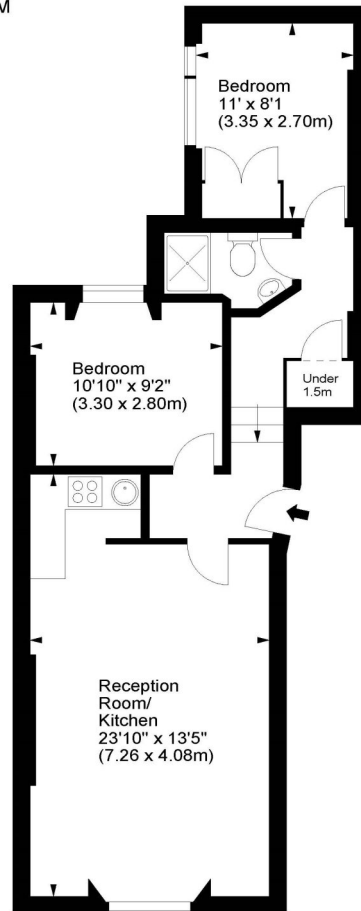
A fantastic two double bedroom Raised Ground floor apartment situated in the most convenient position overlooking the prestigious gardens of Eccleston Square to which there is access. The apartment offers excellent access to Victoria Station for rail, bus and underground transport which are only minutes away. Amenities can be found in close proximity at Wilton Road, Warwick Way, Elizabeth Street, and is only a short distance from Sloane Squares up market restaurants and boutiques.



winkworth wishes to inform prospective buyers and tenants that these particulars are a guide and act as information only. All our details are given in good faith and believed to be correct at the time of printing but they don't form part of an offer or contract. No winkworth employee has authority to make or give any representation or warranty in relation to this property. All fixtures and fittings, whether fitted or not are deemed removable by the vendor unless stated otherwise and room sizes are measured between internal wall surfaces - including fire-chimneys.

### Eccleston Square, SW1

Approx. Gross Internal Area  
628 Sq Ft - 58.34 Sq M



Raised Ground Floor

For illustration purposes only. Not to scale.  
All measurements are taken and shown at floor level.  
www.r3photography.co.uk © Photography / Floor Plans / Lease Plans / EPCs



Pimlico & Westminster | 020 7828 1786 |  
pimlico@winkworth.co.uk

winkworth.co.uk/pimlico

# Winkworth

for every step...