



## Morpeth Terrace, UK, SW1P

£2,700 PER MONTH

FURNISHED

### AT A GLANCE

- Heating and Hot Water Included
- Large Reception Room
- Spacious Double Bedroom
- Porter
- Council Tax Band: D

**Winkworth**

for every step...

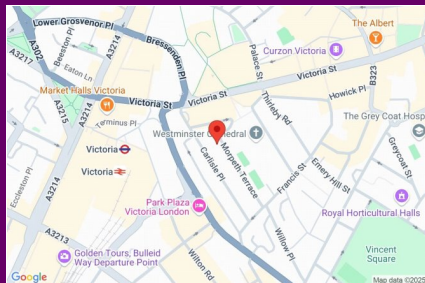


Score	Energy rating	Current	Potential
92+	A		
81-91	B		
69-80	C	72 C	81 B
55-68	D		
39-54	E		
21-38	F		
1-20	G		

## MORPETH TERRACE, UK, SW1P

£2,700 PER MONTH  
FURNISHED

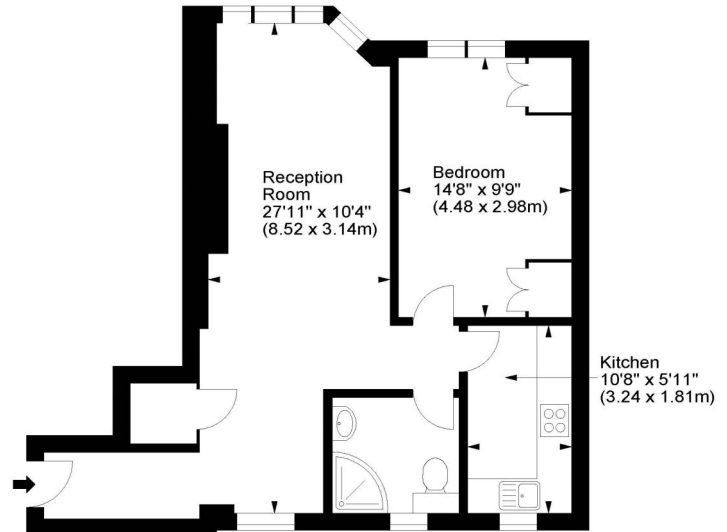
**\*RENT INCLUDES HEATING\*** A spacious and well presented, one double bedroom apartment located on the third floor of this desirable mansion block in Westminster (with lift). Ashley Court is well placed for the amenities of Victoria Street and Cardinal Place, while the wide variety of transport links at Victoria are a short distance away.



winkworth wishes to inform prospective buyers and tenants that these particulars are a guide and act as information only. All our details are given in good faith and believed to be correct at the time of printing but they don't form part of an offer or contract. No winkworth employee has authority to make or give any representation or warranty in relation to this property. All fixtures and fittings, whether fitted or not are deemed removable by the vendor unless stated otherwise and room sizes are measured between internal wall surfaces, including fireplaces.

## Ashley Court, SW1

Approx. Gross Internal Area  
598 Sq Ft - 55.55 Sq M



Third Floor

For illustration purposes only. Not to scale.  
All measurements are taken and shown at floor level.  
www.r3photography.co.uk © Photography / Floor Plans / Lease Plans / EPCs



Pimlico & Westminster | 020 7828 1786 |  
pimlico@winkworth.co.uk

winkworth.co.uk/pimlico

# Winkworth

for every step...